



Overton Drive
Wanstead, London, E11 2NJ
Offers In Excess Of £2,000,000



MADISON BROOK
INTERNATIONAL

Overton Drive, Wanstead, London, E11 2NJ

****OPEN HOUSE SATURDAY 27TH JULY****

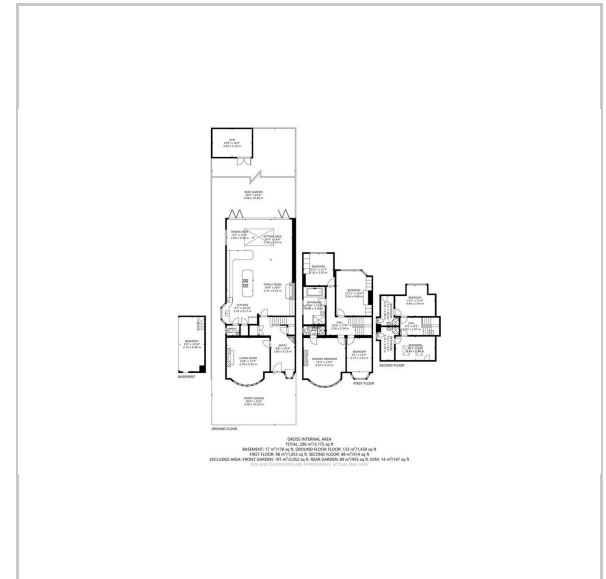
This spectacular, 6 bedroom, semi-detached period house is located in the heart of Wanstead and boasts tranquil, picturesque views out to the Wanstead Golf Course.

Spanning over 3,175 Sq Ft of internal living space, this exceptional house is situated over three floors, the ground floor offering a stunning open plan living, dining and kitchen area, which leads onto the sizable rear garden, then a second, separate living area with large bay windows allowing lots of natural light throughout. The first floor comprises four sizable bedrooms, with the principle room benefiting from a en-suite and then a further, stylish family bathroom. Lastly, on the second floor you have a two further double bedrooms both offering well maintained en-suites. Additionally, the house has an onsite gym, and off street parking.

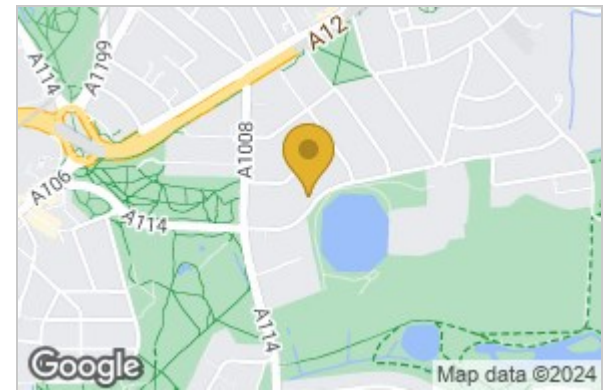
Overton Drive is located in a very sought-after neighbourhood where you can expect many local amenities, outstanding schools, transport links and the beautiful green spaces of Wanstead Park.



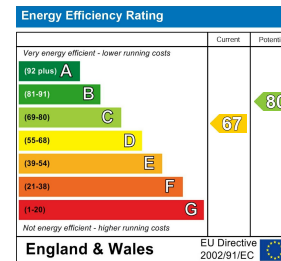
Floor Plan



Area Map



Energy Efficiency Graph



These particulars, whilst believed to be accurate are set out as a general outline only for guidance and do not constitute any part of an offer or contract. Intending purchasers should not rely on them as statements of representation of fact, but must satisfy themselves by inspection or otherwise as to their accuracy. No person in this firm's employment has the authority to make or give any representation or warranty in respect of the property.

20 Western Gateway, Royal Victoria Dock, London, E16 1BS

Tel: 020 3946 6000 Email: docklands@madisonbrook.com <https://madisonbrook.com/>