



## Heron Place

4 Bramwell Way, Silvertown, E16 2FJ

£1,650 PCM



**MADISON BROOK**  
INTERNATIONAL

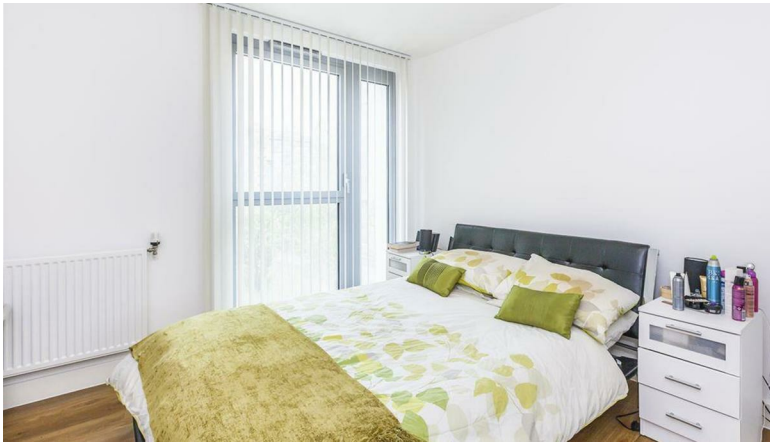


# Heron Place, 4 Bramwell Way, Silvertown, E16 2FJ

Modern, bright and set in a newly built and highly sought-after development near the Thames, this superb one bedroom apartment boasts a private balcony and use of the communal gymnasium.

The property comprises light and well proportioned reception room, stylish and well equipped kitchen, Double bedroom with storage, bathroom and a private balcony with side views towards the Thames and O2 arena.

Waterside Park is perfect for gentle river walks and swift access into vibrant Canary Wharf, where there is an excellent selection of shops, bars and dock-side attractions. Local transport links include Pontoon Dock (DLR), Canning Town (Jubilee Line) in a walkable distance.



These particulars, whilst believed to be accurate are set out as a general outline only for guidance and do not constitute any part of an offer or contract. Intending purchasers should not rely on them as statements of representation of fact, but must satisfy themselves by inspection or otherwise as to their accuracy. No person in this firm's employment has the authority to make or give any representation or warranty in respect of the property.

20 Western Gateway, Royal Victoria Dock, London, E16 1BS  
 Tel: 020 3946 6000 Email: docklands@madisonbrook.com <https://madisonbrook.com/>

## Floor Plan



## Area Map



## Energy Efficiency Graph

