



Western Gateway

Royal Victoria Dock, London, E16 1BQ

Price Guide £650,000



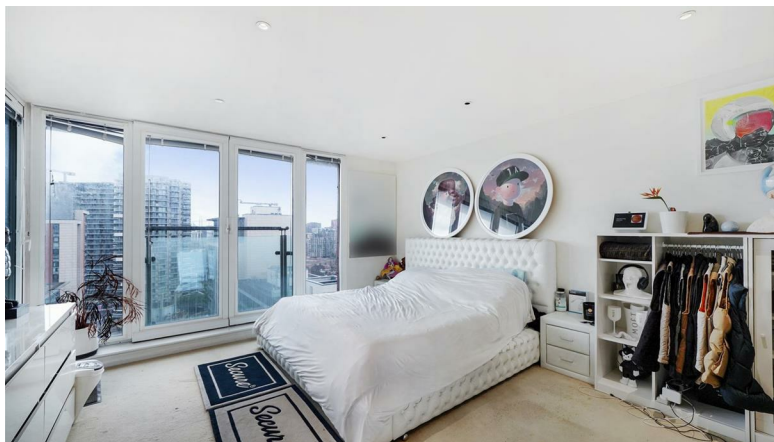
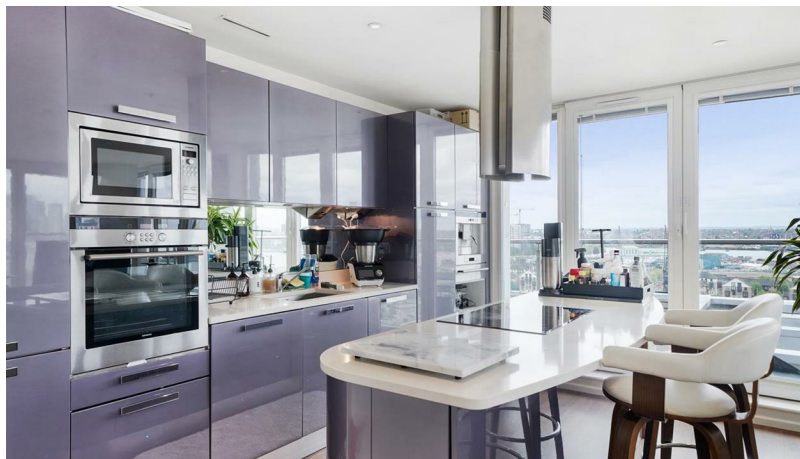
MADISON BROOK
INTERNATIONAL

Western Gateway, Royal Victoria Dock, London, E16 1BQ

Located on the 14th floor of this luxury waterside development is this amazing two bedroom penthouse apartment boasting top-specification living with approx. 1,173 sq. ft. of internal space with views over the City.

The property comprises an interior designed living room with stunning Italian open-plan kitchen, fully fitted with appliances (including coffee machine), master bedroom and en-suite shower room and access to side balcony, second bedroom, stylish marble master bathroom with integrated mood lighting, under floor heating and stunning views over London.

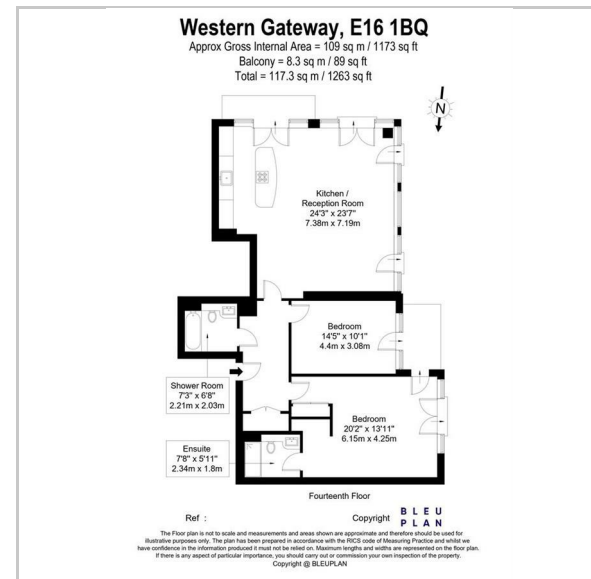
The Oxygen is perfectly situated for the many attractions and transport links of surrounding Royal Victoria Docks, including the award winning local restaurants, bars and water sports facility. Local transport links include Royal Victoria (DLR), Custom House (DLR) and Canning Town (DLR and Jubilee Line).



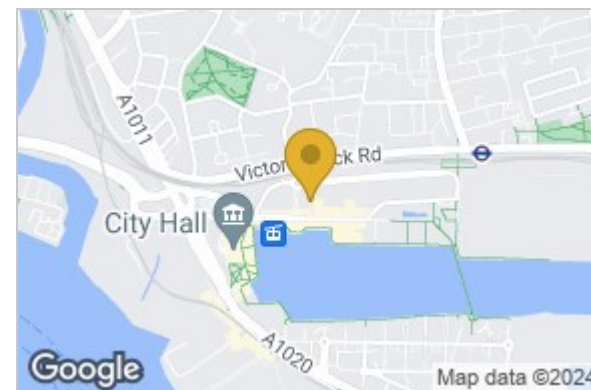
These particulars, whilst believed to be accurate are set out as a general outline only for guidance and do not constitute any part of an offer or contract. Intending purchasers should not rely on them as statements of representation of fact, but must satisfy themselves by inspection or otherwise as to their accuracy. No person in this firm's employment has the authority to make or give any representation or warranty in respect of the property.

20 Western Gateway, Royal Victoria Dock, London, E16 1BS
 Tel: 020 3946 6000 Email: docklands@madisonbrook.com <https://madisonbrook.com/>

Floor Plan



Area Map



Energy Efficiency Graph

