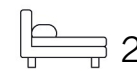




Living
made
better

Defoe House
London City Island, E14 0TX



Offers In Excess Of £650,000

Defoe House, London City Island E14 0TX

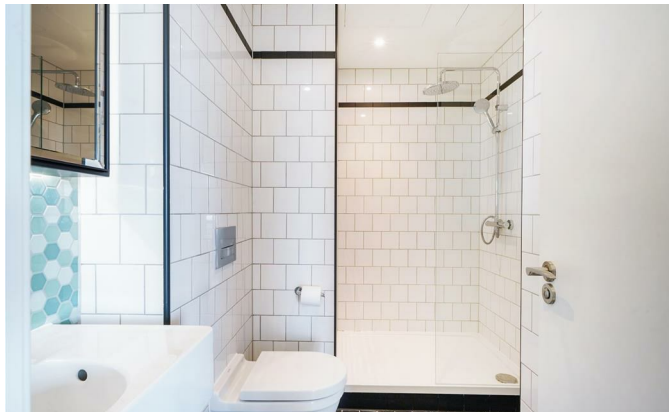
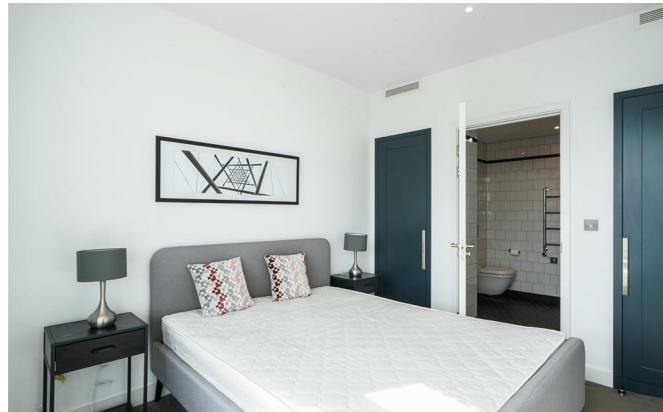
Madison Brook

This beautifully presented brand new two bedroom apartment boasts 844 sq. ft. of internal living space & is located on the 17th floor with a balcony with North - Easterly views across The City, Canning Town and the River Lea which surrounds the Leamouth Peninsula.

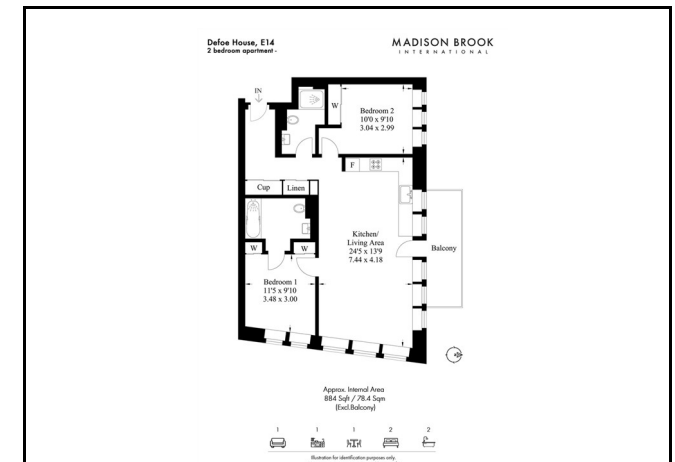
This Designed with a warehouse aesthetic, generous open plan living spaces and loft style features, City Island's apartments offer timeless quality with an urban edge.

All of the Island's residents are members of the exclusive City Island Art's Club. With membership comes access to a range of elegantly designed private facilities - there's a clubhouse, concierge, grocer's shop, gymnasium, spa & treatment rooms, a screening room, pools and communal gardens.

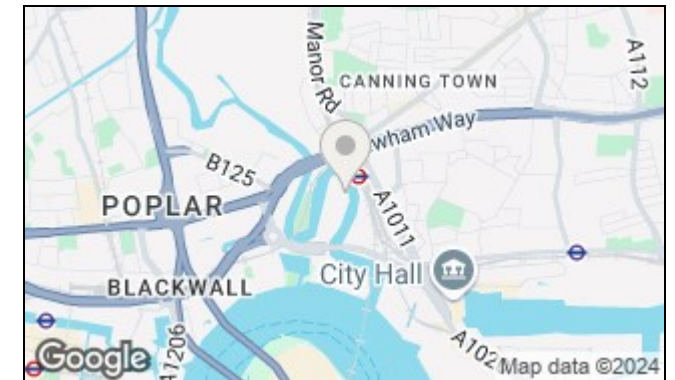
Located within walking distance to Canning Town (Jubilee) & East India (DLR) stations.



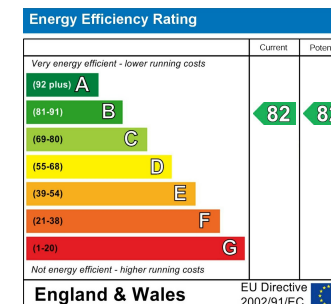
Floorplan



Area Map



Energy Efficiency Graph



These particulars, whilst believed to be accurate are set out as a general outline only for guidance and do not constitute any part of an offer or contract. Intending purchasers should not rely on them as statements of representation of fact, but must satisfy themselves by inspection or otherwise as to their accuracy. No person in this firm's employment has the authority to make or give any representation or warranty in respect of the property.

20 Western Gateway, Royal Victoria Dock, London, E16 1BS

Tel: 020 3946 6000 Email: docklands@madisonbrook.com <https://madisonbrook.com/>