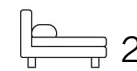




Living  
made  
better

Admiralty Avenue  
London, E16 2SJ



Offers In Excess Of £605,000

# Admiralty Avenue, London E16 2SJ

Madison Brook

A stunning two bedroom, two bathroom apartment, located directly overlooking the River Thames from the private balcony and benefits from a secure, gated parking space.

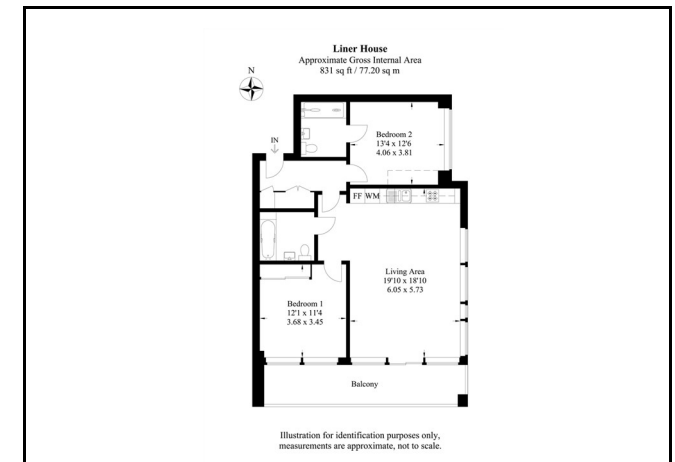
The property comprises over 831 sq. ft. of internal living space, along with a further 159 sq. ft. of terrace space, with two evenly sized double bedrooms, a large open-plan lounge & fitted kitchen, family bathroom plus additional en-suite & storage space.

Royal Wharf is one of the largest redevelopments in East London and boasts a sports & fitness centre, swimming pool, resident's concierge, a development central square which will boast a coffee shop, convenience store and several restaurants.

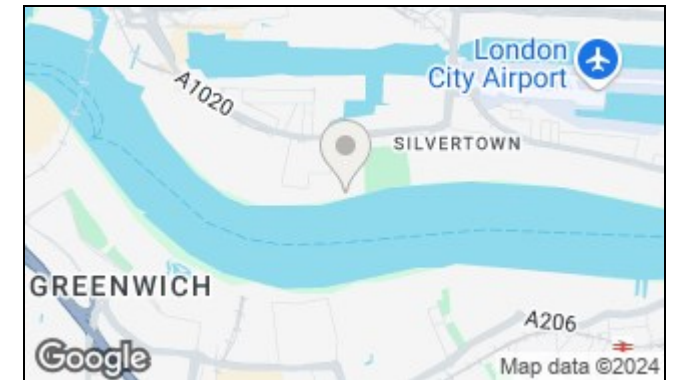
Liner House is just minute's walk to Pontoon Dock (DLR) and is equidistant to Canning Town (Jubilee).



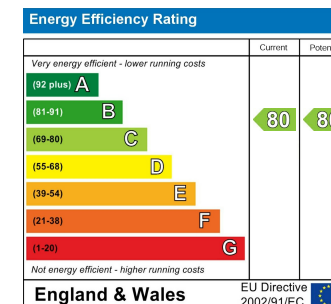
## Floorplan



## Area Map



## Energy Efficiency Graph



These particulars, whilst believed to be accurate are set out as a general outline only for guidance and do not constitute any part of an offer or contract. Intending purchasers should not rely on them as statements of representation of fact, but must satisfy themselves by inspection or otherwise as to their accuracy. No person in this firm's employment has the authority to make or give any representation or warranty in respect of the property.

20 Western Gateway, Royal Victoria Dock, London, E16 1BS

Tel: 020 3946 6000 Email: [docklands@madisonbrook.com](mailto:docklands@madisonbrook.com) <https://madisonbrook.com/>