



## The Oxygen Apartments

18 Western Gateway, Royal Victoria Dock, E16 1BQ

Asking Price £500,000



**MADISON BROOK**  
INTERNATIONAL

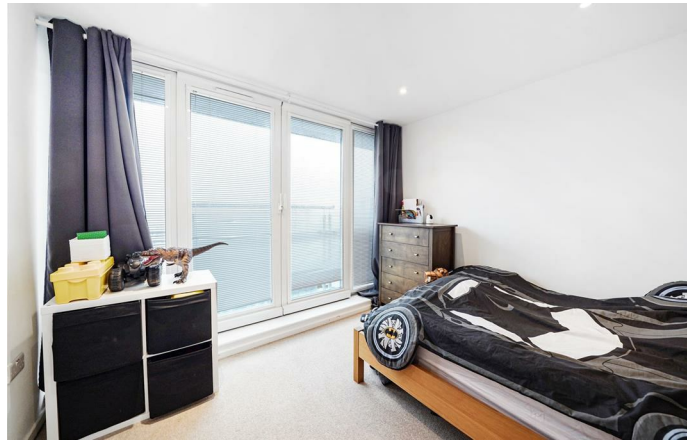
# The Oxygen Apartments, 18 Western Gateway, Royal Victoria Dock, E16 1BQ

A stunning two-bedroom flat set in a superb modern development, offering a reception room bathed in natural light and Juliet balconies throughout.

The property comprises an open-plan living and kitchen area with modern, integrated appliances, a stylish island, and two double bedrooms, with the principal benefiting from a well-maintained en-suite and a further three-piece family bathroom. Additionally, the property has ample storage and underfloor heating throughout.

The Oxygen Apartments is set within the desirable Excel complex and benefits from a selection of local amenities, while Canary Wharf is only a short distance away. The development also has an on-site concierge.

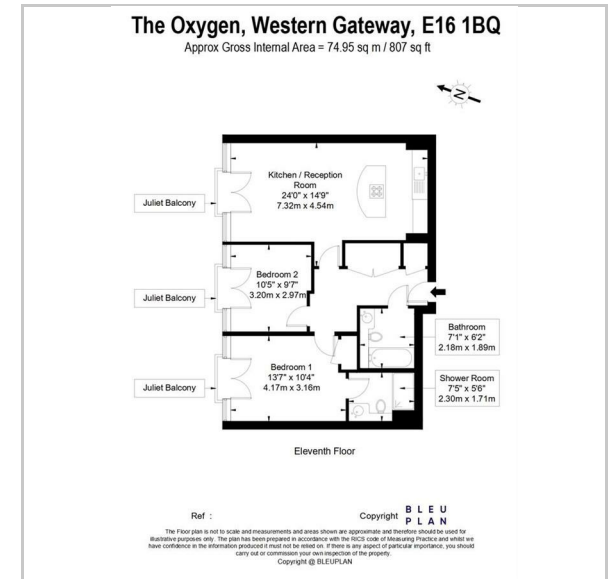
Local transport links include Royal Victoria Dock DLR and the Elizabeth Line, allowing easy access to The City Of London and beyond.



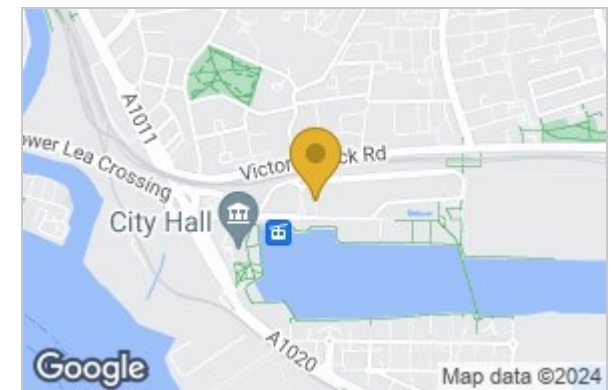
These particulars, whilst believed to be accurate are set out as a general outline only for guidance and do not constitute any part of an offer or contract. Intending purchasers should not rely on them as statements of representation of fact, but must satisfy themselves by inspection or otherwise as to their accuracy. No person in this firm's employment has the authority to make or give any representation or warranty in respect of the property.

20 Western Gateway, Royal Victoria Dock, London, E16 1BS  
 Tel: 020 3946 6000 Email: docklands@madisonbrook.com <https://madisonbrook.com/>

## Floor Plan



## Area Map



## Energy Efficiency Graph

