



Silvertown, London, E16 2PF
Guide Price £1,000,000



MADISON BROOK
INTERNATIONAL

, Silvertown, London, E16 2PF

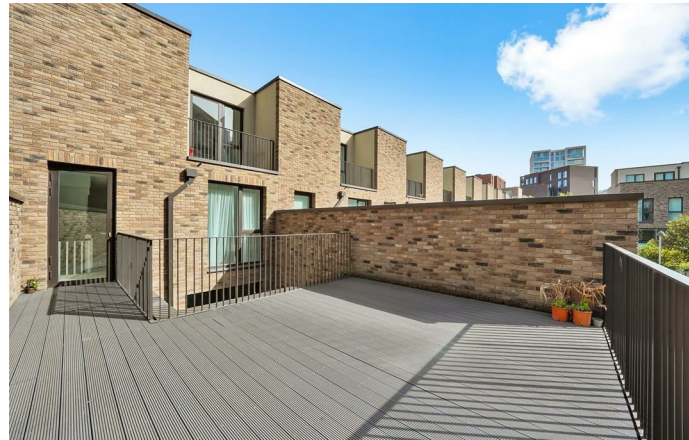
****GUIDE PRICE £1,000,000-£1,250,000****

This stunning four bedroom townhouse with generous living space is set over three floors and located in the Royal Wharf development boasting a beautiful finish throughout.

Comprising a substantial kitchen/dining area over 30ft leading out on to an internal courtyard, three double bedrooms, two bathrooms, a spacious lounge area and separate back garden. On the first floor you have two of the double bedrooms, master bathroom and access to a private 400 sq. ft. terrace.

The top floor consists of a master bedroom with chic en suite shower room as well as a separate room which could be used as either a further bedroom or an office.

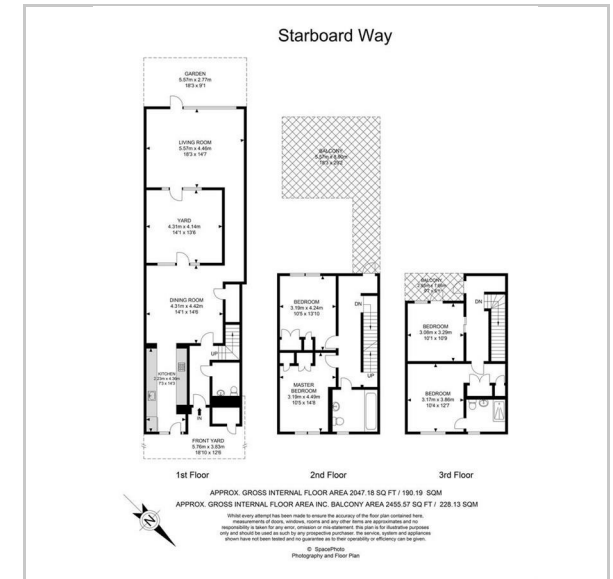
The River Thames is located just yards from the property and is visible from some of the balconies. The property is located close to Pontoon Dock (DLR) and offers quick access to both Bank and Canary Wharf.



These particulars, whilst believed to be accurate are set out as a general outline only for guidance and do not constitute any part of an offer or contract. Intending purchasers should not rely on them as statements of representation of fact, but must satisfy themselves by inspection or otherwise as to their accuracy. No person in this firm's employment has the authority to make or give any representation or warranty in respect of the property.

20 Western Gateway, Royal Victoria Dock, London, E16 1BS
 Tel: 020 3946 6000 Email: docklands@madisonbrook.com <https://madisonbrook.com/>

Floor Plan



Area Map



Energy Efficiency Graph

