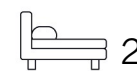




Living
made
better

Mercury House
Canning Town, E16 1FF



2



2



1



B

Offers In Excess Of £425,000

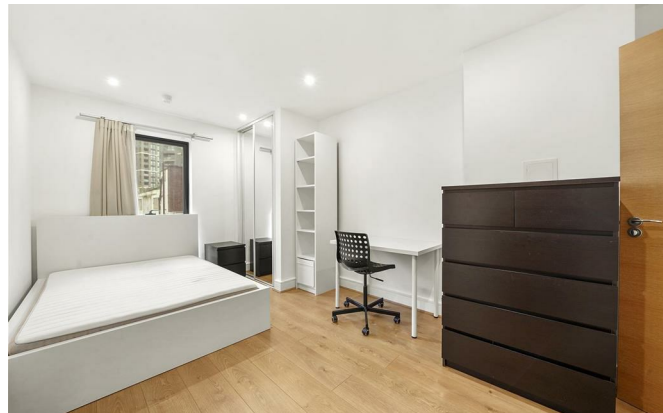
Mercury House, Canning Town E16 1FF

This spacious two bedroom, two bathroom property is situated in a private development in Canning Town.

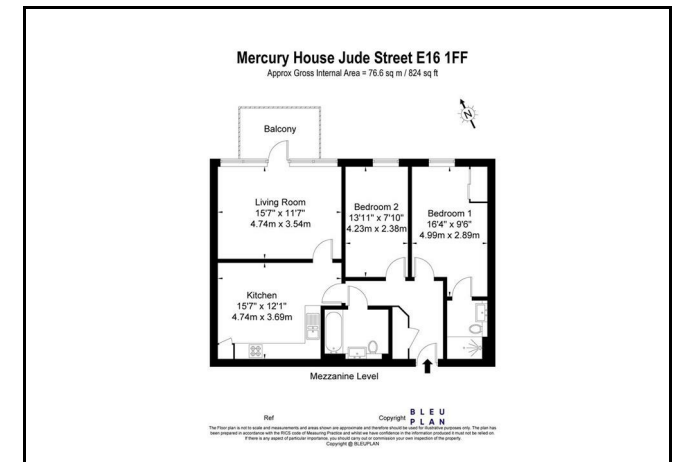
Spaciously arranged over the first mezzanine floor and boasting two double bedrooms, impressive storage space, tasteful integrated appliances, wood flooring and a sizable balcony. This apartment is a gem in the heart of Canning Town.

Mercury House is perfectly placed for use of the many attractions that can be found in and around Canning Town and the Royal Docks including local bars, restaurants, the Excel Centre and, while Canary Wharf is within easy reach.

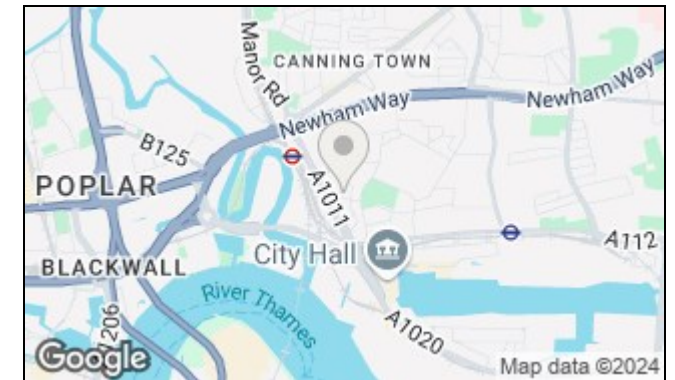
Local transport links include Canning Town (Jubilee) & Royal Victoria (DLR) and a selection of useful A roads for access.



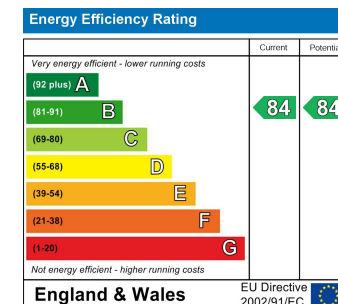
Floorplan



Area Map



Energy Efficiency Graph



These particulars, whilst believed to be accurate are set out as a general outline only for guidance and do not constitute any part of an offer or contract. Intending purchasers should not rely on them as statements of representation of fact, but must satisfy themselves by inspection or otherwise as to their accuracy. No person in this firm's employment has the authority to make or give any representation or warranty in respect of the property.

20 Western Gateway, Royal Victoria Dock, London, E16 1BS

Tel: 020 3946 6000 Email: docklands@madisonbrook.com <https://madisonbrook.com/>