



41 Millharbour
Canary Wharf, London, E14 9NE
Asking Price £750,000



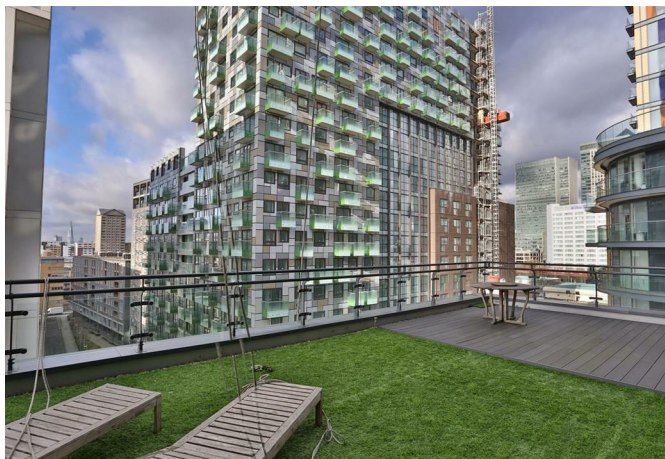
MADISON BROOK
INTERNATIONAL

41 Millharbour, Canary Wharf, London, E14 9NE

Stunning two bedroom contemporary apartment, with private roof terrace located within the Millharbour development at South Quay.

The accommodation comprises of a modern kitchen with integrated appliances, lovely master suite with en suite shower room, good-sized second bedroom, walk-in wardrobe, stylish bathroom and a private 650 Sq. Ft. roof terrace. The property offers stylish spacious living within easy commute to the Canary Wharf Estate.

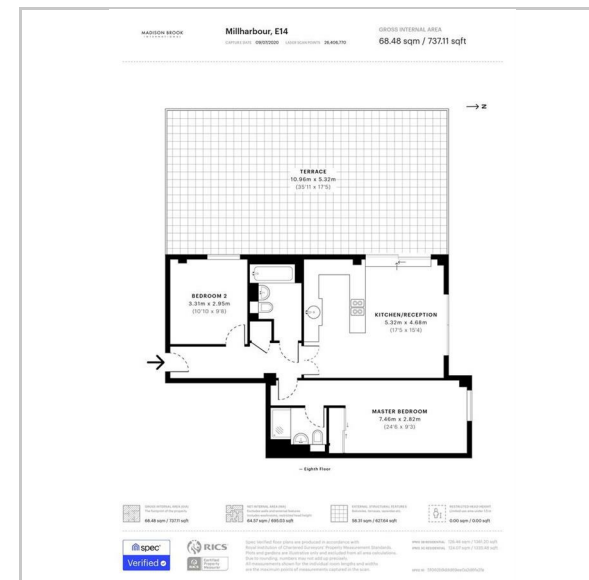
Millharbour offers a convenient water-side location moments from the vibrant shops and bars of Canary Wharf. Transport links include nearby South Quay station (DLR) and Canary Wharf (DLR and Jubilee Line).



These particulars, whilst believed to be accurate are set out as a general outline only for guidance and do not constitute any part of an offer or contract. Intending purchasers should not rely on them as statements of representation of fact, but must satisfy themselves by inspection or otherwise as to their accuracy. No person in this firm's employment has the authority to make or give any representation or warranty in respect of the property.

20 Western Gateway, Royal Victoria Dock, London, E16 1BS
 Tel: 020 3946 6000 Email: docklands@madisonbrook.com <https://madisonbrook.com/>

Floor Plan



Area Map



Energy Efficiency Graph

