



Love Lane, Great Wyrley, WS6 6NN

Offers in the Region Of £475,000

Welcome to Love Lane, one of the area's most desirable roads and this impressive, family home offering four double bedrooms with an en-suite to the main bedroom on the first floor.

This deceptively spacious and versatile property is set behind a secluded front driveway and comprises of an entrance hallway leading to three double bedrooms and a bathroom on the ground floor, a cosy front living room with bay window and a log burner, a spacious dining room with a log burner opening into the fabulous conservatory offering a calm relaxing place to take in the views over the rear garden.

The recently refitted, stylish kitchen with quartz worktops has been cleverly designed to maximize space and offers a luxurious area for families to spend time together. A breakfast bar provides a seating area and bi-fold doors open out to the patio area making this the perfect place for hosting and entertaining. Completing the ground floor layout is a home office and a garage with a WC.

Stairs from the dining area lead to a first floor master bedroom suite with a generous bedroom area, fitted wardrobes and an en-suite shower room.

This fabulous family home offers so much for families of all ages and is located in a highly sought after area close to the village amenities, a choice of reputable schools, dog walks a plenty and for commuters the M6 Toll Road and M54 Motorway are nearby.

The popular McArthurGlen Designer Outlet is less than a 10 minute drive and Chasewater Park is a stones throw away.

Call Paul Carr Great Wyrley for further information and to arrange an appointment to view.



Porch

Hallway

Living Room
3.63m (11'11") x 3.29m (10'10")

Bedroom 2
3.63m (11'11") x 3.08m (10'1")

Bedroom 3
3.08m (10'1") x 3.06m (10')

Bedroom 4
3.29m (10'10") x 3.06m (10')

Ground Floor Family Bathroom

Dining Room
5.95m (19'6") x 3.11m (10'2")

Kitchen
4.51m (14'9") x 3.66m (12')

Conservatory
5.74m (18'10") x 3.45m (11'4")

Office
3.66m (12') x 1.93m (6'4")

Garage

WC

First Floor Landing

Bedroom 1 5.41m (17'9") x 4.91m (16'1")

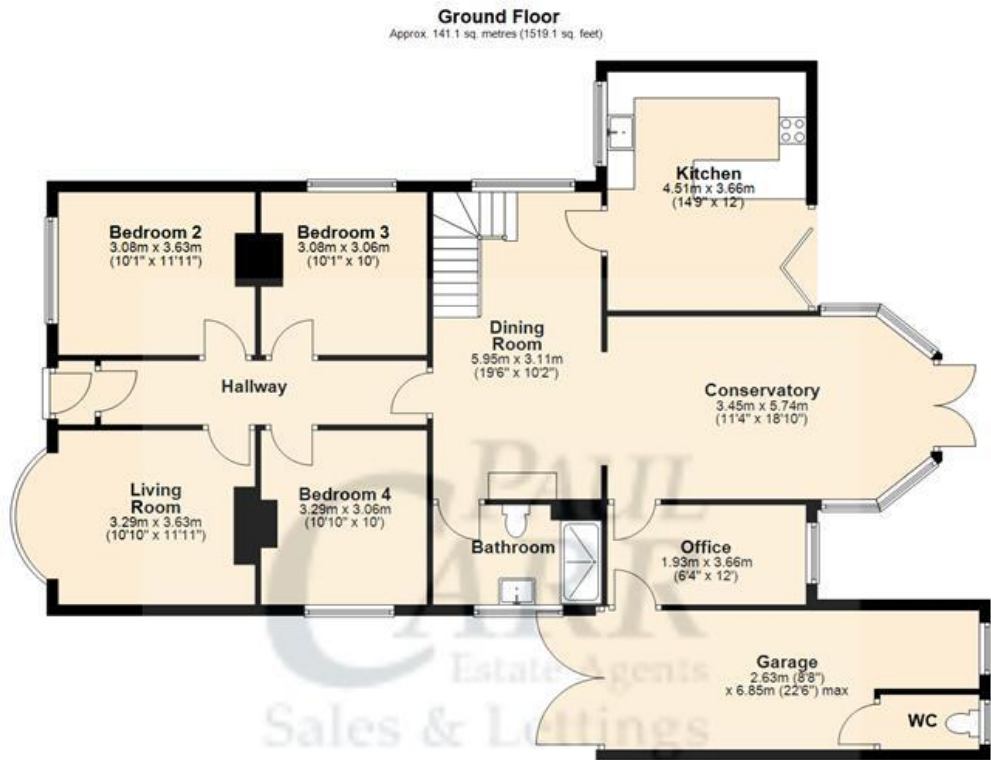
Bathroom





Floor Plan

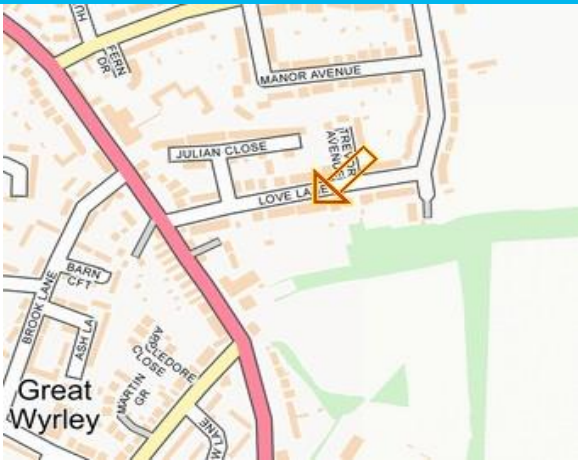
This floor plan is not drawn to scale and is for illustration purposes only

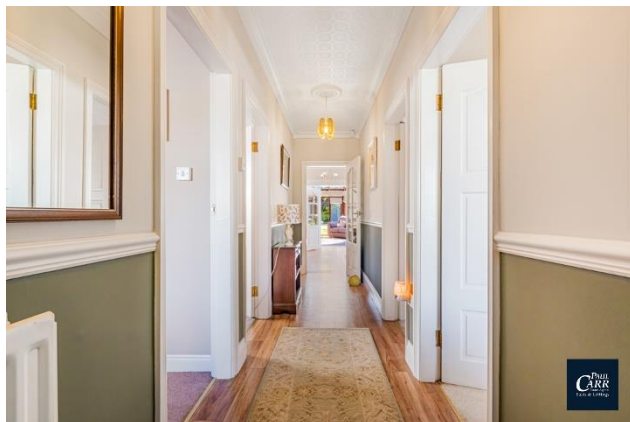


Energy Performance Rating

Score	Energy rating	Current	Potential
92+	A		
81-91	B		
69-80	C	69 C	80 C
55-68	D		
39-54	E		
21-38	F		
1-20	G		

Map Location







Agent's Note:

Every care has been taken with the preparation of these Sales Particulars but they are for general guidance only and complete accuracy cannot be guaranteed. If there is any point which is of particular importance, professional verification should be sought. The mention of any fixtures, fittings and/or appliances does not imply they are in full efficient working order as they have not been tested. All dimensions are approximate. Photographs are reproduced for general information and it cannot be inferred that any item shown is included in the sale. These Sales Particulars do not constitute a contract or part of a contract.
Came on the market: 12th July 2025