



Gorse Lane, Great Wyrley, WS6 6HJ

£325,000

Great Wyrley

£325,000



Paul Carr Estate Agents are delighted to market this detached bungalow set on a large corner plot offering excellent potential for extension and ideal for those looking to park large vehicles off road. The large plot provides privacy and lovely views from all rooms. Internally the property comprises of an entrance hallway leading to three bedrooms and a refitted shower room. The good sized lounge overlooks the rear garden and leads into the extended kitchen area with a sitting room/dining room and doors into the garden. The low maintenance garden has a gate accessing the driveway and detached single garage at the rear. This superb property is available to view via Paul Carr Great Wyrley and is offered with NO ONWARD CHAIN!





Property Specification

Extended Detached Bungalow
Generous Corner Plot
Detached Garage & Driveway
Three Bedrooms
Refitted Shower Room

Kitchen 2.58m (8'6") x 2.40m (7'10")

Dining Area 2.87m (9'5") x 2.48m (8'2")

Living Room 6.21m (20'5") x 3.13m (10'3") max

Bedroom 1 8' 10" x 13' 2" (4.75m x 4.01m)

Bedroom 2 3.20m (10'6") x 2.94m (9'8")

Bedroom 3 2.11m (6'11") x 1.92m (6'4")

Agent's Note:

Every care has been taken with the preparation of these Sales Particulars but they are for general guidance only and complete accuracy cannot be guaranteed. If there is any point which is of particular importance, professional verification should be sought. The mention of any fixtures, fittings and/or appliances does not imply they are in full efficient working order as they have not been tested. All dimensions are approximate. Photographs are reproduced for general information and it cannot be inferred that any item shown is included in the sale. These Sales Particulars do not constitute a contract or part of a contract.
Came on the market: 21st May 2024

Viewer's Note:

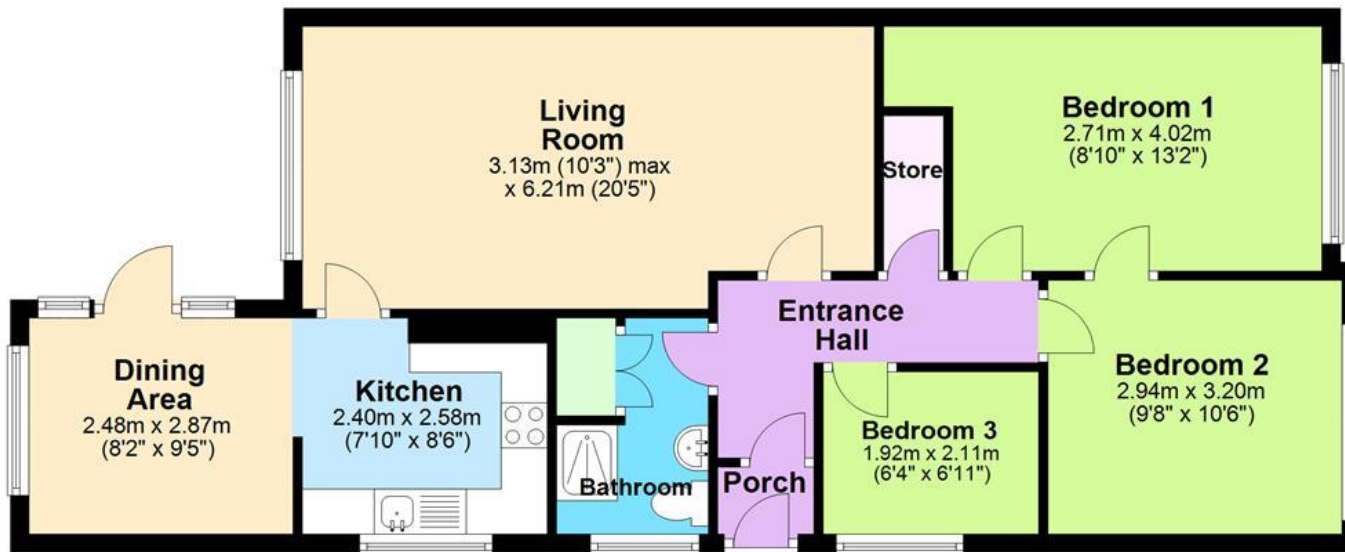
Services connected:
Council tax band: C
Tenure: Freehold

Floor Plan

This floor plan is not drawn to scale and is for illustration purposes only

Energy Efficiency Rating

Ground Floor



Map Location