



Knipersley Road,
Sutton Coldfield, B73 5JT

Offers in Excess of £360,000

Offers in Excess of £360,000



Occupying a fabulous corner plot with a beautiful mature rear garden this traditional three bed semi-detached property offers accommodation including separate reception room, a breakfast kitchen and side utility with wc.

Set within close proximity to the shopping centres of Wylde Green and Boldmere there is access to a superior local transport network both road and rail, shops and schools.

Outside a driveway provides off road parking and access to the detached garage whilst secure gates lead to the generous garden.





Property Specification

SUPERBLY LOCATED TRADITIONAL SEMI
THREE BEDROOMS
FABULOUS MATURE CORNER PLOT GARDEN
SEPARATE LOUNGE AND DINING ROOM
BREAKFAST KITCHEN

Porch

Hall

Dining Room 4.37m (14'4") x 3.95m (12'11")

Lounge 4.44m (14'7") max x 3.95m (12'11")

Kitchen 3.65m (12') x 2.10m (6'11")

Utility 2.00m (6'7") x 1.75m (5'9")

WC

Landing

Bedroom 1 4.62m (15'2") x 3.95m (12'11")

Bedroom 2 4.52m (14'10") x 3.37m (11'1")

Bedroom 3 2.68m (8'10") x 2.15m (7'1")

Bathroom

WC

Agent's Note:

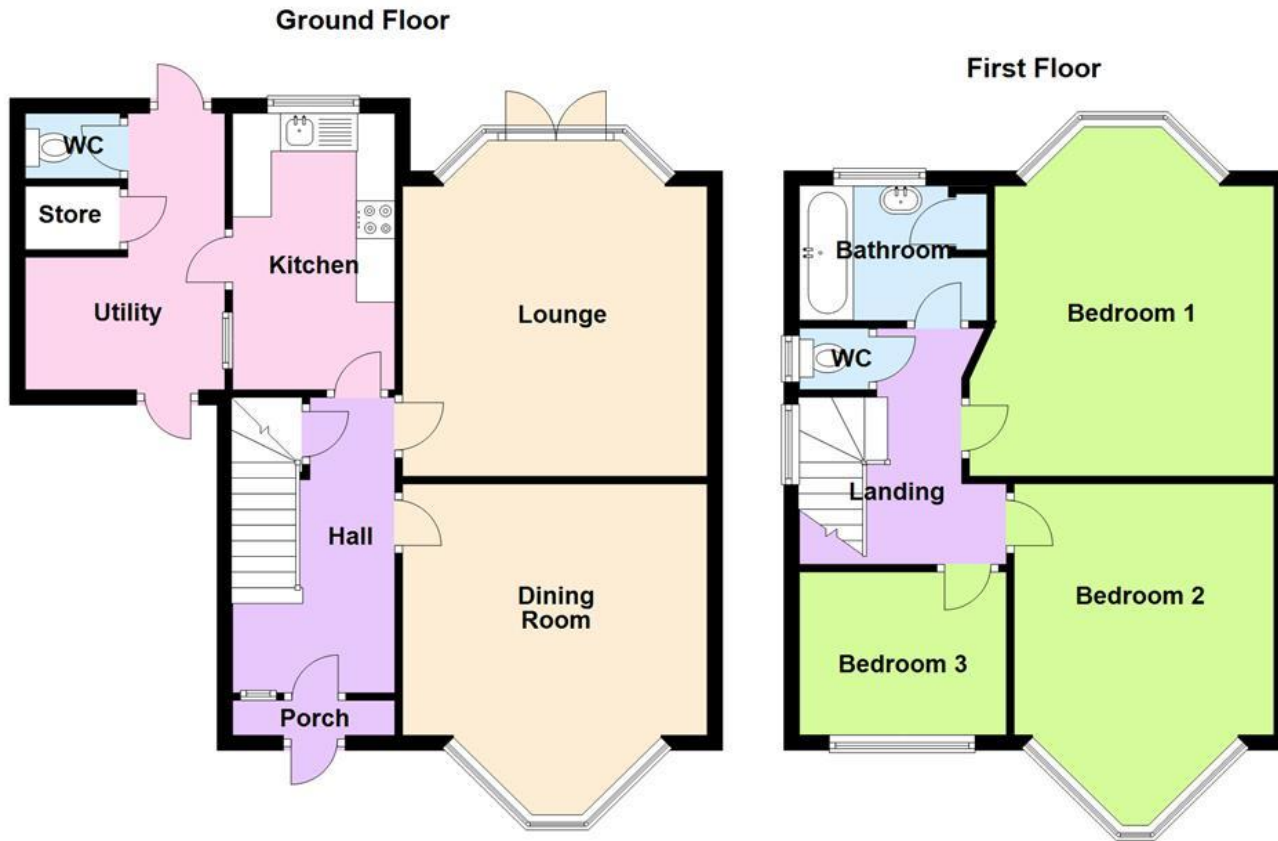
Every care has been taken with the preparation of these Sales Particulars but they are for general guidance only and complete accuracy cannot be guaranteed. If there is any point which is of particular importance, professional verification should be sought. The mention of any fixtures, fittings and/or appliances does not imply they are in full efficient working order as they have not been tested. All dimensions are approximate. Photographs are reproduced for general information and it cannot be inferred that any item shown is included in the sale. These Sales Particulars do not constitute a contract or part of a contract.
Came on the market: 25th April 2024

Viewer's Note:

Services connected: Gas, Electric, Water and Drainage
Council tax band: C
Tenure: Freehold

Floor Plan

This floor plan is not drawn to scale and is for illustration purposes only



Energy Efficiency Rating

New
Instruction
Awaiting
E.P.C.

Map Location

