



Steeple Lodge, Church Road,
Sutton Coldfield, B73 5GB

£145,000

£145,000



Ideally situated in a much sought after retirement development this well proportioned one double bed lower ground floor apartment benefits from having a generous living room with direct garden access, a contemporary kitchen, updated shower room and double depth wardrobe. Accessed via secure communal doors the development offers many amenities including a residents lounge with kitchen, guest accommodation, a laundry room, well being suite, gardens, parking, on site manager and intercoms. An early viewing must be undertaken in order to fully appreciate the opportunity on offer and avoid disappointment.





Property Specification

SUPERBLY LOCATED RETIREMENT FLAT
 LOWER GROUND FLOOR SITUATION WITH DIRECT ACCESS
 TO GARDENS
 ONE GENEROUS DOUBLE BEDROOM WITH DOUBLE DEPTH
 WARDROBE
 WELL PROPORTIONED LIVING ROOM

Hall

Shower Room

Cupboard

Store

Living Room 6.14m (20'2") x 3.28m (10'9")

Kitchen 2.77m (9'1") x 2.00m (6'7")

Bedroom 5.40m (17'9") x 3.96m (13')

Wardrobe

Agent's Note:

Every care has been taken with the preparation of these Sales Particulars but they are for general guidance only and complete accuracy cannot be guaranteed. If there is any point which is of particular importance, professional verification should be sought. The mention of any fixtures, fittings and/or appliances does not imply they are in full efficient working order as they have not been tested. All dimensions are approximate. Photographs are reproduced for general information and it cannot be inferred that any item shown is included in the sale. These Sales Particulars do not constitute a contract or part of a contract.
 Came on the market: 25th October 2024

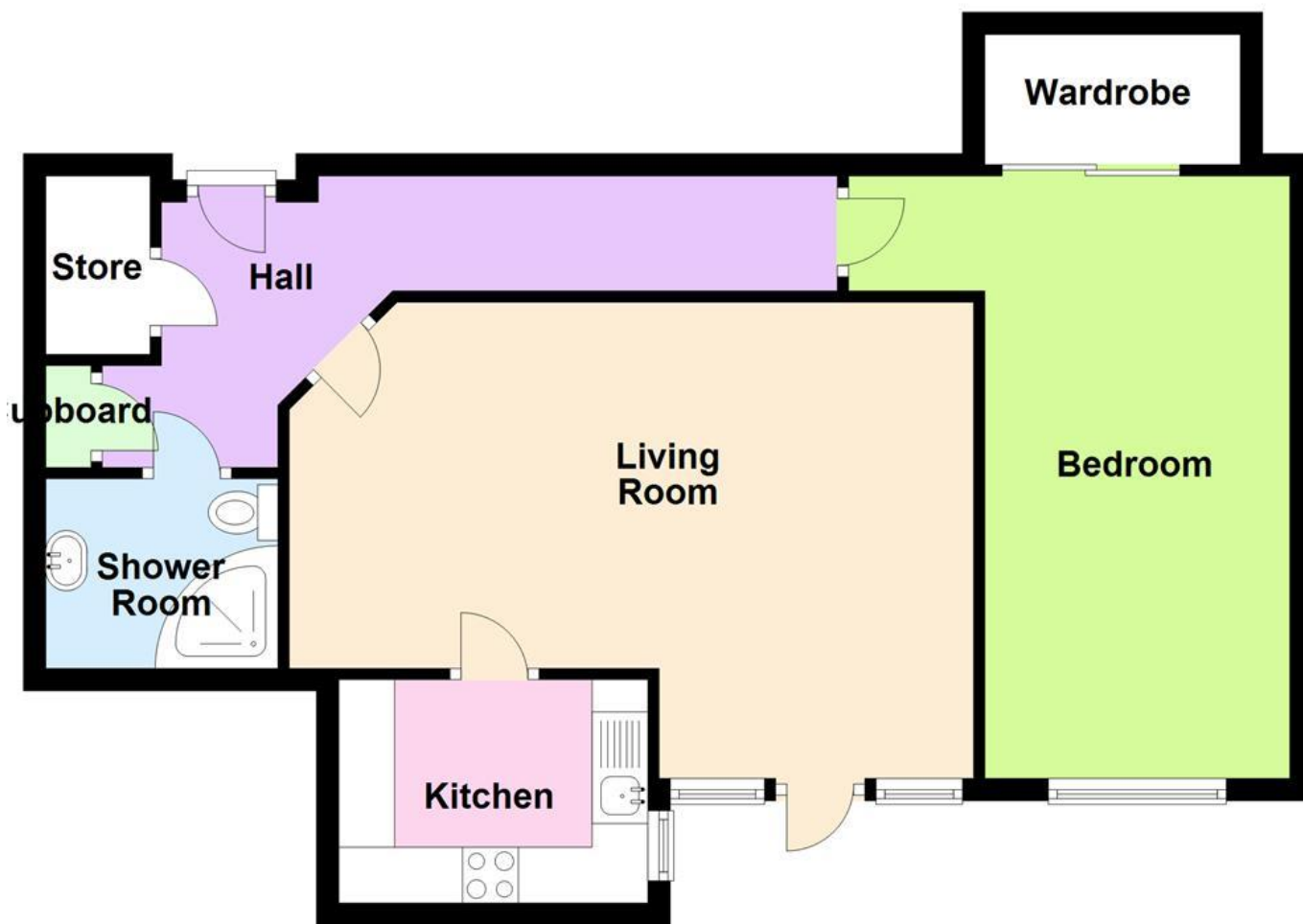
Viewer's Note:

Services connected:
 Council tax band:
 Tenure: 116 years remaining on the lease
 Ground Rent: £637
 Service Charge: £2576
 Restrictions:

Floor Plan

This floor plan is not drawn to scale and is for illustration purposes only

Floor Plan



Energy Efficiency Rating

**New
Instruction
Awaiting
E.P.C.**

Map Location

