



Chester Road,
Sutton Coldfield, B73 5HU

£240,000

Chester Road, B73 5HU

£240,000



This superbly situated well maintained three bed modern style terraced property occupies a convenient location set within close proximity of the nearby shopping centres at Boldmere and Wylde Green. Benefitting from superior local transport links both road and rail the property has the advantage of no onward chain.

The accommodation itself includes a well-proportioned lounge, separate dining room and fitted kitchen along with a first floor bathroom and must be viewed internally at the earliest opportunity in order to avoid disappointment.





Property Specification

SUPERBLY LOCATED MODERN STYLE TERRACE
THREE BEDROOMS
NO ONWARD CHAIN
SEPARATE LOUNGE AND DINING ROOM
FITTED KITCHEN WITH PANTRY STORE

Hall

Lounge 4.20m (13'9") x 3.35m (11')

Dining Room 2.78m (9'2") max x 2.67m (8'9")

Kitchen 3.14m (10'3") x 2.04m (6'8")

Landing

Bedroom 1 4.11m (13'6") x 2.84m (9'4")

Bedroom 2 2.84m (9'4") x 2.65m (8'8")

Bedroom 3 3.16m (10'4") x 1.87m (6'2")

Bathroom

Agent's Note:

Every care has been taken with the preparation of these Sales Particulars but they are for general guidance only and complete accuracy cannot be guaranteed. If there is any point which is of particular importance, professional verification should be sought. The mention of any fixtures, fittings and/or appliances does not imply they are in full efficient working order as they have not been tested. All dimensions are approximate. Photographs are reproduced for general information and it cannot be inferred that any item shown is included in the sale. These Sales Particulars do not constitute a contract or part of a contract.
Came on the market: 2nd July 2024

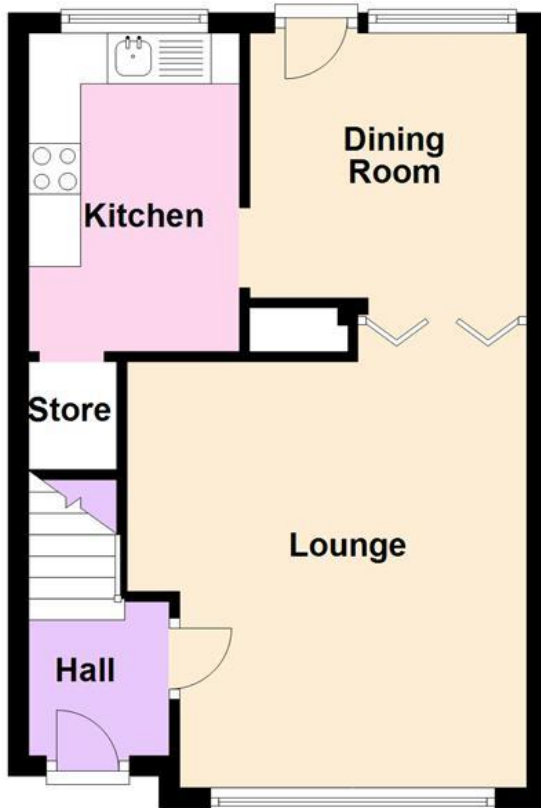
Viewer's Note:

Services connected: Gas, Electric, Water and Drainage
Council tax band: C
Tenure: Freehold

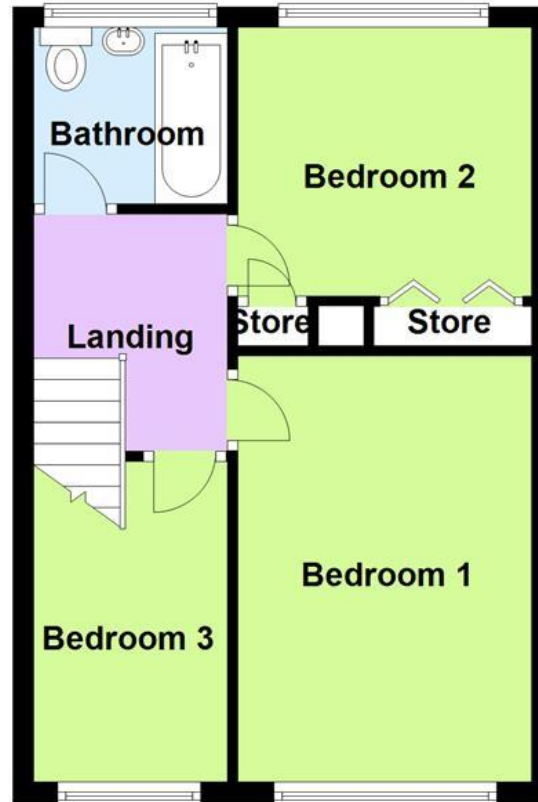
Floor Plan

This floor plan is not drawn to scale and is for illustration purposes only

Ground Floor



First Floor



Energy Efficiency Rating

**New
Instruction
Awaiting
E.P.C.**

Map Location

