



Midland Drive,  
Sutton Coldfield, B72 1TU

£85,000

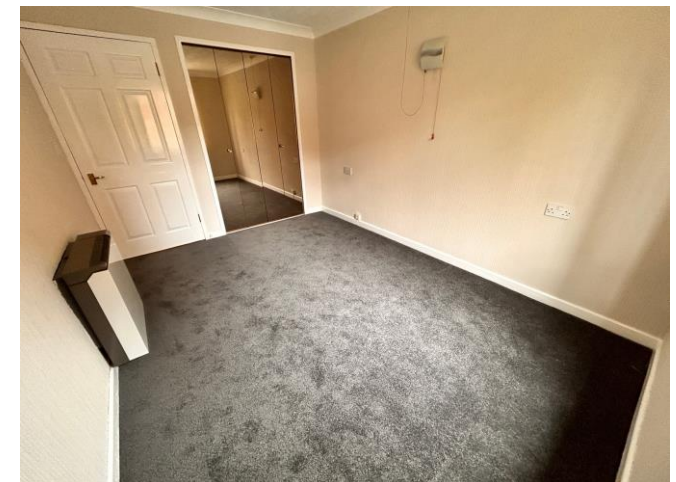


£85,000



This well-presented retirement flat occupies an enviable location close to Sutton Coldfield Town Centre enjoying easy access to a wealth of local amenities including shops and public transport links.

Offering secure accommodation for the over sixties the accommodation boasts a re-fitted shower room updated kitchen, generous living room and a double bedroom whilst having use of communal facilities such as a laundry, garden and common room with on site management and intercom facilities. An early viewing is essential to avoid disappointment.







## Property Specification

OVER SIXTIES RETIREMENT FLAT  
EXCELLENT LOCATION CLOSE TO TOWN CENTRE  
ONE DOUBLE BEDROOM WITH BUILT IN WARDROBE  
FITTED KITCHEN  
MODERN STYLE SHOWER ROOM

Hall

Store

Living Room 4.67m (15'4") x 3.23m (10'7")

Kitchen 2.23m (7'4") x 1.62m (5'4")

Bedroom 4.26m (14') max x 2.67m (8'9")

Shower Room

### Agent's Note:

Every care has been taken with the preparation of these Sales Particulars but they are for general guidance only and complete accuracy cannot be guaranteed. If there is any point which is of particular importance, professional verification should be sought. The mention of any fixtures, fittings and/or appliances does not imply they are in full efficient working order as they have not been tested. All dimensions are approximate. Photographs are reproduced for general information and it cannot be inferred that any item shown is included in the sale. These Sales Particulars do not constitute a contract or part of a contract.  
Came on the market: 9th May 2024

### Viewer's Note:

Services connected: Electric, Water and Drainage  
Council tax band: C  
Tenure: Leasehold with 91 years remaining  
Ground Rent: £500  
Service Charge: £2600  
Restrictions: Over 60s

# Floor Plan

This floor plan is not drawn to scale and is for illustration purposes only



## Energy Efficiency Rating

**New  
Instruction  
Awaiting  
E.P.C.**

## Map Location

