



Elizabeth Road,
Sutton Coldfield, B73 5AS

Offers in the Region Of £340,000

Offers in the Region Of £340,000

3  1  2 

Conveniently located for many sought after amenities including sought after shops, schools and transport links this superbly presented characterful three bed detached property offers excellent accommodation for potential buyers.

Benefitting from an attractive through lounge dining room, a family / breakfast room and extended kitchen with a contemporary first floor bathroom and mature garden with external cellar access it must be viewed at the earliest opportunity in order to avoid disappointment.





Property Specification

SUPERBLY PRESENTED CHARACTERFUL DETACHED PROPERTY
THREE BEDROOMS
EXCELLENT THOUGH LOUNGE DINING ROOM
EXTENDED KITCHEN
FAMILY / BREAKFAST ROOM

Hall

Lounge 3.61m (11'10") max x 2.97m (9'9")

Dining Room 3.74m (12'3") max x 2.97m (9'9")

Breakfast / Family Room 4.52m (14'10") max x 2.39m (7'10")

Kitchen 4.19m (13'9") x 2.01m (6'7")

Landing

Bathroom

Bedroom 1 3.65m (12') max x 2.97m (9'9")

Bedroom 2 3.78m (12'5") x 2.97m (9'9")

Bedroom 3 1.92m (6'4") x 1.57m (5'2")

Agent's Note:

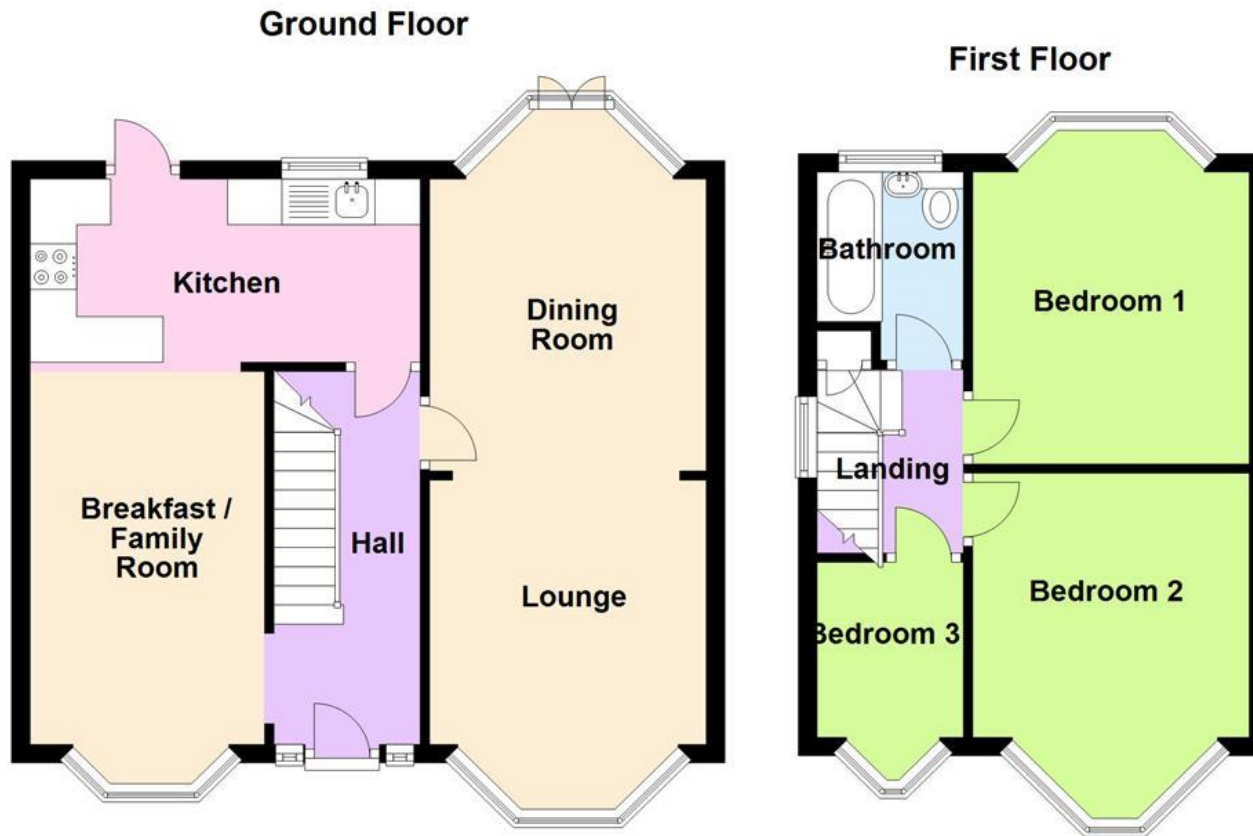
Every care has been taken with the preparation of these Sales Particulars but they are for general guidance only and complete accuracy cannot be guaranteed. If there is any point which is of particular importance, professional verification should be sought. The mention of any fixtures, fittings and/or appliances does not imply they are in full efficient working order as they have not been tested. All dimensions are approximate. Photographs are reproduced for general information and it cannot be inferred that any item shown is included in the sale. These Sales Particulars do not constitute a contract or part of a contract.
Came on the market: 16th February 2024

Viewer's Note:

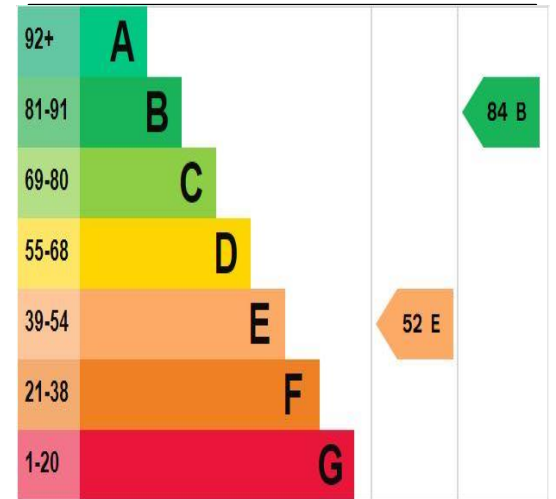
Services connected:
Council tax band: C
Tenure: Freehold
Other Charges:

Floor Plan

This floor plan is not drawn to scale and is for illustration purposes only



Energy Efficiency Rating



Map Location

