



Birmingham Road,
Sutton Coldfield, B72 1DD

£190,000

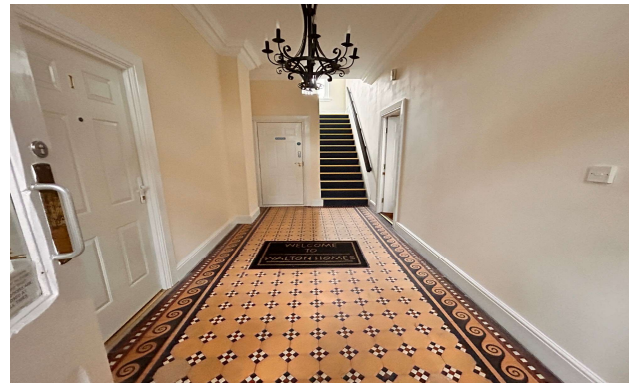
£190,000



This well proportioned superbly located one double bed ground floor flat is situated in a most characterful period property set within close proximity of many sought after amenities including desirable shops and transport links.

Offering the advantage of no onward chain the accommodation includes a generous lounge dining room with fitted kitchen off with an en-suite bathroom, separate shower room, secure communal garden and allocated parking space.

An early viewing is essential in order to avoid disappointment.





Property Specification

SUPERBLY PROPORTIONED AND WELL PRESENTED
GROUND FLOOR APARTMENT
ONE DOUBLE BEDROOM
GENEROUS LOUNGE DINING ROOM
EN-SUITE BATHROOM AND SEPARATE SHOWER ROOM
MODERN STYLE FITTED KITCHEN

Living Room 7.10m (23'4") x 2.05m (6'9")

Kitchen 2.36m (7'9") x 2.36m (7'9")

Shower Room

Store

Bedroom 1 3.87m (12'8") x 3.20m (10'6")

En-suite

Agent's Note:

Every care has been taken with the preparation of these Sales Particulars but they are for general guidance only and complete accuracy cannot be guaranteed. If there is any point which is of particular importance, professional verification should be sought. The mention of any fixtures, fittings and/or appliances does not imply they are in full efficient working order as they have not been tested. All dimensions are approximate. Photographs are reproduced for general information and it cannot be inferred that any item shown is included in the sale. These Sales Particulars do not constitute a contract or part of a contract.
Came on the market: 15th February 2024

Viewer's Note:

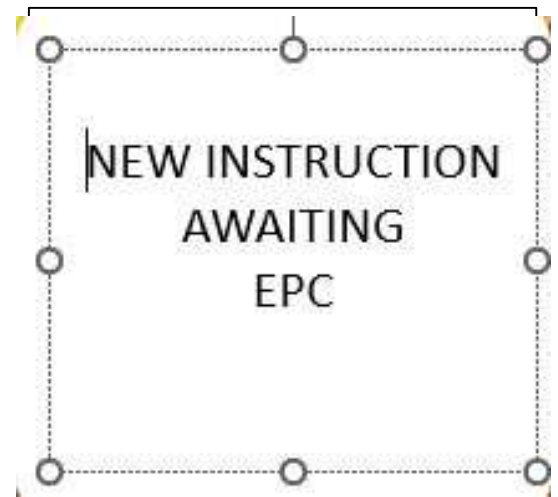
Services connected:
Council tax band: C
Tenure: years remaining, lease from
Ground Rent: £0
Service Charge: £0
Restrictions:

Floor Plan

This floor plan is not drawn to scale and is for illustration purposes only



Energy Efficiency Rating



Map Location

