



Pommel Close
Walsall, WS5 4QE

Offers in the Region Of £120,000

Walsall

Offers in the Region Of £120,000



Set in a quiet Cul-de-Sac location, within easy reach of amenities and transport links and offered for sale with no onward chain, this first floor maisonette offers neatly presented accommodation with an internal viewing recommended.

Accessed via a private front door with stairs leading to the first floor, the accommodation includes, light and airy living room with window to the front elevation, well appointed kitchen with a range of fitted units, integrated oven and hob with extractor over and plumbing for a washing machine.

Completing the accommodation there are two double bedrooms and the bathroom with suite comprising WC, wash basin and bath with shower mixer tap fitment.





Property Specification

NEATLY PRESENTED FIRST FLOOR MAISONETTE
CUL-DE-SAC LOCATION
LIGHT AND AIRY LOUNGE
WELL-APPOINTED KITCHEN
TWO DOUBLE BEDROOMS

Hall

Living Room

4.75m (15'7") x 3.37m (11'1")

Kitchen

2.83m (9'3") x 2.47m (8'1")

Bedroom 1

3.95m (13') x 2.67m (8'9")

Bedroom 2

3.63m (11'11") x 2.67m (8'9")

Bathroom

2.83m (9'3") x 1.70m (5'7")

Agent's Note:

Every care has been taken with the preparation of these Sales Particulars but they are for general guidance only and complete accuracy cannot be guaranteed. If there is any point which is of particular importance, professional verification should be sought. The mention of any fixtures, fittings and/or appliances does not imply they are in full efficient working order as they have not been tested. All dimensions are approximate. Photographs are reproduced for general information and it cannot be inferred that any item shown is included in the sale. These Sales Particulars do not constitute a contract or part of a contract.
Came on the market: 17th July 2024

Viewer's Note:

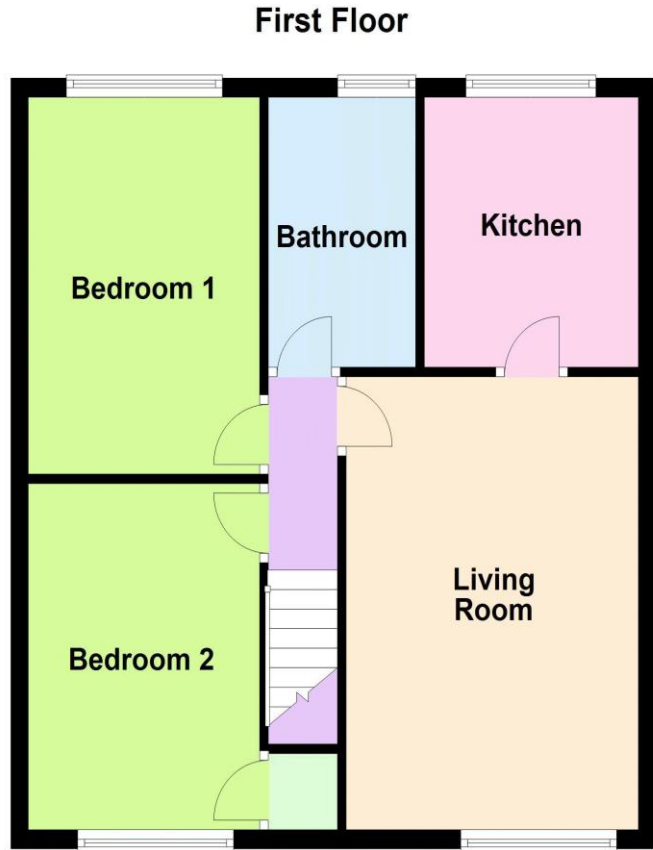
Services connected: All Services

Council tax band: A

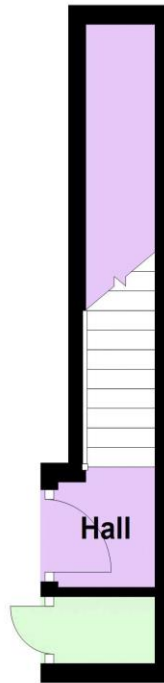
Tenure: Leasehold

Floor Plan

This floor plan is not drawn to scale and is for illustration purposes only



Ground Floor



Energy Efficiency Rating

New
Instruction
Awaiting
E.P.C.

Map Location

