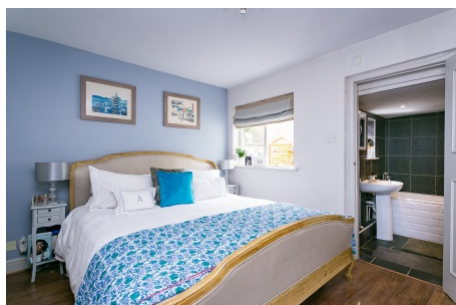


Streatham Vale, Streatham SW16

Borough: Lambeth

£1,650 pcm

- Private garden
- Two double bedrooms




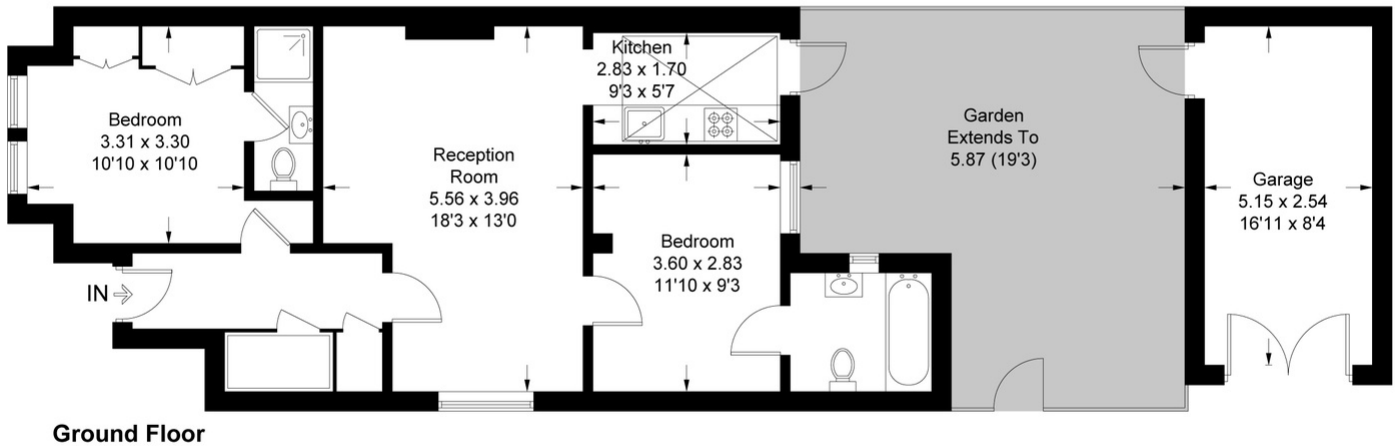
A beautifully presented ground floor flat, with direct access to the private garden and garage. Both bedrooms are equipped with their own en-suite bathrooms. Located on Streatham Vale, the flat is close to Streatham Common station; both Victoria and London Bridge stations are less than 30 minutes away by train. Available from the end of June, this property comes part-furnished.

Streatham Vale

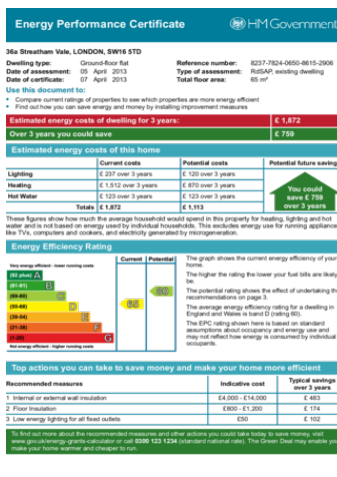
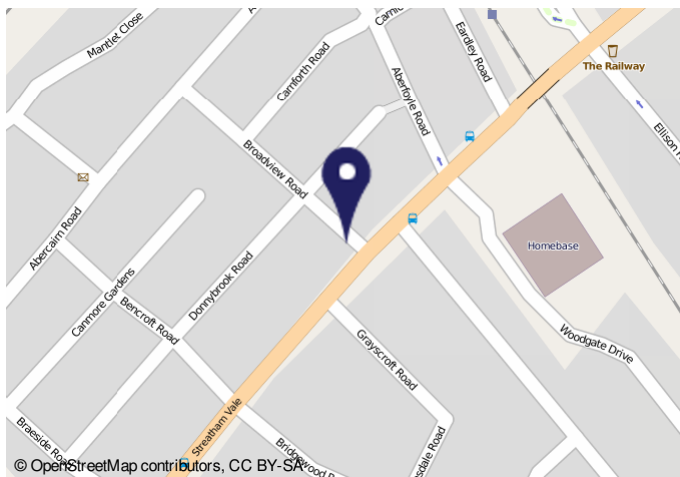
Approximate Gross Internal Area = 60.7 sq m / 653 sq ft
Reduced Headroom = 1.5 sq m / 16 sq ft
Garage = 13.6 sq m / 146 sq ft
Total = 75.8 sq m / 815 sq ft



 = Reduced headroom below 1.5m / 5'0



This plan is for layout guidance only. Not drawn to scale unless stated. Windows and door openings are approximate. Whilst every care is taken in the preparation of this plan, please check all dimensions, shapes and compass bearings before making any decisions reliant upon them. (ID550310)



Important Notice

In accordance with the Property Misdescriptions Act (1991) we have prepared these sales particulars as a general guide to give a broad description of the property. They are not intended to constitute part of an offer or contract. We have not carried out a structural survey and the services, appliances and specific fittings have not been tested. All photographs, measurements, floor plans and distances referred to are given as a guide only and should not be relied upon for the purchase of carpets or any other fixtures or fittings. Lease details, service charges and ground rent (where applicable) are given as a guide only and should be checked and confirmed by your solicitor prior to exchange of contracts.