

urbansplash

Moho Castlefield Manchester



**Apartments for sale
or to rent**

Designed by shedkm, the hugely successful Moho offers clever use of space in its fantastic Castlefield location. Moho has won eight awards for innovation, design and marketing.

Urban Splash were the first developer in the UK to offer modular construction to the private homes market.

0333 666 9999
live@urbansplash.co.uk
www.urbansplash.co.uk/moho



Moho

42 Ellesmere Street

Castlefield

Manchester

M15 4FY

Moho apartments are designed around a central bathroom and kitchen area, with the living space and bedrooms either side. A large timber decked balcony allows for private outdoor space in addition to the resident's communal garden. With floor to ceiling glazing, Smeg kitchen appliances and storage built into the apartment, including wardrobe space.

The ground floor space in Moho is occupied by a convenience store, two bar/restaurants and offices. This adds to the community created at Moho and offers great amenities for residents on their doorstep.

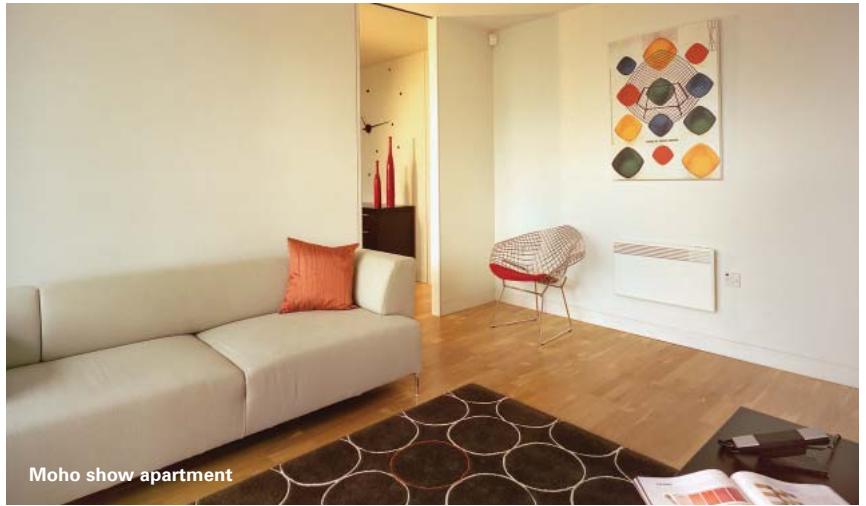
Location

Moho is located in the vibrant Castlefield area and just a five minute walk to the city centre along the canal towpath. It has excellent transport links with Cornbrook Metrolink station situated further along the road, proximity to Deansgate station and direct access onto the Mancunian Way and further motorway network.

» [Click here to see location map](#)



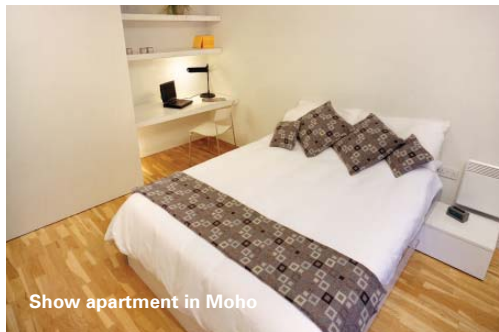
Moho exterior



Moho show apartment



Moho courtyard



Show apartment in Moho



Specification

Finishes, fixtures and fittings

- Built in storage in the main bedroom and hallway
- Sliding doors for flexible space
- Private, timber decked balconies
- Plumbing for washing machine

Heating

- Wall mounted slim line electric panel heaters

Windows

- Full height, double-glazed sliding windows to living area and bedroom

Flooring

- Hardwood timber floors

Kitchens

- Fully fitted kitchens with plain gloss finish to doors
- Stainless steel sink set into white LG solid surface work top
- Built in containers for recycling
- Integrated dishwasher
- Built in stainless steel combined oven/microwave and halogen hob
- Integrated low level fridge with freezer compartment

Bathrooms

- Modern white ceramics and stainless steel/chrome fittings
- Bath with shower and mixer
- Wall mounted heated towel rail
- Concealed storage cabinet
- Heated mirror
- Tiled floor

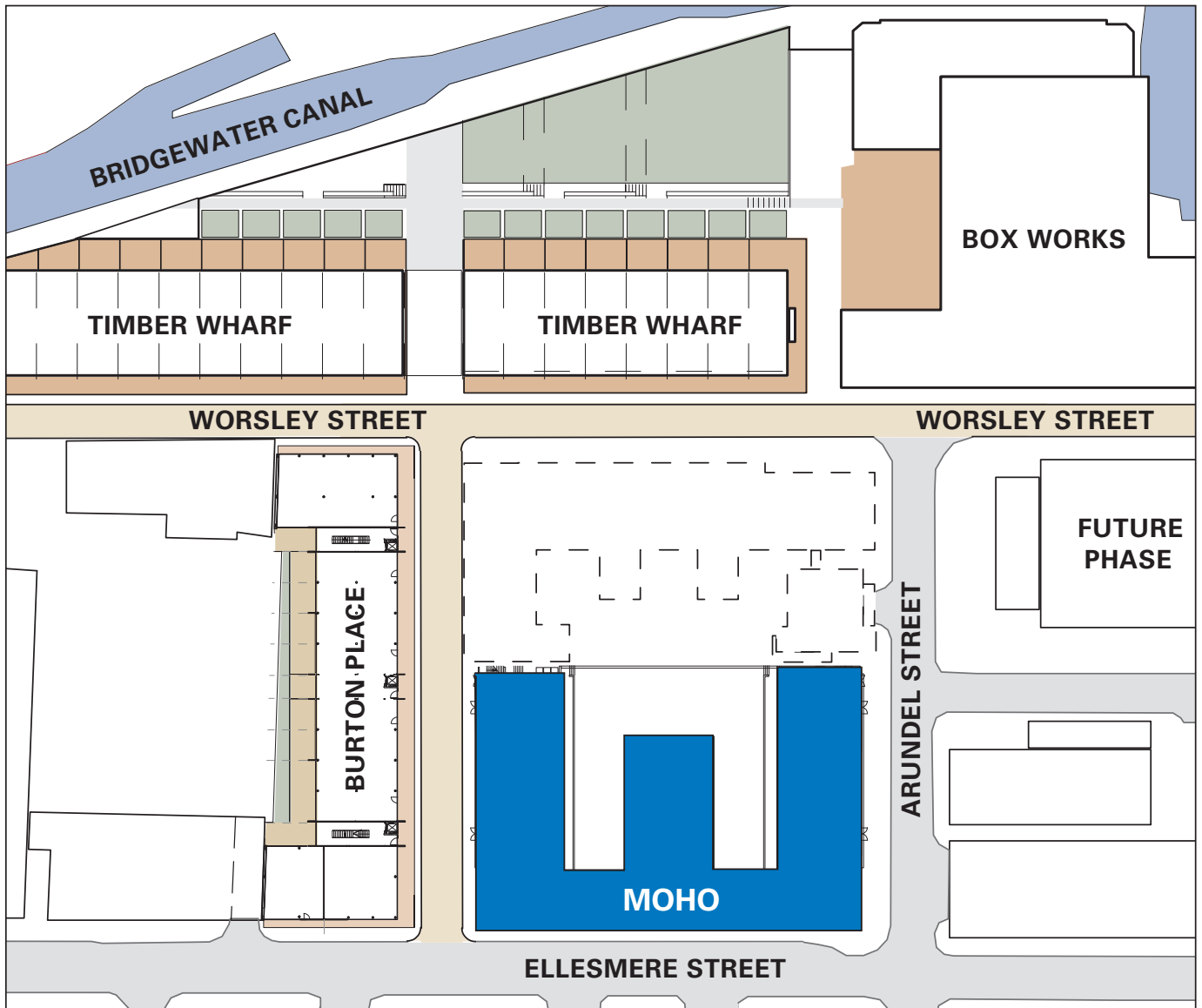
Services

- TV points in living area and main bedroom.
- Secure door entry system
- Intruder alarm
- Apartment-wide electric heating
- Dedicated space for washer/dryer

Common areas

- Access via a secure entrance and dedicated lift
- Intercom and handset linked to main door entry point
- Secure underground parking available (at an extra cost)
- Cycle parking
- Recycling bins provided in basement car park
- Private residents' garden

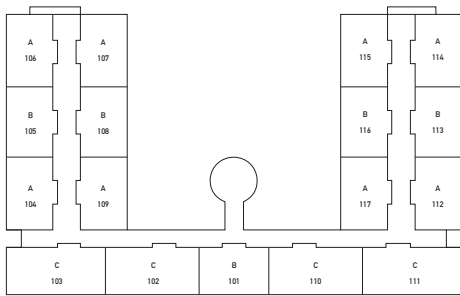
Site plan



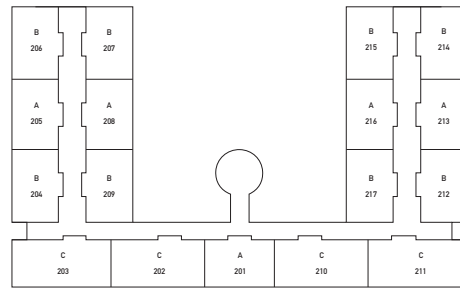
Floor plans



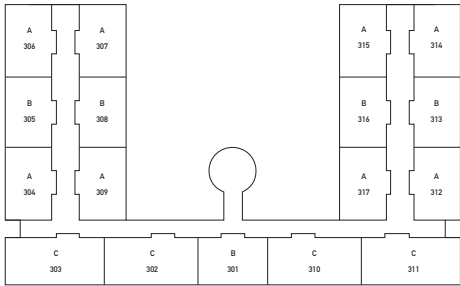
Level 01



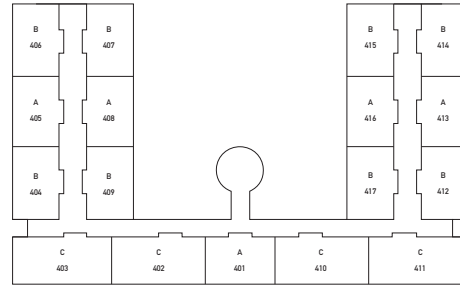
Level 02



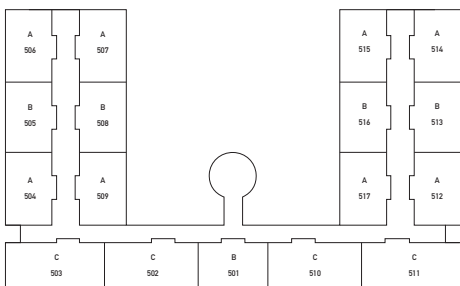
Level 03



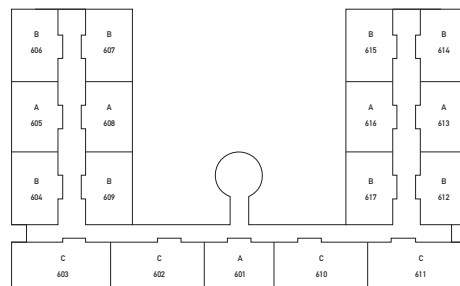
Level 04



Level 05



Level 06



DISCLAIMER: These particulars do not form any part of a contract. The information in these particulars was correct at the time of collation. Certain details are subject to change. Plans are not to scale. Images are representative of the space and may not be the actual unit. Please make sure you have the latest price list. For further details contact a member of the sales team.