

urbansplash

Burton Place Castlefield Manchester



**Apartments for sale
or to rent**



Burton Place was the fourth building to be completed in our comprehensive regeneration of Castlefield. Our second building to be

designed by Glenn Howells Architects, it has achieved a number of awards including a Housing Design award.

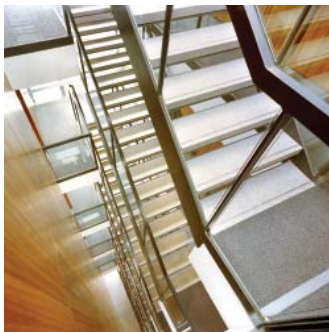
0333 666 9999
live@urbansplash.co.uk
www.urbansplash.co.uk/burton-place



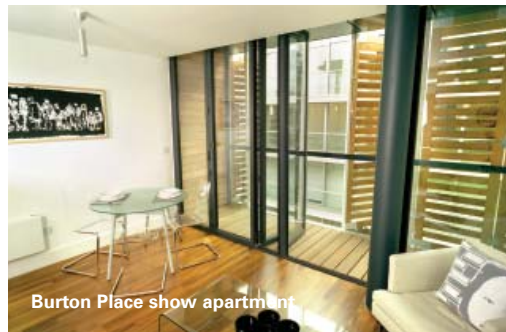
Burton Place show apartment



Show apartment in Burton Place



Burton Place show apartment



Burton Place external

Burton Place Castlefield Manchester M15 4LR

Burton Place features one, two and three bedroom apartments designed by Glenn Howells Architects. The apartments all have balconies and feature timber shutters to add a truly contemporary continental feel to the space. All apartments are fitted to a high specification including timber floors, fitted bathrooms and kitchens with appliances.

The ground floor at Burton Place is occupied by many offices. Across the road in Moho the ground floor space is occupied by a convenience store, two bar/restaurants and offices. This adds to the community created in Castlefield and offers great amenities for residents on their doorstep.

Location

Burton Place is located in the vibrant Castlefield area and just a five minute walk to the city centre along the canal towpath. It has excellent transport links with Cornbrook Metrolink station situated further along the road, proximity to Deansgate station and direct access onto the Mancunian Way and further motorway network.

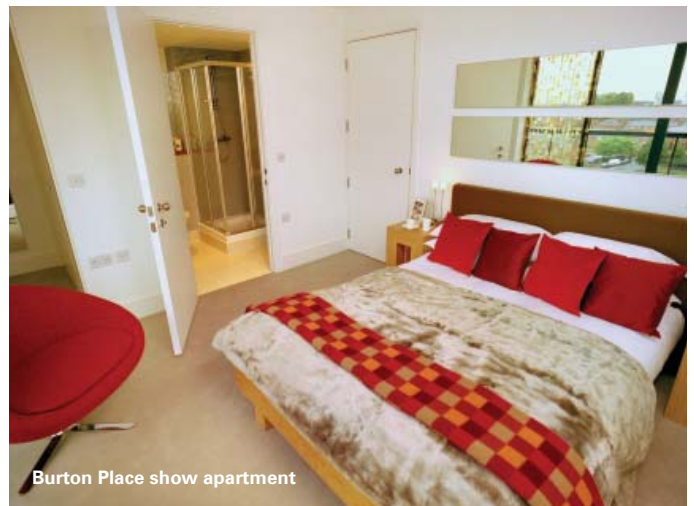
» [Click here to see location map](#)



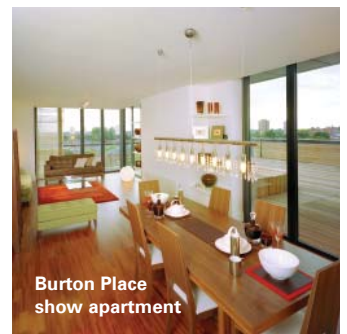
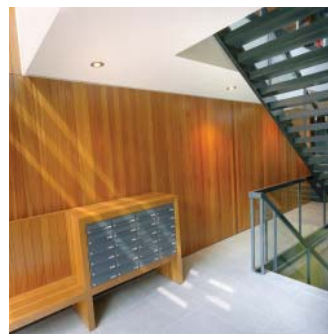
Burton Place exterior



Burton Place show apartment



Burton Place show apartment



Burton Place show apartment

Specification

Finishes, fixtures and fittings

- Stainless steel ironmongery throughout
- Allocated storage areas with sliding doors
- Sliding concertina timber shutters give added privacy to living room and balcony areas in most apartments
- All walls and ceilings are plastered and painted white
- All doors are full height solid and painted white

Heating

- Heating is from wall mounted slim-line electrical panels

Windows

- Double glazed windows in living rooms, some with sliding/folding retractable doors opening out to balcony
- Double glazed windows in bedrooms with 'tilt and turn' action opening inwards

Flooring

- Solid timber floor to living and dining spaces
- The bedrooms are carpeted

Kitchens

- Fully fitted and finished with plain coloured lacquered doors
- Stainless steel sink is set into the worktop
- Chrome mixer taps
- Stainless steel oven, hob, hood, built in
- High level fridge and low-level freezer
- The kitchen flooring is a terrazzo tile

Bathrooms

- Mosaic tiled splash back behind units in bathroom and shower room
- Modern white ceramics and chrome fittings
- Coloured mosaic tiled walls surrounding the bath and sink
- The bathroom flooring is a terrazzo tile

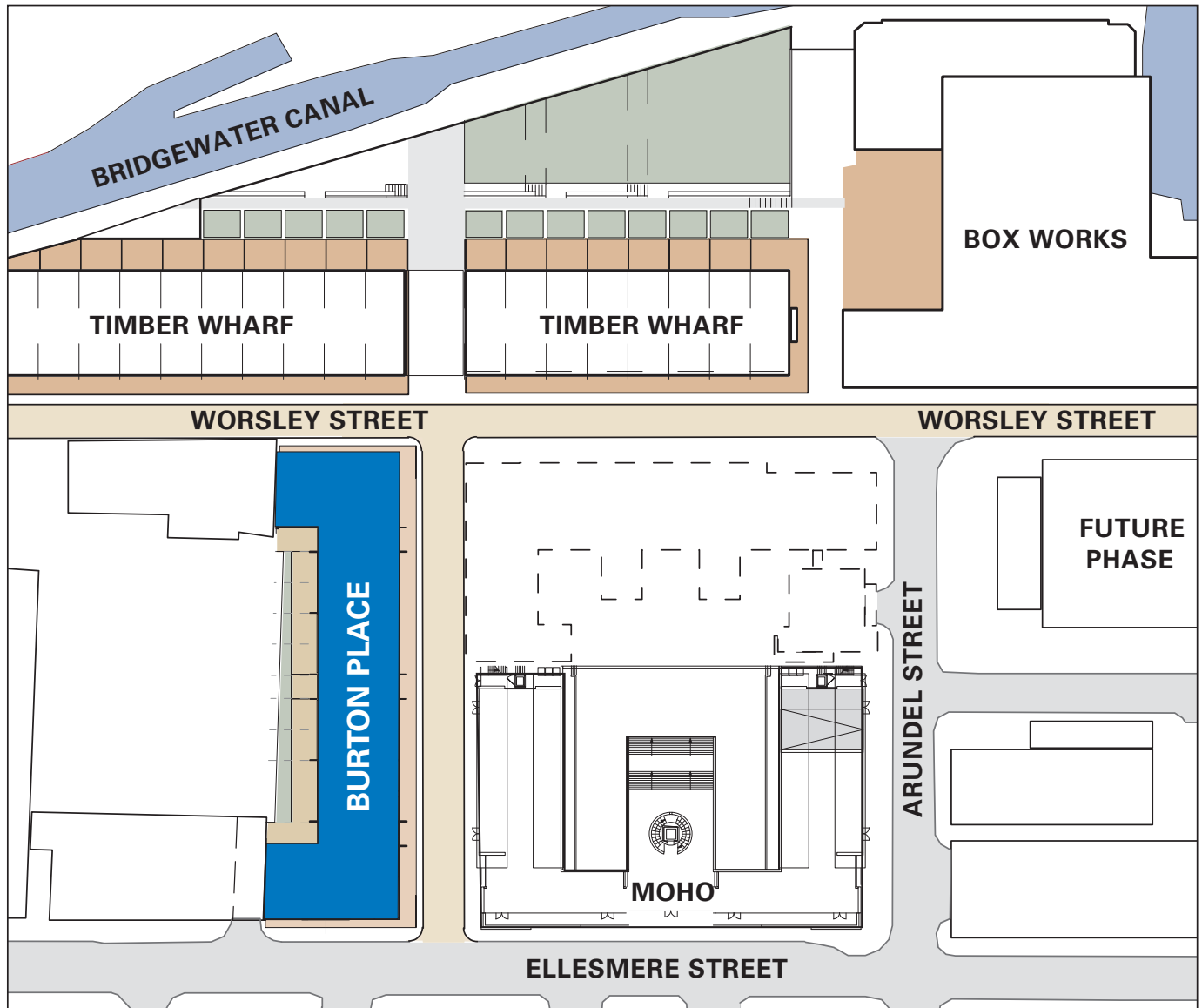
Services

- BT/ADSL sockets
- TV aerial sockets
- Sky socket (Sky box and registration fee not included)
- Water heated electrically
- Plumbed position for washer dryer
- Intruder alarm

Common areas

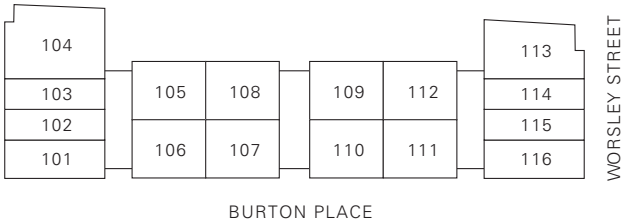
- Access via a secure entrance atrium and dedicated lift
- Secure underground parking available (at an extra cost)
- Cycle parking available
- Recycling bins provided in basement car park

Site plan

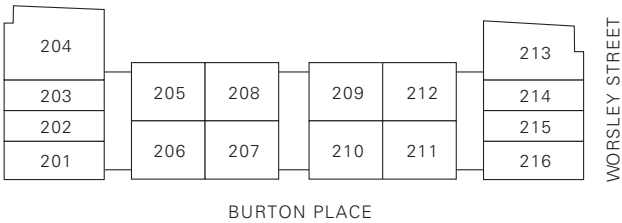


Floor plans

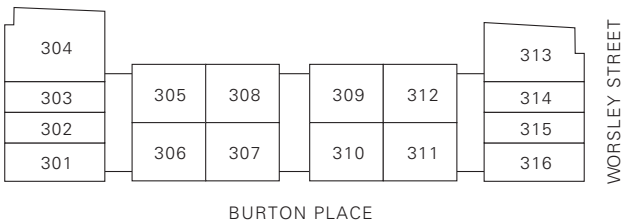
Level 01



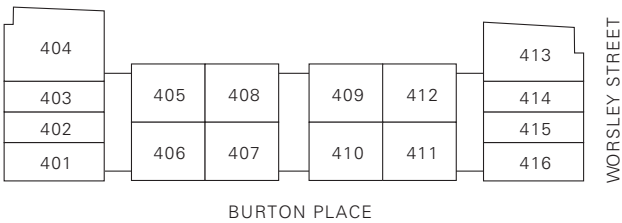
Level 02



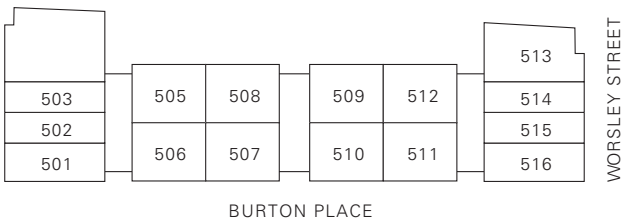
Level 03



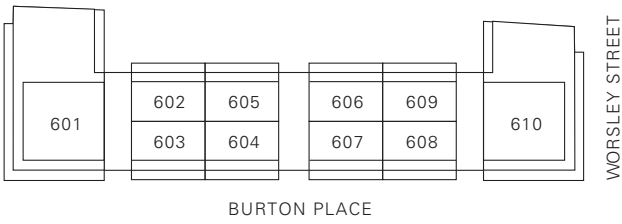
Level 04



Level 05



Level 06



DISCLAIMER: These particulars do not form any part of a contract. The information in these particulars was correct at the time of collation. Certain details are subject to change. Plans are not to scale. Images are representative of the space and may not be the actual unit. Please make sure you have the latest price list. For further details contact a member of the sales team.