



RICHMONDS

Nordik Gardens, Hedge End, Southampton, SO30 0LQ

£485,000

A four-bedroom family home with a large wrap around garden situated in Hedge End.

Features include a spacious lounge, a refitted kitchen with integrated appliances, a dining room, and ground floor cloakroom. This lovely home has a light and stylish decor throughout and benefits from gas central heating and double glazing. Upstairs, there are four bedrooms and a family bathroom.

Externally, there is a larger than average garage coupled with two parking spaces plus an attractive garden with a raised deck seating area.

This property is conveniently located close to Hedge End Village with its various amenities and local shops. There are also well-regarded local schools, plenty of green spaces to enjoy and yet still within easy access of the M27 motorway network.

Other Information

Tenure: Freehold

Approximate Age: Built in the 1960's

Heating: Gas central heating (boiler is located in a cupboard within bedroom one)

Windows: Double glazing

Loft: Insulated with ladder and light

Energy Rating: TBC (no solar panels)

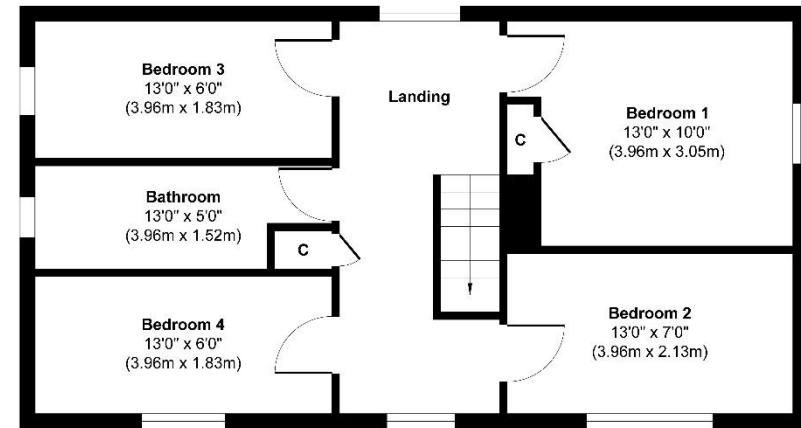
Sellers Position: Looking for a local property

Local Information:

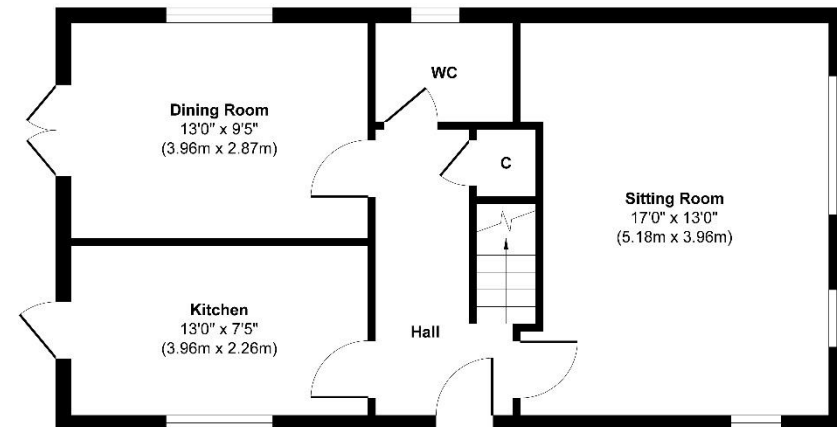
Council Tax: E

Local Authority: Eastleigh Borough Council





First Floor
Approximate Floor Area
569 sq. ft
(52.86 sq. m)



Ground Floor
Approximate Floor Area
569 sq. ft
(52.86 sq. m)

Approx. Gross Internal Floor Area 1138 sq. ft / 105.72 sq. m

Illustration for identification purposes only, measurements are approximate, not to scale.
Produced by Elements Property

Agents Note: The sellers of the property have provided the above information to us and we are therefore reliant on them providing the correct information. The floor plan and sizes are to be used as a guide only. Please check room sizes prior to ordering carpets or furniture. If you require confirmation on any particular point for specific purposes please contact our office for further information. If you have other questions about this property, please telephone **01489 789933**

R545 Ravensworth 01670 713330

Lankester House, 1 Freegrounds Road, Hedge End, Southampton SO30 OHG • 01489 789933 • admin@richmondsproperty.co.uk

