



RICHMONDS



# Chalice Court, Hedge End, Southampton, SO30 4TA

£665,000

An exceptional four bedroom detached executive home located in a premier position in Hedge End close to village shops and amenities.

The property has been adapted and extended by the current owners to create a bespoke family home. On the ground floor you are welcomed by a spacious entrance hall which accesses all principal rooms. The owners have created a generous kitchen/dining/family room at the rear of the property in addition to a well-appointed sitting room, reception room with his and hers office space, and a playroom.

On the first floor the luxurious master suite is extremely spacious and with a vast amount of wardrobe and storage space together with a high quality four-piece ensuite bathroom. Bedroom two also benefits from an en-suite shower room and built-in wardrobes.

Outside, there is a block paved driveway creating off-road parking for three vehicles and the rear garden is extremely private and has the benefit of an artificial lawn for low maintenance.

## Other Information

Tenure: Freehold

Approximate Age: 2000

Heating: Gas central heating

Windows: Double glazing

Loft: Not inspected

Energy Rating: C

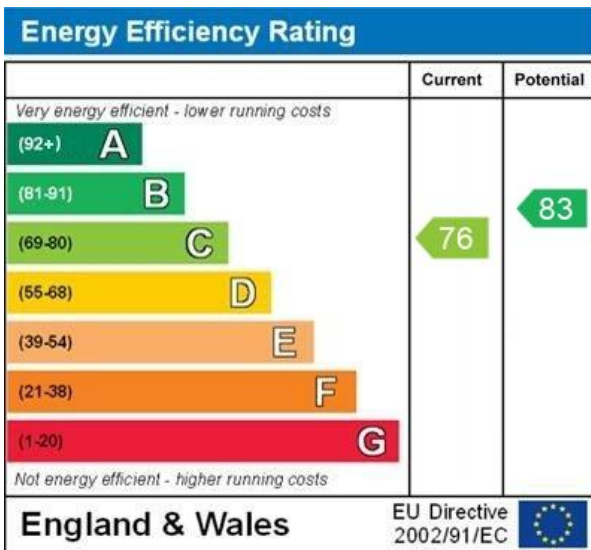
Sellers Position: Looking to move overseas

## Local Information:

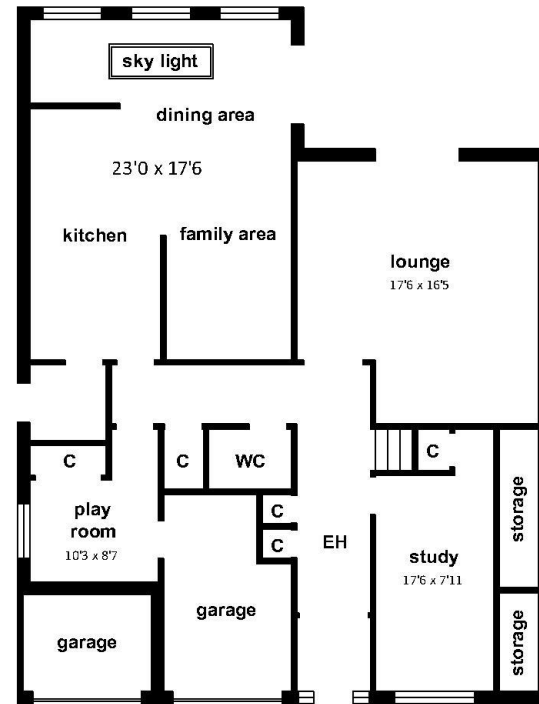
Council Tax: F

Local Authority: Eastleigh Borough Council





WWW.EPC4U.COM



APPROX FLOOR AREA 2304 sq ft 214 m2

**Agents Note:** The sellers of the property have provided the above information to us and we are therefore reliant on them providing the correct information. The floor plan and sizes are to be used as a guide only. Please check room sizes prior to ordering carpets or furniture. If you require confirmation on any particular point for specific purposes please contact our office for further information. If you have other questions about this property, please telephone **01489 789933**

R545 Ravensworth 01670 713330

Lankester House, 1 Freegrounds Road, Hedge End, Southampton SO30 0HG • 01489 789933 • [admin@richmondsproperty.co.uk](mailto:admin@richmondsproperty.co.uk)



