



RICHMONDS

Bracklesham Close, Southampton, SO19 8RX

£179,995

This 1-bedroom, freehold home is ideal for a first-time buyer. Enter the property ladder without leasehold charges: don't buy a flat, buy a house!

This spacious home is also a good investment for professionals and is positioned on the edge of Southampton City Centre.

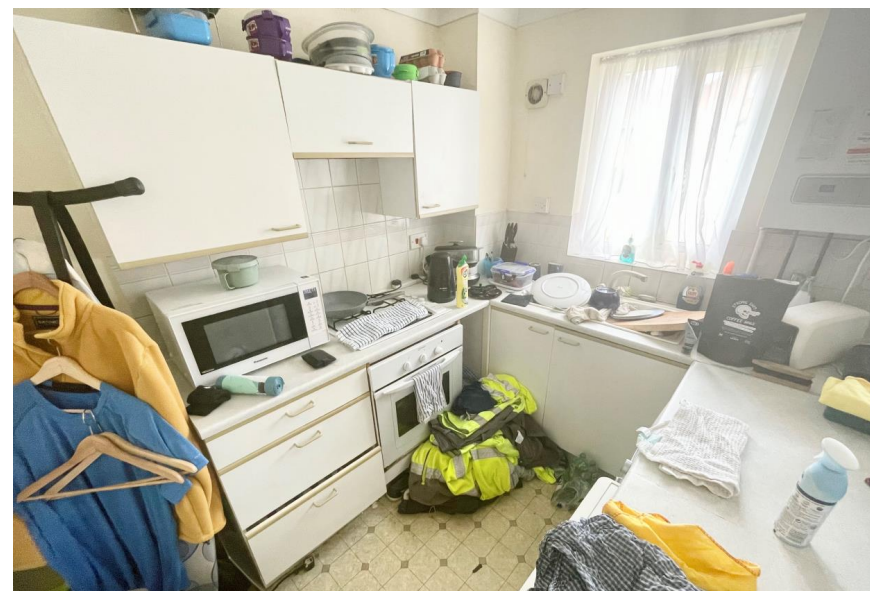
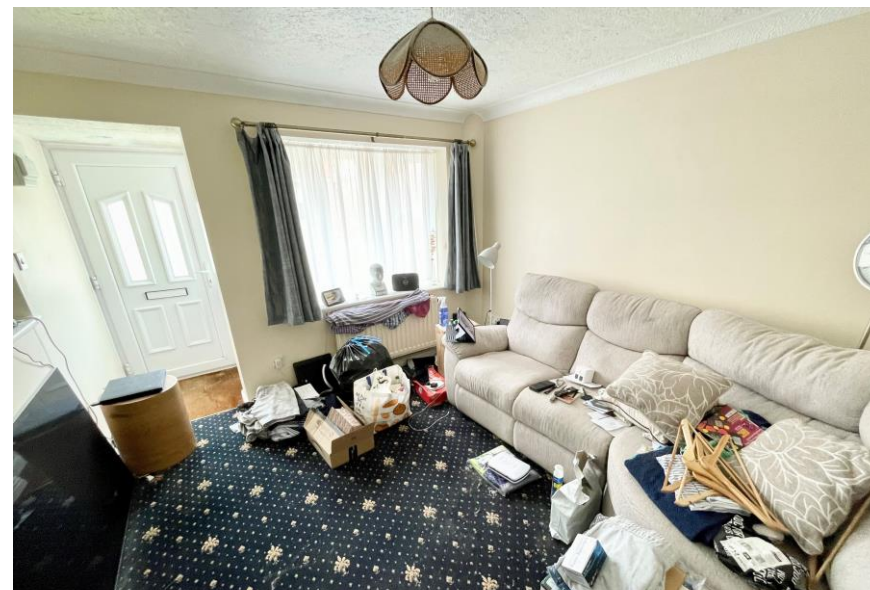
Parking is available in the cul-de-sac.

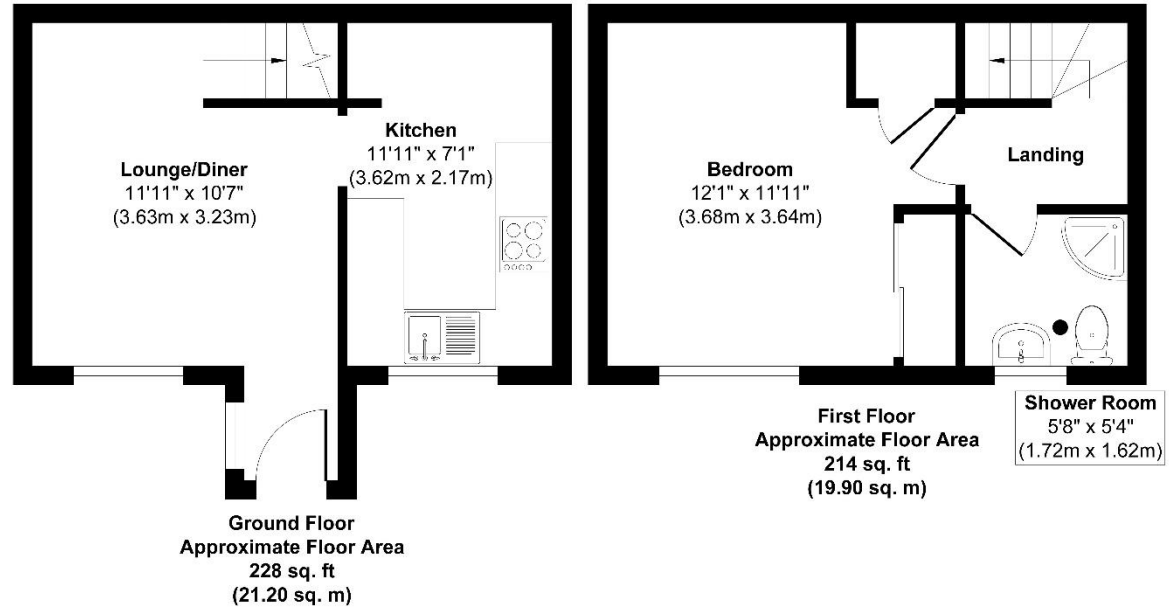
Other Information

Tenure: Freehold
Approximate Age: 1990's
Heating: Gas central heating
Windows: UPVC double glazing
Loft: Insulated
Energy Rating: C
Sellers Position: No chain

Local Information:

Council Tax: B
Local Authority: Southampton City Council





Approx. Gross Internal Floor Area 442 sq. ft / 41.10 sq. m
Illustration for identification purposes only, measurements are approximate, not to scale.
 Produced by Elements Property

Energy Efficiency Rating		Current	Potential
<i>Very energy efficient - lower running costs</i>			
(92+)	A		
(81-91)	B		90
(69-80)	C	72	
(55-68)	D		
(39-54)	E		
(21-38)	F		
(1-20)	G		
<i>Not energy efficient - higher running costs</i>			
England & Wales		EU Directive 2002/91/EC	

WWW.EPC4U.COM

Agents Note: The sellers of the property have provided the above information to us and we are therefore reliant on them providing the correct information. The floor plan and sizes are to be used as a guide only. Please check room sizes prior to ordering carpets or furniture. If you require confirmation on any particular point for specific purposes please contact our office for further information. If you have other questions about this property, please telephone **01489 789933**

R545 Ravensworth 01670 713330

Lankester House, 1 Freegrounds Road, Hedge End, Southampton SO30 0HG • 01489 789933 • admin@richmondsproperty.co.uk

