



RICHMONDS

55 Bursledon Road, Hedge End, Southampton, SO30 0BP

£460,000

A character three-bedroom house in need of modernisation.

Features include: two reception rooms, a kitchen with pantry plus a ground floor bathroom and separate WC.

Upstairs, there are three double bedrooms with period fireplaces.

To the front of the house is a large lawned area. The rear garden is also of a good size.

Positioned on the edge of the village with no chain.

Other Information

Tenure: Freehold

Approximate Age: Built circa 1900

Windows: Double glazing

Loft: Empty

Energy Rating: G

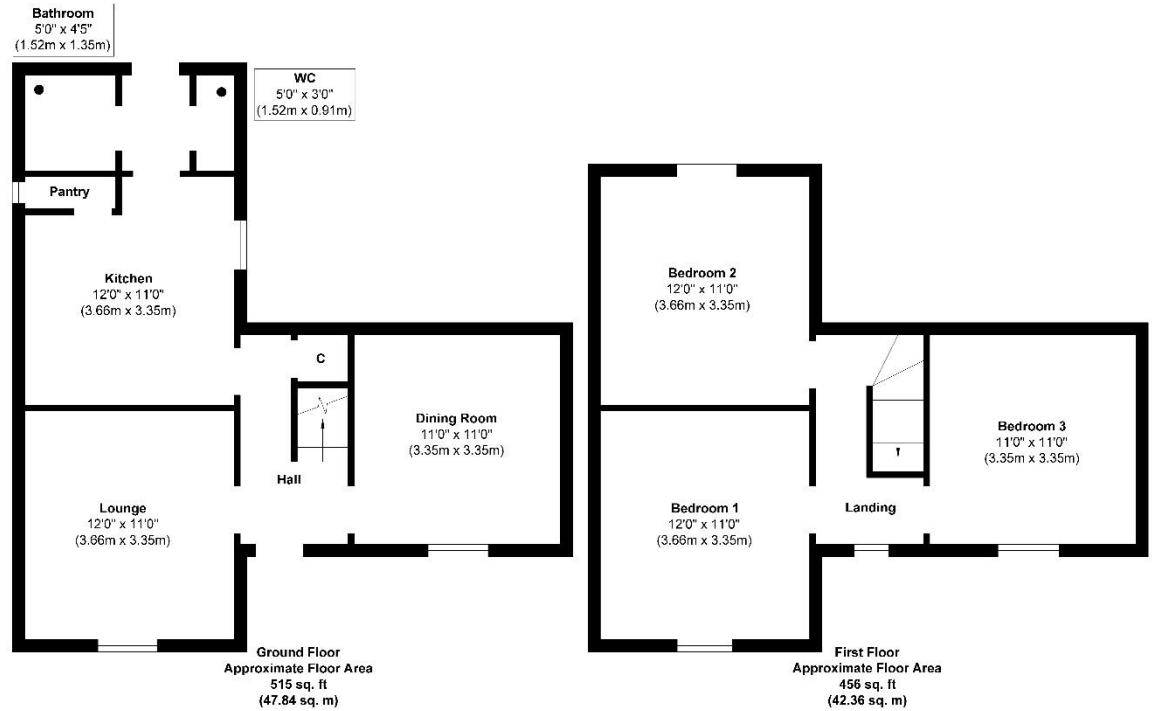
Sellers Position: No forward chain

Local Information:

Council Tax: D

Local Authority: Eastleigh Borough Council





Approx. Gross Internal Floor Area 971 sq. ft / 90.20 sq. m
Illustration for identification purposes only, measurements are approximate, not to scale.
 Produced by Elements Property

Energy Efficiency Rating		
	Current	Potential
<i>Very energy efficient - lower running costs</i>		
(92+)	A	
(81-91)	B	
(69-80)	C	79
(55-68)	D	
(39-54)	E	
(21-38)	F	
(1-20)	G	9
<i>Not energy efficient - higher running costs</i>		
England & Wales		EU Directive 2002/91/EC

WWW.EPC4U.COM

Agents Note: The sellers of the property have provided the above information to us and we are therefore reliant on them providing the correct information. The floor plan and sizes are to be used as a guide only. Please check room sizes prior to ordering carpets or furniture. If you require confirmation on any particular point for specific purposes please contact our office for further information. If you have other questions about this property, please telephone **01489 789933**

R545 Ravensworth 01670 713330

