



Thomas  
jackson  
ESTATE AGENTS



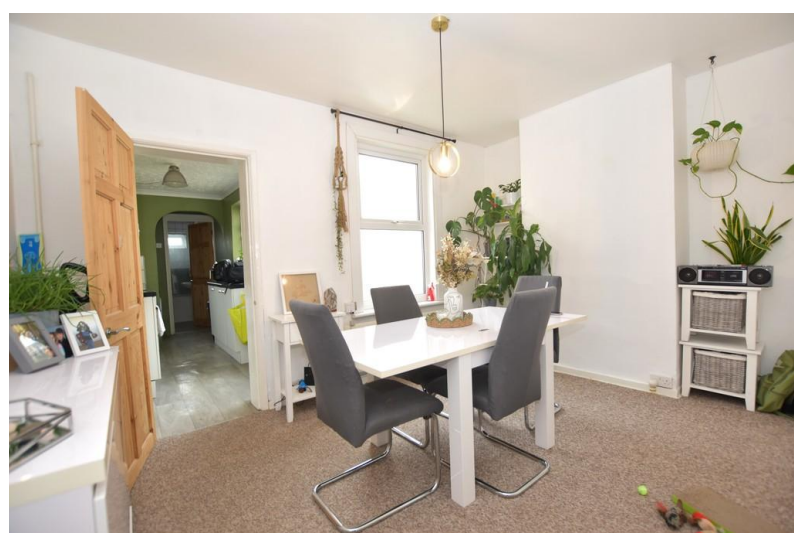
46 Milton Avenue

Margate, CT9 1TS

- Two Double bedrooms
- Chain Free
- Gas Central Heating and
- Double Glazing
- Ideal First Time Buy
- Garden
- Two reception rooms

£220,000

EPC Rating '68'



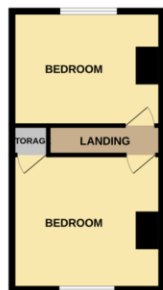




GROUND FLOOR



1ST FLOOR



Whilst every attempt has been made to ensure the accuracy of the floorplan contained here, measurements of doors, windows, rooms and any other items are approximate and no responsibility is taken for any error, omission or mis-statement. This plan is for illustrative purposes only and should be used as such by any



152 Northdown Road  
Cliftonville  
Margate  
Kent  
CT9 2QN

[www.thomasjackson.biz](http://www.thomasjackson.biz)  
01843 221000  
[sales@thomasjackson.biz](mailto:sales@thomasjackson.biz)

Agents Note: Whilst every care has been taken to prepare these particulars, they are for guidance purposes only. All measurements are approximate and for general guidance purposes only and whilst every care has been taken to ensure their accuracy, they should not be relied upon and potential buyers/tenants are advised to recheck the measurements

