



CAMELA LANE

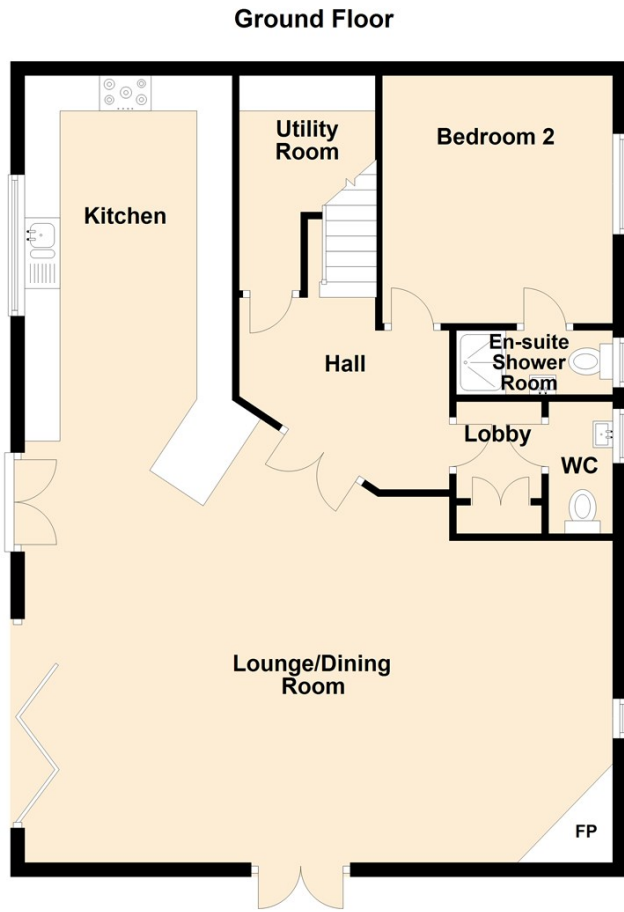
CAMBLESFORTH, YO8 8HA

£790,000
FREEHOLD

Low Farm Stables is a contemporary self build which is located on the outer edge of the village of Camblesforth with panoramic views over open countryside. The property offers four bedroom accommodation which provides very modern living and sits within generous gardens and includes a 16m x 24m barn. Viewing is an absolute must to appreciate this fine property on offer and also the secluded location.

EPC: D





Energy Efficiency Rating		Current	Potential
<i>Very energy efficient - lower running costs</i>			
(92 plus) A			<div style="border: 1px solid black; padding: 5px; width: 40px; margin: 0 auto;">87</div> <div style="border: 1px solid black; padding: 5px; width: 40px; margin: 0 auto; margin-top: 20px;">64</div>
(81-91) B			
(69-80) C			
(55-68) D			
(39-54) E			
(21-38) F			
(1-20) G			
<i>Not energy efficient - higher running costs</i>			
England & Wales		EU Directive 2002/91/EC	

Agents Note: Whilst every care has been taken to prepare these particulars, they are for guidance purposes only. All measurements are approximate and are for general guidance purposes only and whilst every care has been taken to ensure their accuracy, they should not be relied upon and potential buyers/tenants are advised to recheck the measurements

Goole Office Sales
79 Boothferry Road
Goole
East Yorkshire
DN14 6BB

01405 765265
goole@screetons.co.uk
www.screetons.co.uk

