



Plot 11 Watson Drive Eastrington DN14 7QB

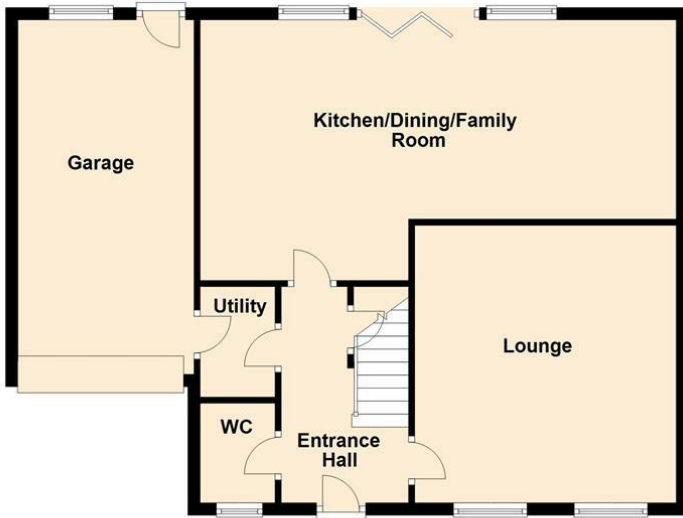
£450,000
FREEHOLD

PLOT 11 - 5 BED DETACHED NEW BUILD IN POPULAR VILLAGE Watson Drive is another exciting development built by well renowned builders Dimmack Brothers Ltd. Located in a peaceful position off Nanrock Close, within the popular village of Eastrington close to Howden and the motorway networks. The development of approximately 30 new homes comprises a mix of townhouses, semi-detached and detached homes and two bungalows. We are delighted to offer to the market Plot 11, which is a 5 bedroom, detached family home, which is nearing completion and briefly comprises, entrance, cloakroom, lounge, kitchen/dining/family room, five bedrooms two with en-suites and a house bathroom. Outside there is a driveway, garage and south facing rear garden. The plot enjoys views to the rear over open fields. The purchaser would have a choice of kitchen, with an allowance of up to £15,000.

EPC:




Ground Floor



First Floor



Energy Efficiency Rating		
	Current	Potential
<i>Very energy efficient - lower running costs</i>		
(92 plus) A		
(81-91) B		
(69-80) C		
(55-68) D		
(39-54) E		
(21-38) F		
(1-20) G		
<i>Not energy efficient - higher running costs</i>		
England & Wales	EU Directive 2002/91/EC 	

Agents Note: Whilst every care has been taken to prepare these particulars, they are for guidance purposes only. All measurements are approximate and are for general guidance purposes only and whilst every care has been taken to ensure their accuracy, they should not be relied upon and potential buyers/tenants are advised to recheck the measurements

Howden Office Sales
 25 Bridgegate
 Howden
 East Yorkshire
 DN14 7AA

01430 431201
 howden@screetons.co.uk
 www.screetons.co.uk

