



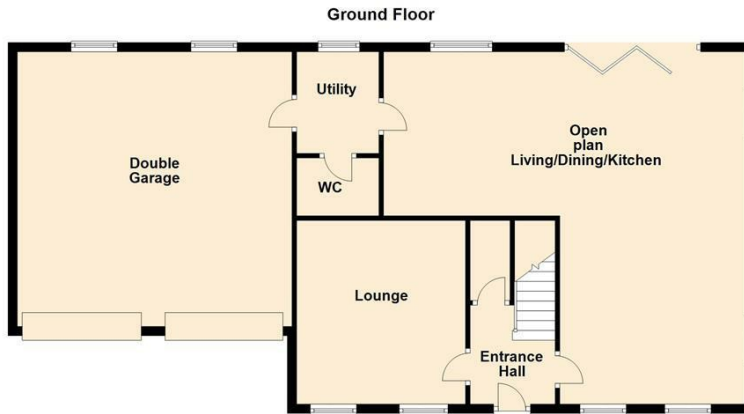
PLOT 20 WATSON DRIVE EASTINGTON, DN14 7YU

£525,000
FREEHOLD

EXECUTIVE, 5 BEDROOM DETACHED NEW BUILD IN POPULAR VILLAGE Watson Drive is another exciting development built by well renowned builders Dimmack Brothers Ltd. Located in a peaceful position off Nanrock Close, within the popular village of Eastington close to Howden and the motorway networks. The development of approximately 30 new homes comprises a mix of townhouses, semi-detached and detached homes and two bungalows. We are delighted to offer to the market Plot 20, which is the largest plot on the site and briefly comprises, entrance hall, lounge, open plan kitchen/dining/family room, utility, cloakroom, master bedroom with en-suite and dressing room, four further bedrooms one with en-suite and a house bathroom. Outside there is a driveway, double garage and rear garden. The purchaser would have a choice of kitchen, with an allowance of up to £15,000, including fitting.

EPC:





Energy Efficiency Rating		
	Current	Potential
Very energy efficient - lower running costs		
(92 plus) A		
(81-91) B		
(69-80) C		
(55-68) D		
(39-54) E		
(21-38) F		
(1-20) G		
Not energy efficient - higher running costs		
England & Wales	EU Directive 2002/91/EC	

Agents Note: Whilst every care has been taken to prepare these particulars, they are for guidance purposes only. All measurements are approximate and are for general guidance purposes only and whilst every care has been taken to ensure their accuracy, they should not be relied upon and potential buyers/tenants are advised to recheck the measurements

Howden Office Sales
25 Bridgegate
Howden
East Yorkshire
DN14 7AA

01430 431201
howden@screetons.co.uk
www.screetons.co.uk

