



Ash Villa Farm Hull Road Offers In The Region Of £575,000 Eastrington DN14 7XL

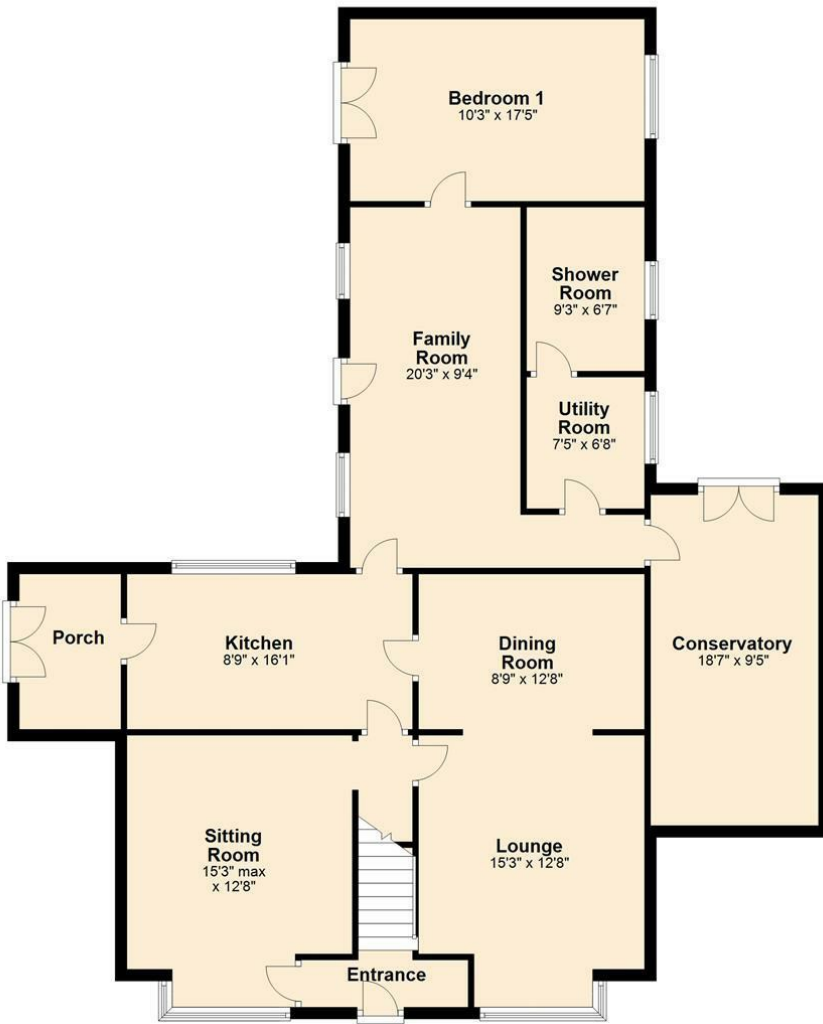
FREEHOLD

Ash Villa Farm is a detached farmhouse located off Hull Road on the edge of the village of Eastrington, approximately 4 miles from Howden and access to J37 of the M62. The property offers generous 5 bedroom accommodation with 4 reception rooms and with the current layout lends itself to proving accommodation for multi generational living. The property occupies a generous and versatile site extending as a whole to approximately 1.2 acres and which includes stabling, workshop, summer house, ponds and good sized vehicular parking and storage. The property and grounds offer much potential for a variety of uses, subject to obtaining the relevant planning consents.

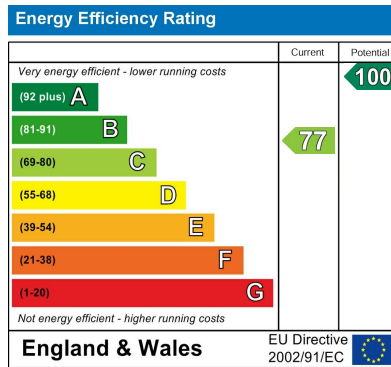
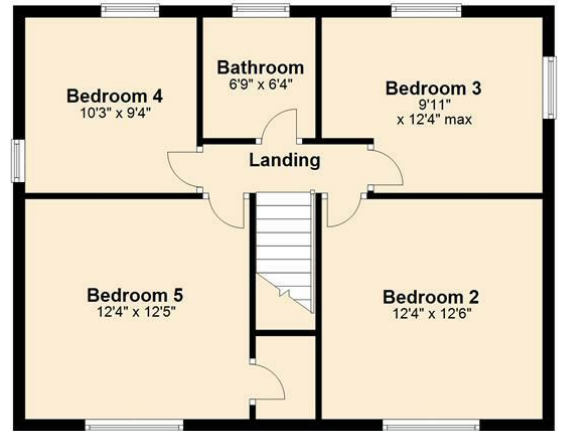
EPC: C



Ground Floor



First Floor



Agents Note: Whilst every care has been taken to prepare these particulars, they are for guidance purposes only. All measurements are approximate and are for general guidance purposes only and whilst every care has been taken to ensure their accuracy, they should not be relied upon and potential buyers/tenants are advised to recheck the measurements

Howden Office Sales
 25 Bridgegate
 Howden
 East Yorkshire
 DN14 7AA

01430 431201
 howden@screetons.co.uk
 www.screetons.co.uk

