



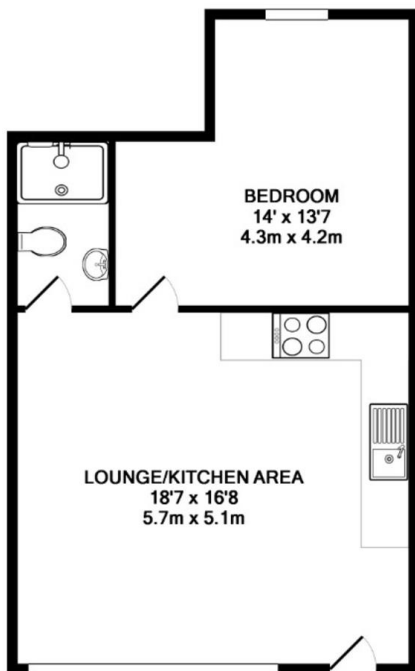
Twenty Twenty House
Skinner Lane, Leeds, LS7 1BB

£107,000



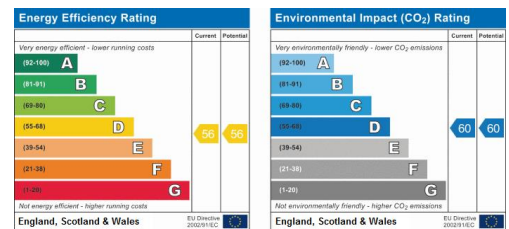
Property Summary

INVESTMENT OPPERTUNITY* *CASH BUYERS ONLY HOP are pleased to present this modern property to market, Ideally located close to the city center in the popular Twenty Twenty development. The property is currently achieving £675 PCM returning an attractive gross rental yield of 7.5% meaning it is a great property for a first-time investor or someone looking to add to their portfolio. The apartment is well located on the ground floor, with its own entrance door and benefits from being one of the largest flats in the complex. The apartment benefits from lots of natural light and neutral décor and briefly comprises of a large double bedroom, shower room and spacious open plan kitchen/ living room. EPC E.



TOTAL APPROX. FLOOR AREA 511 SQ.FT. (47.5 SQ.M.)

Whilst every attempt has been made to ensure the accuracy of the floor plan contained here, measurements of doors, windows, rooms and any other items are approximate and no responsibility is taken for any error, omission, or mis-statement. This plan is for illustrative purposes only and should be used as such by any prospective purchaser. The services, systems and appliances shown have not been tested and no guarantee as to their operability or efficiency can be given
Made with Metropix ©2015



- 1 DOUBLE BEDROOM
- INVESTMENT OPPERTUNITY
- ALLOCATED PARKING SPACE
- FULLY MAINTAINED ROOF TERRACE
- TENANTED AT £675 PCM
- 7.5% GROSS RENATAL YIELD
- MODERN DESIGN
- POPULAR DEVELOPMENT
- TENENTED UNTIL JUNE 2021
- EPC E

Coburg House
St Andrews Court
Leeds
West Yorkshire
LS3 1JY
0113 322 9533

Agents Note: Whilst every care has been taken to prepare these sales particulars, they are for guidance purposes only. All measurements are approximate are for general guidance purposes only and whilst every care has been taken to ensure their accuracy, they should not be relied upon and potential buyers are advised to recheck the measurements