



1 Nightingale Way

Higham Ferrers, Northamptonshire NN10 8PR



Simpson & Weekley

SIX BEDROOM EXECUTIVE HOME Simpson and Weekley are delighted to offer to the market this wonderful detached executive home. Built by David Wilson Homes in 2015 on a small development on the edge of the highly sought after Northamptonshire historical market town of Higham Ferrers. The home offers easy access to lots of local amenities including shops, parks, schools and the always popular Rushden Lakes development. The home is wonderfully presented throughout and boasts ample living accommodation set over three floors and comprising in brief; entrance hallway, lounge, kitchen diner, utility room, study and WC downstairs. The first floor boasts a large master bedroom with en-suite bathroom, three further double bedrooms and a separate family bathroom. The top floor offers an en-suite double bedroom and a sixth double bedroom. The home also benefits from gas central heating and double glazing throughout. Externally there is a private walled rear garden, a wrap around front garden, ample off street parking for several cars and a detached double garage. An internal viewing is highly recommended to fully appreciate everything this amazing home has to offer. EPC Rating F, Council Tax Band B

£675,000



6



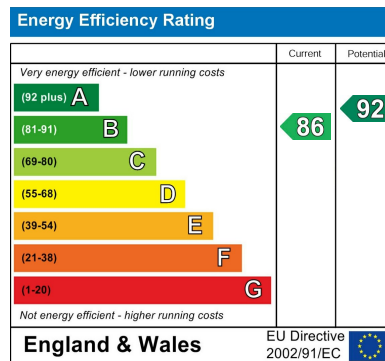
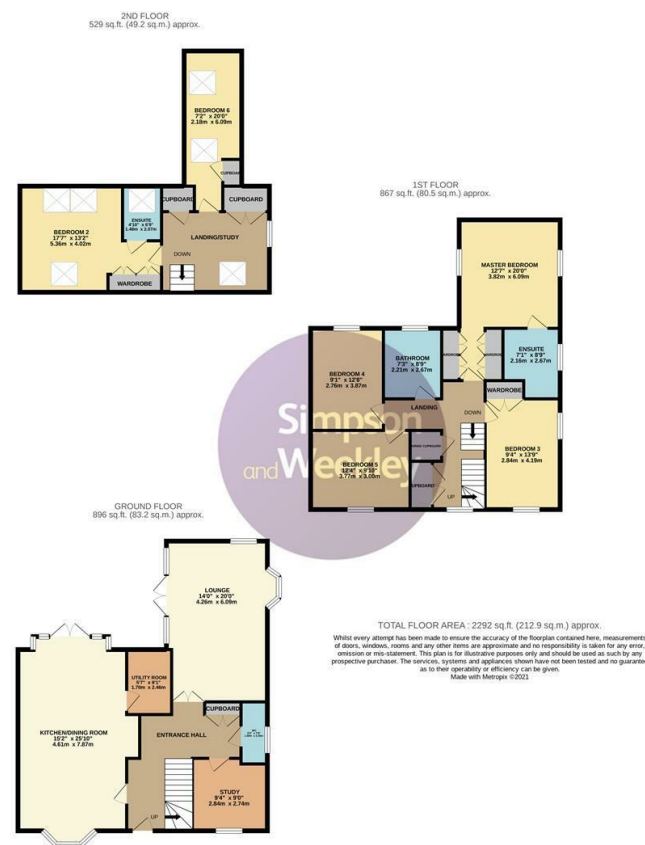
4



3



Simpson & Weekley



When you buy with Simpson and Weekley, you know **you'll be in safe hands**. From the moment you walk through our doors, we'll make you **feel truly welcome**. Our sales consultants and financial advisors will take you through **every step of the process**, offering **free expert advice** along the way, from help choosing the right mortgage and insurance through to finding your conveyancer. And if you need help selling your home too, **with over 20 years of local experience, you can trust us to get you moving**.



**Simpson
& Weekley**

Making Every
Journey Personal



01933 418917

rushden@simpsonandweekley.co.uk

<https://www.simpsonandweekley.co.uk/>

30 High Street, Rushden, Northants, NN10 0PW