



111 Bradshaw Way
Irchester, NN29 7DW



Simpson & Weekley

FIELD VIEWS ***VILLAGE LOCATION*** Simpson and Weekley are delighted to introduce to the market this fantastic three-bedroom detached family home. Ideally located in the heart of the popular Northamptonshire village of Irchester. The home offers easy access to lots of local amenities including shops, schools, country parks and the always popular Rushden Lakes development. The property has been owned by the current owners for over 40 years and the home boasts ample living accommodation set over two floors and comprising in brief; entrance porch, a large lounge, kitchen diner and utility room downstairs. The first floor boasts a large master bedroom with built in wardrobes and views over open fields to the rear of the home. A second double bedroom and a single third bedroom. concluding the internal accommodation is a re-fitted family shower room. The property also benefits from gas central heating and double glazing throughout. Externally there is a beautiful fully enclosed private rear garden with two patio seating areas and backing onto open fields. To the front of the home is a front garden, private driveway and a single garage. An internal viewing is highly recommended to fully appreciate everything this fantastic family home. EPC Rating D, Council Tax Band C

£350,000



3



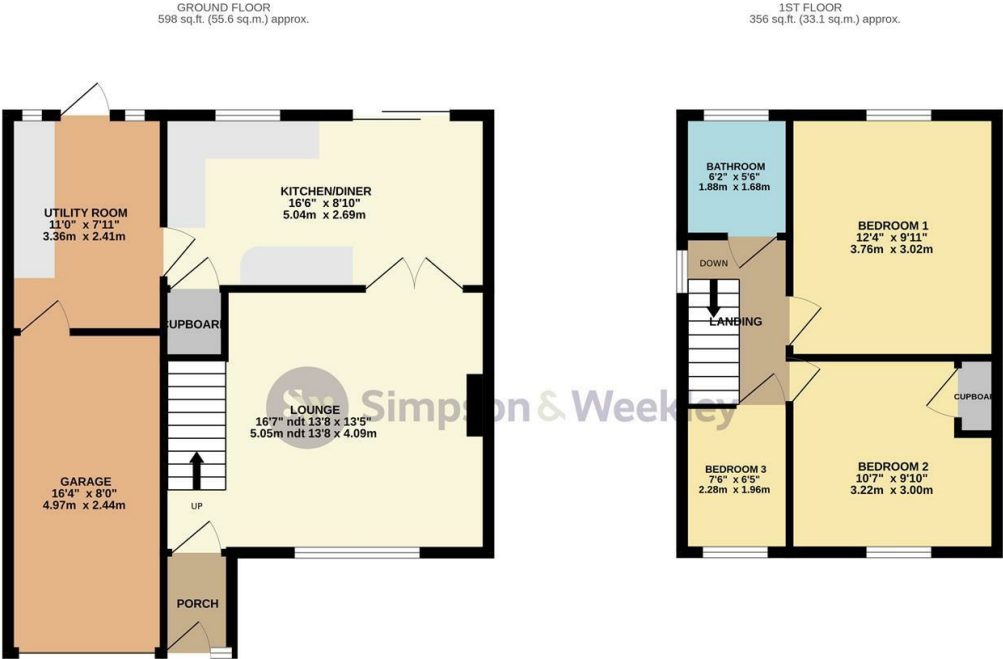
1



2



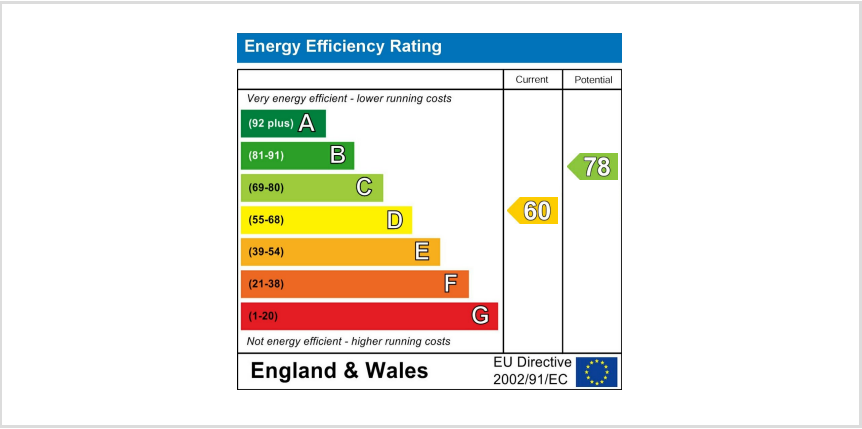
Simpson & Weekley



TOTAL FLOOR AREA : 954 sq.ft. (88.6 sq.m.) approx.

Whilst every attempt has been made to ensure the accuracy of the floorplan contained here, measurements of doors, windows, rooms and any other items are approximate and no responsibility is taken for any error, omission or mis-statement. This plan is for illustrative purposes only and should be used as such by any prospective purchaser. The services, systems and appliances shown have not been tested and no guarantee as to their operability or efficiency can be given.

Made with Metropix ©2024



When you buy with Simpson and Weekley, you know **you'll be in safe hands**. From the moment you walk through our doors, we'll make you **feel truly welcome**. Our sales consultants and financial advisors will take you through **every step of the process**, offering **free expert advice** along the way, from help choosing the right mortgage and insurance through to finding your conveyancer. And if you need help selling your home too, **with over 20 years of local experience, you can trust us to get you moving**.



**Simpson
& Weekley**

Making Every
Journey Personal



01933 418917

rushden@simpsonandweekley.co.uk

<https://www.simpsonandweekley.co.uk/>

30 High Street, Rushden, Northants, NN10 0PW