

Guide Price

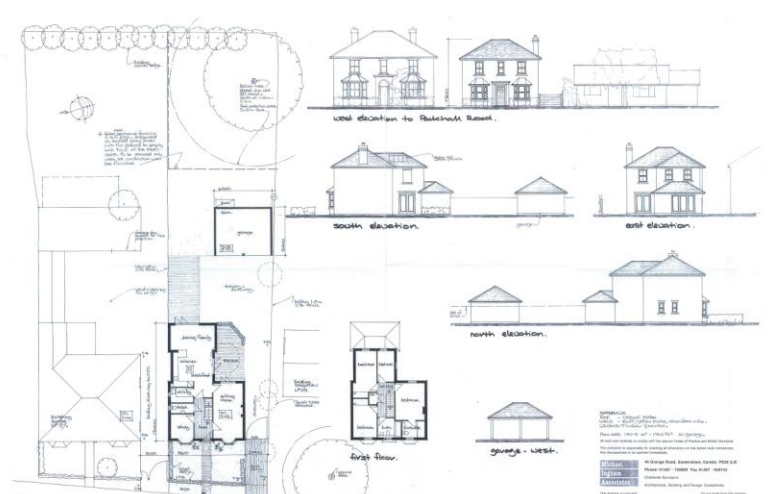
**£155,000**

Building Plot, 27 Parkhall Road, Somersham, Huntingdon,



**To arrange a viewing call us now on 01480 388888**

Ellis Winters are pleased to offer this BUILDING PLOT which has permission to construct a detached home with double garage. With its period styling, good size garden and 1512sq ft of floor area comprising sitting room, study, kitchen/family room, utility, cloakroom, bathroom, en suite and four bedrooms the finished build offers much to admire. For more information or to arrange a viewing please call Ellis Winters.



**elliswinters&co**  
**welcome to better**

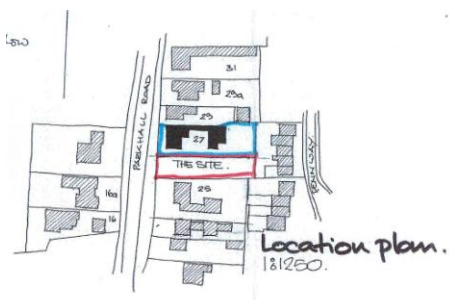
Guide Price

**£155,000**

Building Plot, 27 Parkhall Road, Somersham, Huntingdon,

To view full details of planning permission:

Plans are available to view on the local authority website  
[www.huntingdonshire.gov.uk](http://www.huntingdonshire.gov.uk) using the following planning reference 15/00232/FUL



Ellis Winters has not tested any apparatus, equipment fitting or services and so cannot verify that they are in working order. The buyer is advised to obtain verification from their solicitor or surveyor. Floor plans are for representational purposes only and are not to scale.

Ellis Winters & Co 17 White Hart Court, St Ives, Cambridgeshire, PE27 5EA  
Tel: 01480 388888 Email: [info@elliswinters.co.uk](mailto:info@elliswinters.co.uk) [www.elliswinters.co.uk](http://www.elliswinters.co.uk)

**elliswinters&co**  
**welcome to better**

