

Ground Floor

Porch

Hall

Lounge
4.44m (14'7") max x 4.17m (13'8")

Dining Room
2.92m (9'7") x 2.73m (9')

Kitchen
2.92m (9'7") x 2.54m (8'4")

Utility Room
3.38m (11'1") x 2.52m (8'3")

WC

First Floor

Landing

Bedroom 1
4.18m (13'8") x 3.38m (11'1")

Bedroom 2
3.38m (11'1") x 2.96m (9'9")

Bedroom 3
2.54m (8'4") x 1.99m

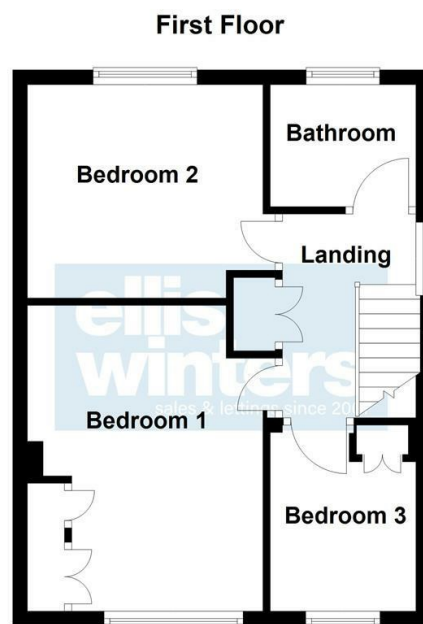
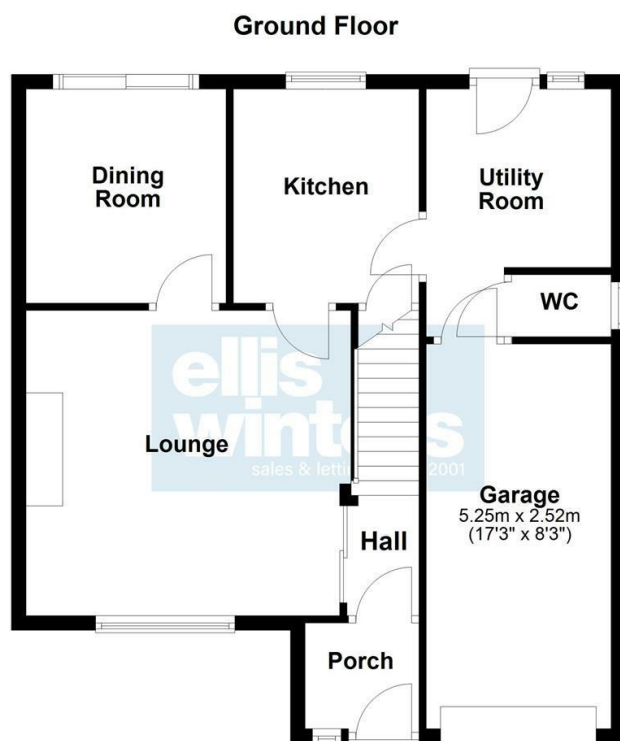
Bathroom

Outside

To the front of the property, there is a garden that is laid mainly to lawn with mature borders and a gate to the side. There is a driveway that leads to a single garage. The garage has an up-and-over door, with power and light connected, and a personal door to the rear.

To the rear of the property, an enclosed garden, laid mainly to lawn, with mature well-stocked borders, a paved patio seating area, and a garden shed.

Further Information
Tenure: Freehold
Council Tax Band: D
EPC Rating: D



Agents Note: Whilst every care has been taken to prepare these particulars, they are for guidance purposes only. All measurements are approximate and are for general guidance purposes only and whilst every care has been taken to ensure their accuracy, they should not be relied upon and potential buyers/tenants are advised to recheck the measurements

ellis winters
sales & lettings since 2001

OFFICE ADDRESS

14 Market Hill
St Ives
Cambridgeshire
PE27 5AL

OFFICE DETAILS

01480 388888
infostives@elliswinters.co.uk
www.elliswinters.co.uk

ellis winters
sales & lettings since 2001

£389,995

WESTBURY ROAD

ST. IVES, PE27 6DN



PROPERTY SUMMARY

An established detached family home, in a sought-after cul de sac location, a short distance from St Ives town centre. This superb home is a short walk to The Thicket pathway and riverside walks, the leisure centre, and both primary and secondary schools. The property features two reception rooms, a modern kitchen, a utility room and a WC. There are three bedrooms, a family bathroom, along with an enclosed rear garden, a driveway and a single garage. Offered with no onward chain.

3



1



2

