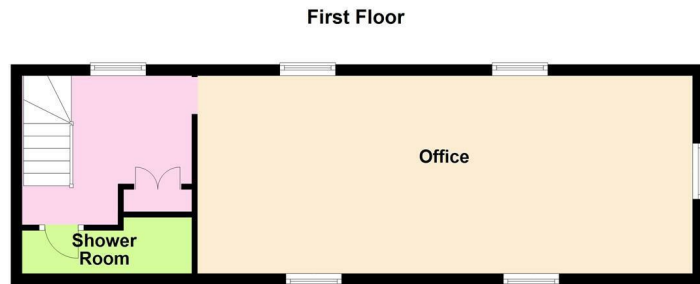
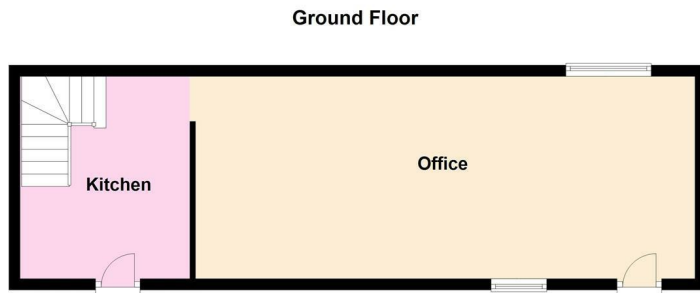




£995 Per Calendar Month
High Street
Somersham, PE28 3JB



Total area: approx. 87.4 sq. metres (940.3 sq. feet)

We are proud to present this commercial property that dates back to the 1800's situated on the High Street of the thriving village of Somersham. This property offers two large office spaces, kitchen and a shower room. There is parking to the front of the property for around three cars. Available in June with a deposit of £1200

Ground Floor

Office
8.97m (29'5") x 3.63m (11'11")

Kitchen

3.57m (11'9") x 3.05m (10')

First Floor

Landing


Shower Room


Office
8.99m (29'6") x 3.60m (11'10")


Further Information

Length of tenancy: Long Term
Council Tax: N/A
EPC Rating: TBC

Agents Note
Please note that all photos were taken before current tenant moved into the property.

0 

1 

2 



Agents Note: Whilst every care has been taken to prepare these particulars, they are for guidance purposes only. All measurements are approximate and are for general guidance purposes only and whilst every care has been taken to ensure their accuracy, they should not be relied upon and potential buyers/tenants are advised to recheck the measurements

ellis winters
sales & lettings since 2001

OFFICE ADDRESS

14 Market Hill
St Ives
Cambridgeshire
PE27 5AL

OFFICE DETAILS

01480 388889
infostives@elliswinters.co.uk
www.elliswinters.co.uk