

Ground Floor

Entrance Hall

Lounge
4.18m (13'9") x 3.63m (11'11")

Kitchen/Dining Room
5.56m (18'3") x 3.53m (11'7")
Integrated washing machine, and under stairs storage area.

First Floor

Landing

Airing Cupboard

Bedroom 1
4.06m (13'4") x 3.66m (12')
Fitted wardrobes

Bedroom 2
3.66m (12') x 3.13m (10'3")
Fitted wardrobes

Bedroom 3
2.72m (8'11") x 2.44m (8')

Shower Room

Outside

To the front of the property is a gravel and hard stand driveway that leads to a single garage. The garage features an up-and-over door, power and light

connected, with a personal door and window. There is also gated access to the side.

To the rear, an enclosed split-level south facing garden, with paved patio seating areas, laid mainly to lawn with established and mature tree, shrubs, and flower beds.

Further Information

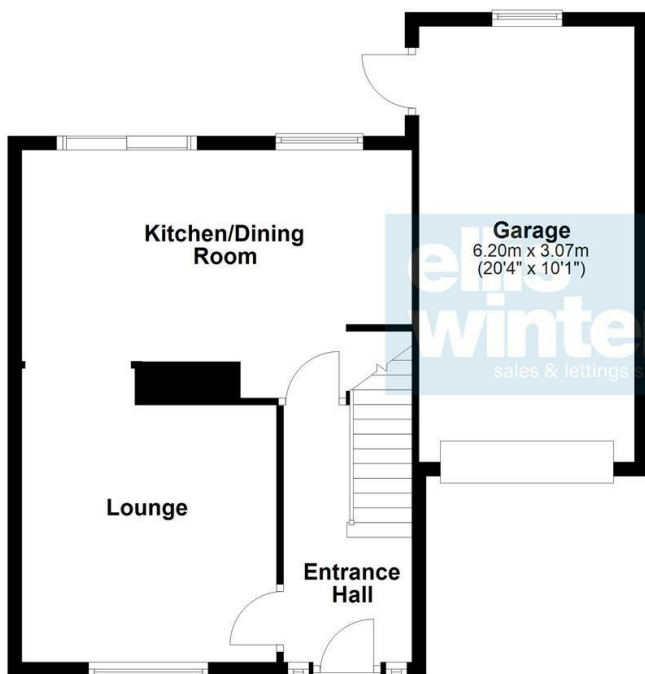
Tenure: Freehold

Council Tax Band: C

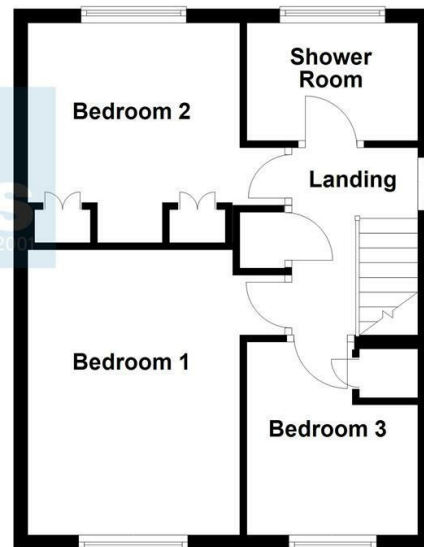
EPC Rating: C

Heating Type: Gas Central Heating

Ground Floor



First Floor



ellis winters
sales & lettings since 2001

OFFICE ADDRESS

14 Market Hill
St Ives
Cambridgeshire
PE27 5AL

OFFICE DETAILS

01480 388888
infostives@elliswinters.co.uk
www.elliswinters.co.uk

Agents Note: Whilst every care has been taken to prepare these particulars, they are for guidance purposes only. All measurements are approximate and are for general guidance purposes only and whilst every care has been taken to ensure their accuracy, they should not be relied upon and potential buyers/tenants are advised to recheck the measurements



ellis winters
sales & lettings since 2001

OFFERS IN THE REGION OF

£300,000

SHAKESPEARE ROAD

ST. IVES, PE27 6TT

PROPERTY SUMMARY

An established and well-presented, semi-detached home in a popular location. This superb property is walking distance from schools, local amenities, and public transport links and guided busway. The property features a kitchen/dining room, a lounge, three bedrooms, and a four piece bathroom. There is a driveway, a single garage, and an enclosed rear garden. Offered with no onward chain.

3



1



1

