



Main Road  
Morton Alferton





## Property Description

Hall and Benson are delighted to offer for sale this two bedroom terraced property located in the popular village of Morton. Being located within a semi-rural location having two village pubs, local shops, hairdressers and primary school. The well presented accommodation briefly comprises; lounge, dining room and kitchen. To the first floor there is a landing, two double bedrooms and a family bathroom. The front of the home has a small forecourt garden and the rear of the home enjoys a fully enclosed rear garden mainly laid to lawn backing onto fields.

### Lounge

The home is entered via a UPVC front door into the lounge. Having a UPVC double glazed window to the front elevation, gas central heating radiator, laminate flooring, ceiling light and feature fireplace.

### Dining Room

Having a UPVC double glazed window to the rear elevation, gas central heating radiator, laminate flooring and ceiling light.

### Kitchen

Fitted with a matching range of wall and base units incorporating a sink drainer unit, electric oven with gas hob over and extractor fan. There is laminate flooring, UPVC door to the rear garden and UPVC double glazed window to the rear.

## First Floor

### Landing

With loft hatch access, gas central heating radiator and doors leading to;

### Bedroom One

With a UPVC double glazed window to the front elevation, gas central heating radiator, carpeted flooring, ceiling light and over stairs storage cupboard.

### Bedroom Two

With a UPVC double glazed window to the rear elevation, gas central heating radiator, carpeted flooring and ceiling light.

## Bathroom

Fitted with a white three piece suite comprising of panel bath with shower over, low level W/C with sink inset vanity unit, wood effect vinyl flooring, gas central heating radiator, ceiling light and UPVC double glazed window to the rear elevation.

## Outside

The front of the home enjoys a forecourt garden. The rear of the home has a fully enclosed rear garden mainly laid to lawn with

paved yard area.

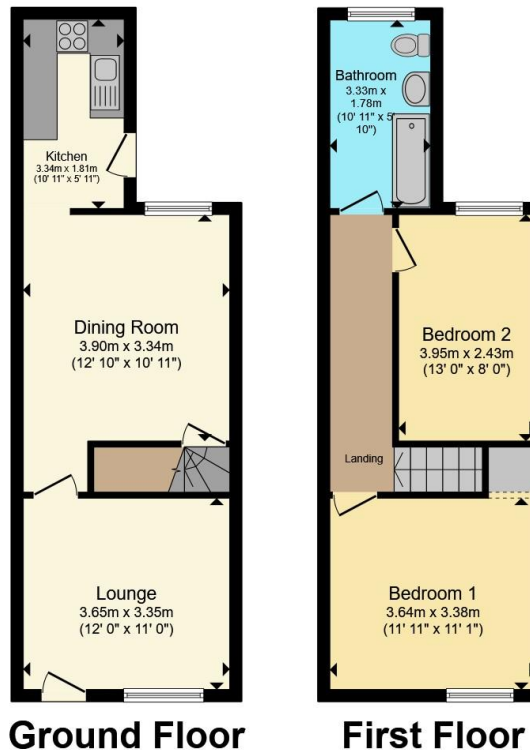












Total floor area 73.3 m<sup>2</sup> (789 sq.ft.) approx

This floor plan is for illustrative purposes only. It is not drawn to scale. Any measurements, floor areas (including any total floor area), openings and orientation are approximate. No details are guaranteed, they cannot be relied upon for any purpose and they do not form part of any agreement. No liability is taken for any error, omission or misstatement. A party must rely upon its own inspection(s). Powered by [www.propertybox.io](http://www.propertybox.io)



To view this property please contact Hall & Benson on

**T 01773 521771**  
**E [alfreton@hallandbenson.co.uk](mailto:alfreton@hallandbenson.co.uk)**

22A High Street  
 ALFRETON DE55 7BN

EPC Rating: E Council Tax  
 Band: A

**check out more properties at [hallandbenson.co.uk](http://hallandbenson.co.uk)**

Tenure: Freehold



1. MONEY LAUNDERING REGULATIONS Intending purchasers will be asked to produce identification documentation at a later stage and we would ask for your co-operation in order that there will be no delay in agreeing the sale. 2. These particulars do not constitute part or all of an offer or contract. 3. The measurements indicated are supplied for guidance only and as such must be considered incorrect. Potential buyers are advised to recheck measurements before committing to any expense. 4. We have not tested any apparatus, equipment, fixtures, fittings or services and it is in the buyers interest to check the working condition of any appliances.

Hall & Benson is a trading name of Connells Residential which is registered in England and Wales under company number 1489613, Registered Office is Cumbria House, 16-20 Hockliffe Street, Leighton Buzzard, Bedfordshire, LU7 1GN. VAT Registration Number is 500 2481 05.

**See all our properties at [www.hallandbenson.co.uk](http://www.hallandbenson.co.uk) | [www.rightmove.co.uk](http://www.rightmove.co.uk) | [www.zoopla.co.uk](http://www.zoopla.co.uk)**

Property Ref: ALF103929 - 0002