



Land At Parkside
Somercotes Alfreton

Land At Parkside Somercotes Alfreton DE55 4LA

for sale
£650,000



Property Description

We anticipate that the final units will have a gross development value in the region of £3,100,000.

The closest railway station is located in Alfreton which is approximately 1.8 miles away, with the larger cities of both Derby and Nottingham within easy reach.

East Midlands Airport is about 27 miles South of the site.

Email: geoff.splevings@connells.co.uk for Further Details

We anticipate that the final units will have a gross development value in the region of £3,100,000.

The closest railway station is located in Alfreton which is approximately 1.8 miles away, with the larger cities of both Derby and Nottingham within easy reach.

East Midlands Airport is about 27 miles South of the site.

Email: geoff.splevings@connells.co.uk for Further Details

We anticipate that the final units will have a gross development value in the region of £3,100,000.

The closest railway station is located in Alfreton which is approximately 1.8 miles away, with the larger cities of both Derby and Nottingham within easy reach.

East Midlands Airport is about 27 miles South

of the site.

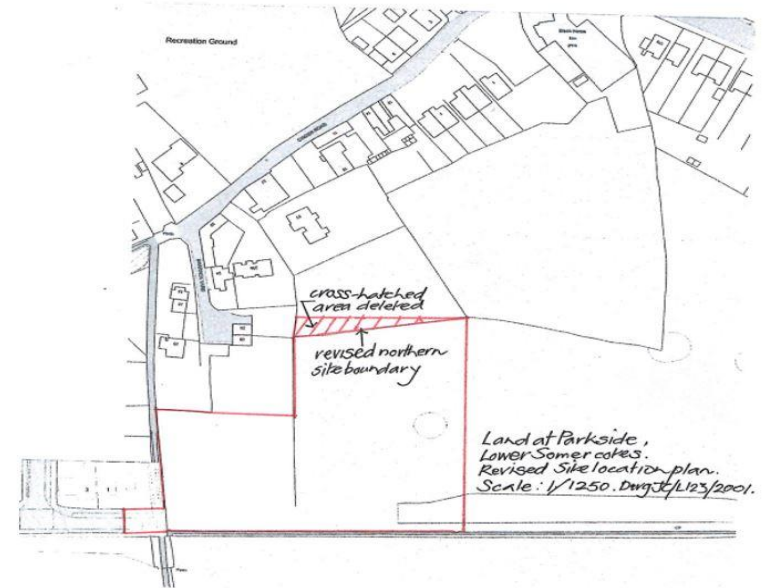
Email: geoff.splevings@connells.co.uk for Further Details

We anticipate that the final units will have a gross development value in the region of £3,100,000.

The closest railway station is located in Alfreton which is approximately 1.8 miles away, with the larger cities of both Derby and Nottingham within easy reach.

East Midlands Airport is about 27 miles South of the site.

Email: geoff.splevings@connells.co.uk for Further Details





To view this property please contact Hall & Benson on

T 01773 521771
E alfreton@hallandbenson.co.uk

22A High Street
ALFRETON DE55 7BN

EPC Rating: Exempt

view this property online [hallandbenson.co.uk/Property/ALF103526](https://www.hallandbenson.co.uk/Property/ALF103526)

Tenure: Freehold



1. MONEY LAUNDERING REGULATIONS Intending purchasers will be asked to produce identification documentation at a later stage and we would ask for your co-operation in order that there will be no delay in agreeing the sale. 2. These particulars do not constitute part or all of an offer or contract. 3. The measurements indicated are supplied for guidance only and as such must be considered incorrect. Potential buyers are advised to recheck measurements before committing to any expense. 4. We have not tested any apparatus, equipment, fixtures, fittings or services and it is in the buyers interest to check the working condition of any appliances.

Hall & Benson is a trading name of Connells Residential which is registered in England and Wales under company number 1489613, Registered Office is Cumbria House, 16-20 Hockliffe Street, Leighton Buzzard, Bedfordshire, LU7 1GN. VAT Registration Number is 500 2481 05.

See all our properties at www.hallandbenson.co.uk | www.rightmove.co.uk | www.zoopla.co.uk

Property Ref: ALF103526 - 0003