



Raven Close
Riddings Alfreton

Raven Close Riddings Alfretton DE55 4DP

for sale offers over
£210,000



Property Description

Hall and Benson are delighted to offer to the market this three bedroom detached family home set in a popular residential area of Riddings. The accommodation briefly comprises of entrance hall, Lounge and Dining Kitchen to the Ground Floor and Three Bedrooms and Family Bathroom to the First Floor. Outside there is a good sized drive way to the front with double gates providing vehicular access to the side. To the rear of the home is a block paved enclosed rear garden which is south westerly facing.

Offered for sale with no upward chain.

Entrance Hall

Enter the home into hall with stairs rising to the first floor and door to the kitchen and lounge

Lounge

16' 6" x 11' 6" (5.03m x 3.51m)

With bay fronted window to the front elevation, radiator, ceiling light

Dining Kitchen

14' 9" x 9' 6" (4.50m x 2.90m)

Fitted with an attractive and modern kitchen with a range of wall and base units, sink with mixer tap over, new built in electric oven and hob with extractor fan over, ceiling lights, space for washing machine and free standing fridge freezer, with double glazed patio doors to the rear.

Landing

Bedroom One

14' 9" x 9' 2" (4.50m x 2.79m)

Two double glazed windows to the front elevation, radiator, ceiling light.

Bedroom Two

8' 9" x 8' 5" (2.67m x 2.57m)

Double glazed window to the rear elevation, radiator, ceiling light.

Bedroom Three

8' 5" x 5' 8" (2.57m x 1.73m)

Double glazed window to the rear elevation, radiator, ceiling light.

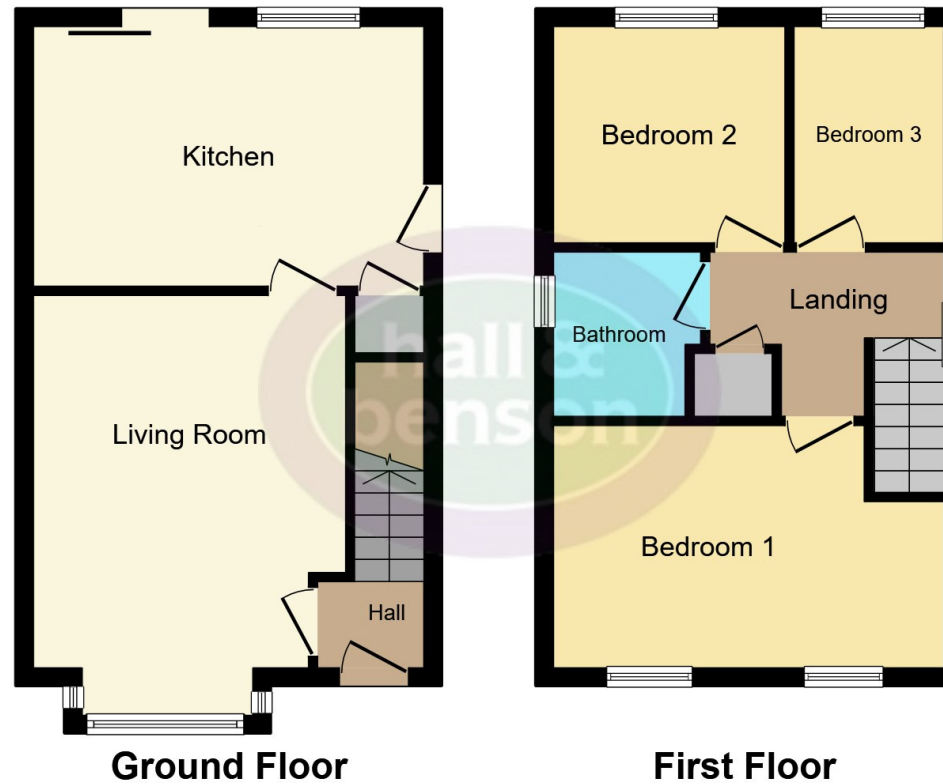
Bathroom

Fitted with a three piece suite comprising bath with shower over, glass shower screen, wash hand basin and WC.









This floor plan is for illustrative purposes only. It is not drawn to scale. Any measurements, floor areas (including any total floor area), openings and orientation are approximate. No details are guaranteed, they cannot be relied upon for any purpose and they do not form part of any agreement. No liability is taken for any error, omission or misstatement. A party must rely upon its own inspection(s). Powered by www.focalagent.com

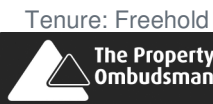
To view this property please contact Hall & Benson on

T 01773 521771
E alfreton@hallandbenson.co.uk

22A High Street
 ALFRETON DE55 7BN

EPC Rating: D

view this property online hallandbenson.co.uk/Property/ALF102820



1. MONEY LAUNDERING REGULATIONS Intending purchasers will be asked to produce identification documentation at a later stage and we would ask for your co-operation in order that there will be no delay in agreeing the sale. 2. These particulars do not constitute part or all of an offer or contract. 3. The measurements indicated are supplied for guidance only and as such must be considered incorrect. Potential buyers are advised to recheck measurements before committing to any expense. 4. We have not tested any apparatus, equipment, fixtures, fittings or services and it is in the buyers interest to check the working condition of any appliances.

Hall & Benson is a trading name of Connells Residential which is registered in England and Wales under company number 1489613, Registered Office is Cumbria House, 16-20 Hockliffe Street, Leighton Buzzard, Bedfordshire, LU7 1GN. VAT Registration Number is 500 2481 05.

See all our properties at www.hallandbenson.co.uk | www.rightmove.co.uk | www.zoopla.co.uk

Property Ref: ALF102820 - 0004