

for sale

£45,000 Leasehold



Kentish House Parham Road Canterbury CT1 1LQ

****ATTENTION INVESTORS**** One Bedroom STUDENT POD located within the student village of Parham Road. This pod has secure card access and includes a SHOWER ROOM with access to a communal kitchen and social living area. NO ONWARD CHAIN!



Residential Sales & Lettings | Mortgage Services |
Conveyancing | Surveyors | Land & New Homes

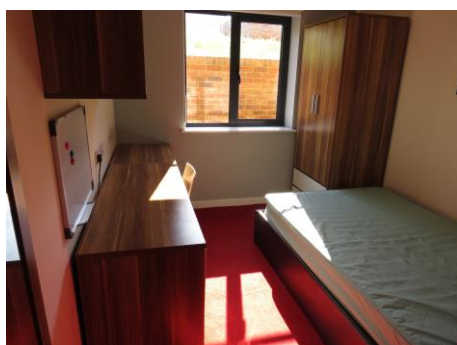
Property Details

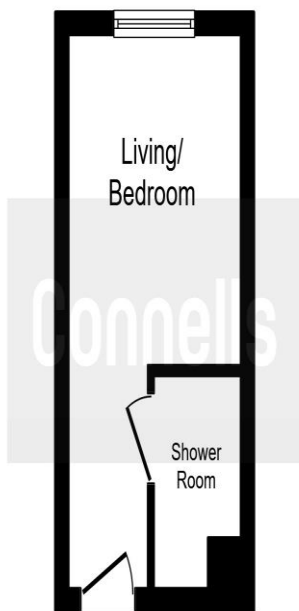
Living Area / Bedroom 16' 1" x 8' 3" (4.90m x 2.51m)

Door from the communal hallway, carpeted room with double glazed window to the side.

En Suite Shower Room

Shower room, fully tiled with shower cubicle, low level w.c and wash hand basin.





Floor Plan

This floor plan is for illustrative purposes only. It is not drawn to scale. Any measurements, floor areas (including any total floor area), openings and orientation are approximate. No details are guaranteed, they cannot be relied upon for any purpose and they do not form part of any agreement. No liability is taken for any error, omission or misstatement. A party must rely upon its own inspection(s).
Plan produced for Connells. Powered by www.localagent.com

directions to this property:

Leaving Canterbury on the A28 towards Sturry and Ramsgate, follow on for Sturry Road. Turn left onto Parham Road.

To view this property please contact Connells on

T 01227 764 720
E canterbury@connells.co.uk

77 Castle Street
CANTERBURY CT1 2QD

Tenure: Leasehold

EPC Rating: Exempt

Property Ref: CBY404178 - 0006

Lease details are currently being compiled. For further information please contact the branch. Please note additional fees could be incurred for items such as leasehold packs.

1. MONEY LAUNDERING REGULATIONS Intending purchasers will be asked to produce identification documentation at a later stage and we would ask for your co-operation in order that there will be no delay in agreeing the sale. 2. These particulars do not constitute part or all of an offer or contract. 3. The measurements indicated are supplied for guidance only and as such must be considered incorrect. Potential buyers are advised to recheck measurements before committing to any expense. 4. We have not tested any apparatus, equipment, fixtures, fittings or services and it is in the buyers interest to check the working condition of any appliances.