



Not for marketing purposes INTERNAL USE ONLY

St. Martins Road
Canterbury



Property Description

St. Martins offers 5 bedrooms with plenty of space for storage and living. It also provides a contemporary kitchen which leads out onto a downstairs shower room and conservatory. Allowing for lots of natural light from the garden. There is also a spacious living room and front bedroom. Upstairs, you will find 4 well-proportioned bedrooms and a family bathroom. Currently being sold with tenants in SITU until June 2026.

Living Room

11' 11" x 11' 9" (3.63m x 3.58m)

Bedroom 1

11' 6" x 14' 6" (3.51m x 4.42m)

Kitchen

9' 5" x 12' 7" (2.87m x 3.84m)

Conservatory

9' 5" x 8' 11" (2.87m x 2.72m)

Bedroom 2

6' 11" x 11' 8" (2.11m x 3.56m)

Bedroom 3

7' 7" x 11' 8" (2.31m x 3.56m)

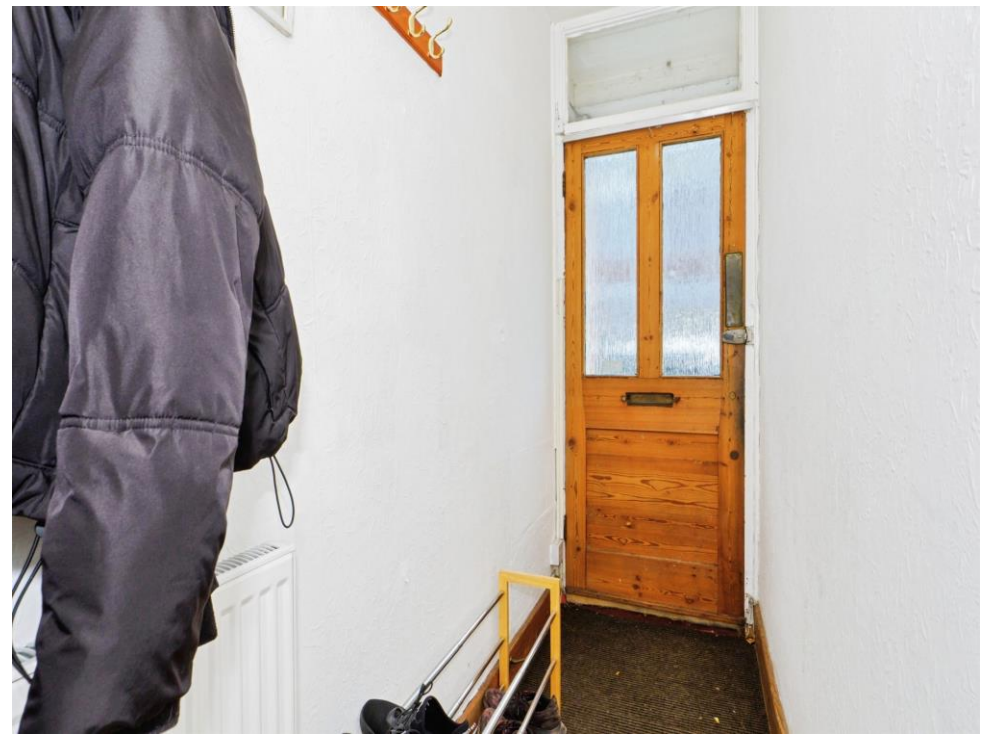
Bedroom 4

9' 5" x 11' 11" (2.87m x 3.63m)

Bedroom 5

9' 5" x 9' 10" (2.87m x 3.00m)









This floor plan is for illustrative purposes only. It is not drawn to scale. Any measurements, floor areas (including any total floor area), openings and orientation are approximate. No details are guaranteed, they cannot be relied upon for any purpose and they do not form part of any agreement. No liability is taken for any error, omission or misstatement. A party must rely upon its own inspection(s). Powered by www.focalagent.com

To view this property please contact Connells on

T 01227 764 720
E canterbury@connells.co.uk

29-30 Watling Street
 CANTERBURY CT1 2UD

EPC Rating: C Council Tax
 Band: C

Tenure: Freehold

check out more properties at connells.co.uk



1. MONEY LAUNDERING REGULATIONS Intending purchasers will be asked to produce identification documentation at a later stage and we would ask for your co-operation in order that there will be no delay in agreeing the sale. 2. These particulars do not constitute part or all of an offer or contract. 3. The measurements indicated are supplied for guidance only and as such must be considered incorrect. Potential buyers are advised to recheck measurements before committing to any expense. 4. We have not tested any apparatus, equipment, fixtures, fittings or services and it is in the buyers interest to check the working condition of any appliances.

Connells Residential is registered in England and Wales under company number 1489613, Registered Office is Cumbria House, 16-20 Hockliffe Street, Leighton Buzzard, Bedfordshire, LU7 1GN. VAT Registration Number is 500 2481 05.

See all our properties at www.connells.co.uk | www.rightmove.co.uk | www.zoopla.co.uk

Property Ref: CBY406643 - 0002