



Not for marketing purposes INTERNAL USE ONLY

Colmanton Grove
Sholden Deal

Colmanton Grove Sholden Deal CT14 0FF

for sale guide price
£300,000



Property Description

In a sought-after location, Colmanton Grove presents an exceptional opportunity to acquire a charming and well maintained 3-bedroom home. This property boasts a brick-built carport and driveway fit for multiple cars, providing secure off-street parking. The low-maintenance garden is perfect for those seeking a peaceful outdoor space without the demand of extensive upkeep.

Upon entering, you will find an abundance of natural light. The modern kitchen is equipped with integrated appliances and sleek black worktops. The living room is the heart of the home due to the space, which also features French doors leading out into the garden. Upstairs, you will find 3 well proportioned bedrooms. Both double bedrooms featuring built in wardrobes, perfect for maximising space. This property is perfect for those seeking a stylish and easy-to manage home in a desirable location.

Bathroom

Kitchen

8' x 10' (2.44m x 3.05m)

Lounge/Diner

14' x 15' (4.27m x 4.57m)

W/C

Bedroom One

8' 1" x 11' 1" (2.46m x 3.38m)

Bedroom Two

8' 1" x 9' 3" (2.46m x 2.82m)

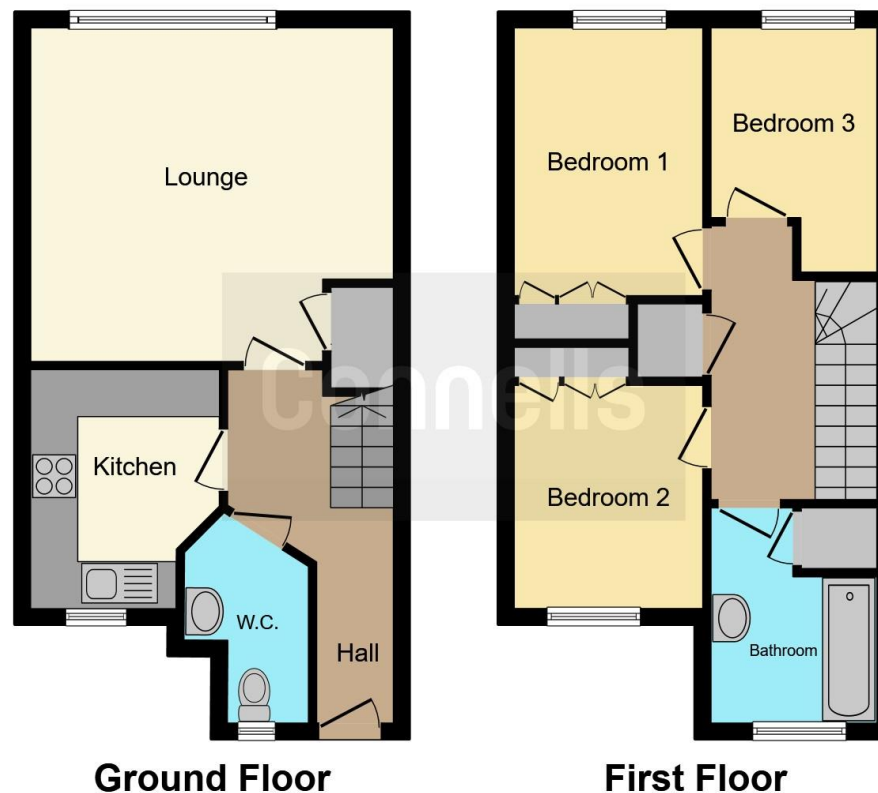
Bedroom Three

6' 8" x 10' 1" (2.03m x 3.07m)









This floor plan is for illustrative purposes only. It is not drawn to scale. Any measurements, floor areas (including any total floor area), openings and orientation are approximate. No details are guaranteed, they cannot be relied upon for any purpose and they do not form part of any agreement. No liability is taken for any error, omission or misstatement. A party must rely upon its own inspection(s). Powered by www.focalagent.com

To view this property please contact Connells on

T 01227 764 720
E canterbury@connells.co.uk

29-30 Watling Street
 CANTERBURY CT1 2UD

EPC Rating: Awaited
 Council Tax Band: C

Tenure: Freehold

check out more properties at connells.co.uk



1. MONEY LAUNDERING REGULATIONS Intending purchasers will be asked to produce identification documentation at a later stage and we would ask for your co-operation in order that there will be no delay in agreeing the sale. 2. These particulars do not constitute part or all of an offer or contract. 3. The measurements indicated are supplied for guidance only and as such must be considered incorrect. Potential buyers are advised to recheck measurements before committing to any expense. 4. We have not tested any apparatus, equipment, fixtures, fittings or services and it is in the buyers interest to check the working condition of any appliances.

Connells Residential is registered in England and Wales under company number 1489613, Registered Office is Cumbria House, 16-20 Hockliffe Street, Leighton Buzzard, Bedfordshire, LU7 1GN. VAT Registration Number is 500 2481 05.

See all our properties at www.connells.co.uk | www.rightmove.co.uk | www.zoopla.co.uk

Property Ref: CBY406559 - 0002