



Not for marketing purposes INTERNAL USE ONLY

Marlowe Place Dover Street
Canterbury



Property Description

SHEARED OWNERSHIP Price is for 50% share.

Marlowe Place offers a stylish and contemporary 2 bedroom apartment that embodies modern living. Located in a vibrant neighbourhood, this residence features an open-plan living area with balcony, large windows allowing natural light to fill the space, highlighting the sleek design and high-quality finishes throughout. The well-appointed kitchen is equipped with modern appliances and ample storage, perfect for both casual dining and entertaining. Both bedrooms are generously sized with access to a second balcony. The apartment also benefits from a family bathroom with shower over the bath. Residents can enjoy allocated parking and use of a lift. With close proximity to local shops, cafes, and transportation links, Marlowe Place offers an ideal home for professionals and families alike, providing the perfect blend of comfort and convenience in a sought-after area. Price is for 50% share.

Shower over bath, hand wash basin, WC and extractor fan.

Longe/Diner?kitchen

16' 4" x 21' 10" (4.98m x 6.65m)

Integrated washing machine, dryer, fridge freezer and dishwasher.

Bedroom One

15' x 9' 9" (4.57m x 2.97m)

Bedroom Two

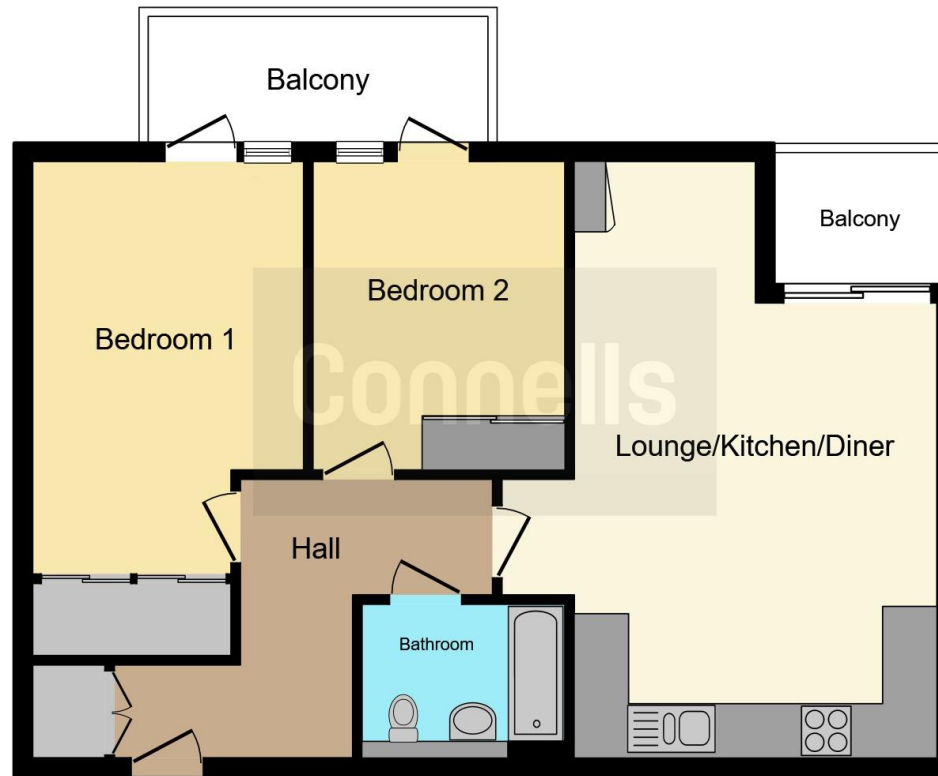
11' 2" x 9' 1" (3.40m x 2.77m)

Bathroom









This floor plan is for illustrative purposes only. It is not drawn to scale. Any measurements, floor areas (including any total floor area), openings and orientation are approximate. No details are guaranteed, they cannot be relied upon for any purpose and they do not form part of any agreement. No liability is taken for any error, omission or misstatement. A party must rely upon its own inspection(s). Powered by www.focalagent.com

To view this property please contact Connells on

T 01227 764 720
E canterbury@connells.co.uk

29-30 Watling Street
CANTERBURY CT1 2UD

EPC Rating: B

Tenure: Leasehold

[check out more properties at connells.co.uk](http://connells.co.uk)

This is a Leasehold property. We are awaiting further details about the Term of the lease. For further information please contact the branch. Please note additional fees could be incurred for items such as Leasehold packs.



1. MONEY LAUNDERING REGULATIONS Intending purchasers will be asked to produce identification documentation at a later stage and we would ask for your co-operation in order that there will be no delay in agreeing the sale. 2. These particulars do not constitute part or all of an offer or contract. 3. The measurements indicated are supplied for guidance only and as such must be considered incorrect. Potential buyers are advised to recheck measurements before committing to any expense. 4. We have not tested any apparatus, equipment, fixtures, fittings or services and it is in the buyers interest to check the working condition of any appliances.

Connells Residential is registered in England and Wales under company number 1489613, Registered Office is Cumbria House, 16-20 Hockliffe Street, Leighton Buzzard, Bedfordshire, LU7 1GN. VAT Registration Number is 500 2481 05.

See all our properties at www.connells.co.uk | www.rightmove.co.uk | www.zoopla.co.uk

Property Ref: CBY406159 - 0005