



Connells

Deansway Avenue
Sturry Canterbury



Property Description

Deansway Avenue is a charming residential property located in the village of Sturry, just outside Canterbury. This inviting home boasts a spacious layout, offering three well-appointed bedrooms, a cozy living room, and a modern kitchen that flows into a bright dining area and conservatory.

The property features large windows that flood the space with natural light, enhancing its warm and welcoming atmosphere. Outside, a beautifully maintained garden provides an ideal setting for outdoor entertaining or relaxation, featuring outhouse and shed, while a private driveway offers convenient parking.

Sturry's local amenities, including shops, schools, and parks, are within easy reach, and excellent transport links ensure a quick commute to the historic city of Canterbury. This delightful home perfectly combines comfort, convenience, and community, making it an ideal choice for families or professionals seeking a tranquil lifestyle while remaining close to city amenities.

Entrance Hall

10' 8" x 5' 4" (3.25m x 1.63m)

Lounge

10' 8" x 10' 7" (3.25m x 3.23m)

Kitchen

10' 9" x 15' 6" (3.28m x 4.72m)

Conservatory

15' 2" x 11' 5" (4.62m x 3.48m)

Bedroom One

9' 5" x 11' 1" (2.87m x 3.38m)

Bedroom Two

9' 6" x 10' 7" (2.90m x 3.23m)

Bathroom

7' 5" x 6' 6" (2.26m x 1.98m)

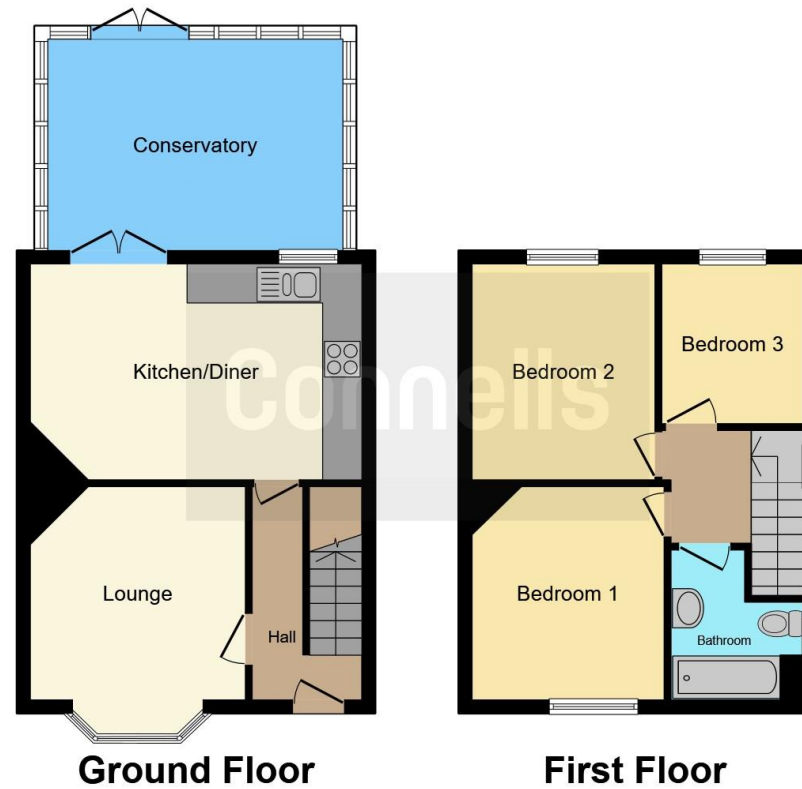
Outbuildings

23' 3" x 8' 6" (7.09m x 2.59m)









This floor plan is for illustrative purposes only. It is not drawn to scale. Any measurements, floor areas (including any total floor area), openings and orientation are approximate. No details are guaranteed, they cannot be relied upon for any purpose and they do not form part of any agreement. No liability is taken for any error, omission or misstatement. A party must rely upon its own inspection(s). Powered by www.focalagent.com

To view this property please contact Connells on

T 01227 764 720
E canterbury@connells.co.uk

29-30 Watling Street
 CANTERBURY CT1 2UD

EPC Rating: D

Tenure: Freehold

view this property online connells.co.uk/Property/ASH407530



1. MONEY LAUNDERING REGULATIONS Intending purchasers will be asked to produce identification documentation at a later stage and we would ask for your co-operation in order that there will be no delay in agreeing the sale. 2. These particulars do not constitute part or all of an offer or contract. 3. The measurements indicated are supplied for guidance only and as such must be considered incorrect. Potential buyers are advised to recheck measurements before committing to any expense. 4. We have not tested any apparatus, equipment, fixtures, fittings or services and it is in the buyers interest to check the working condition of any appliances.

Connells Residential is registered in England and Wales under company number 1489613, Registered Office is Cumbria House, 16-20 Hockliffe Street, Leighton Buzzard, Bedfordshire, LU7 1GN. VAT Registration Number is 500 2481 05.

See all our properties at www.connells.co.uk | www.rightmove.co.uk | www.zoopla.co.uk

Property Ref: ASH407530 - 0006