



Connells

Knole Grove  
East Grinstead



# Knole Grove East Grinstead RH19 2AL

for sale guide price  
**£475,000**



## Property Description

A beautifully presented four-bedroom semi-detached family home, located in the highly sought-after Knole Grove, East Grinstead - offering spacious living, modern finishes, and a quiet cul-de-sac setting.

This delightful property offers the perfect blend of contemporary style and comfortable family living. On the ground floor, you'll find a bright and airy open-plan lounge and dining area with patio doors leading out to a private rear garden, ideal for entertaining or relaxing in the sun. The modern kitchen features integrated appliances, ample storage, and sleek work tops.

Upstairs, the home benefits from four generous bedrooms, including a spacious principal bedroom with fitted wardrobes. The remaining bedrooms are well-proportioned and served by a stylish family bathroom.

Further highlights include a downstairs WC, off-road parking, outhouse.

Located within walking distance of local schools, country walks, and East Grinstead's vibrant town centre, this is an ideal home for families looking to settle in a peaceful yet well-connected location.

## Lounge

22' 1" x 11' 3" ( 6.73m x 3.43m )

## Kitchen/Diner

16' 4" x 10' 4" ( 4.98m x 3.15m )

## Bedroom 1 - Top Floor

15' 8" x 10' ( 4.78m x 3.05m )

## En Suite

## Bedroom 2 - First Floor

11' 8" x 8' 9" ( 3.56m x 2.67m )

## Bedroom 3 - First Floor

9' 8" x 13' 2" ( 2.95m x 4.01m )

## Bedroom 4 - First Floor

7' 4" x 7' 4" ( 2.24m x 2.24m )

## Family Bathroom

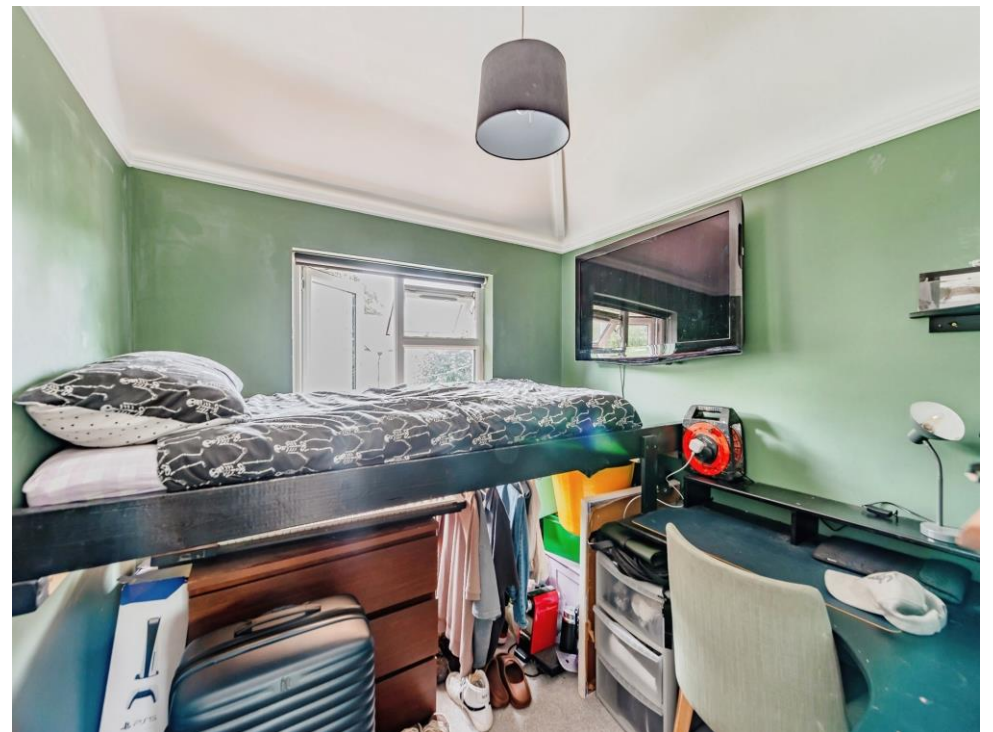
## Front & Rear Garden

## Outhouse

## Driveway

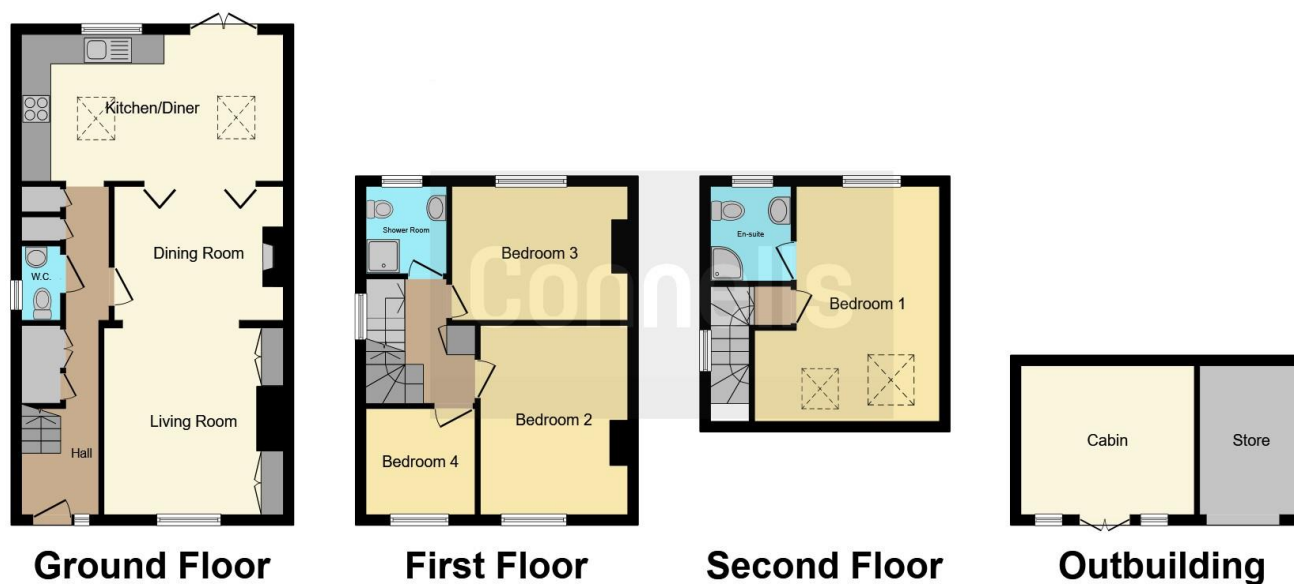












This floor plan is for illustrative purposes only. It is not drawn to scale. Any measurements, floor areas (including any total floor area), openings and orientation are approximate. No details are guaranteed, they cannot be relied upon for any purpose and they do not form part of any agreement. No liability is taken for any error, omission or misstatement. A party must rely upon its own inspection(s). Powered by [www.focalagent.com](http://www.focalagent.com)

To view this property please contact Connells on

**T 01342 325 911**  
**E [eastgrinstead@connells.co.uk](mailto:eastgrinstead@connells.co.uk)**

90 London Road  
 EAST GRINSTEAD RH19 1EP

EPC Rating: D Council Tax  
 Band: D

Tenure: Freehold

**view this property online [connells.co.uk/Property/EGR405168](http://connells.co.uk/Property/EGR405168)**



1. MONEY LAUNDERING REGULATIONS Intending purchasers will be asked to produce identification documentation at a later stage and we would ask for your co-operation in order that there will be no delay in agreeing the sale. 2. These particulars do not constitute part or all of an offer or contract. 3. The measurements indicated are supplied for guidance only and as such must be considered incorrect. Potential buyers are advised to recheck measurements before committing to any expense. 4. We have not tested any apparatus, equipment, fixtures, fittings or services and it is in the buyers interest to check the working condition of any appliances.

Connells Residential is registered in England and Wales under company number 1489613, Registered Office is Cumbria House, 16-20 Hockliffe Street, Leighton Buzzard, Bedfordshire, LU7 1GN. VAT Registration Number is 500 2481 05.

**See all our properties at [www.connells.co.uk](http://www.connells.co.uk) | [www.rightmove.co.uk](http://www.rightmove.co.uk) | [www.zoopla.co.uk](http://www.zoopla.co.uk)**

Property Ref: EGR405168 - 0005