



Connells

Huntsland Lodge Turners Hill Road
Crawley Down

Huntsland Lodge Turners Hill Road Crawley Down RH10 4HB

for sale guide price
£625,000-£650,000



Property Description

Stunning tile-hung, four-bedroom semi-detached home arranged over three floors, offering approximately 1,557 sq ft of beautifully presented accommodation. Ideally positioned on the cusp of Crawley Down and surrounded by open countryside, this impressive home combines modern living within a semi-rural location. The ground floor features a high specification kitchen/diner with integrated appliances and striking bi-folding doors opening onto the rear garden, creating an excellent space for everyday living and entertaining. There is also a spacious living room with a stunning brick feature fireplace, a welcoming entrance hall, and a ground floor cloakroom. The ground floor further benefits from thermostatically controlled underfloor heating.

The first floor offers three well-proportioned bedrooms, including one with an en-suite shower room, along with a large family bathroom complete with separate bath and shower cubicle. The second floor is dedicated to the impressive principal bedroom which, benefits from built-in-wardrobes, eaves storage, and a private en-suite. Externally the property boasts driveway parking for three cars and a beautifully landscaped rear garden, featuring a timber pergola and outdoor lighting-perfect for relaxing in an atmospheric space. Additional benefits include solar panels and the remainder of the BLP warranty.

This is a modern classic home, perfectly positioned for easy access to village amenities while enjoying the charm and village lifestyle.

Entrance Hall

Cloakroom

Lounge

13' 7" x 12' 4" (4.14m x 3.76m)

Kitchen/Diner

20' 2" x 14' 1" (6.15m x 4.29m)

First Floor

Landing

Bedroom Two

14' 1" x 10' (4.29m x 3.05m)

Bedroom Three

10' x 9' 10" (3.05m x 3.00m)

Bedroom Four

10' 6" x 9' 10" (3.20m x 3.00m)

Bathroom

Second Floor

Landing

Bedroom One

14' 4" x 13' 1" (4.37m x 3.99m)

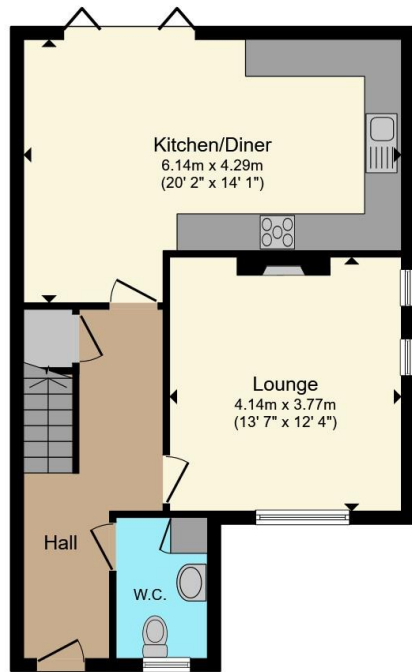
Front Garden

Rear Garden

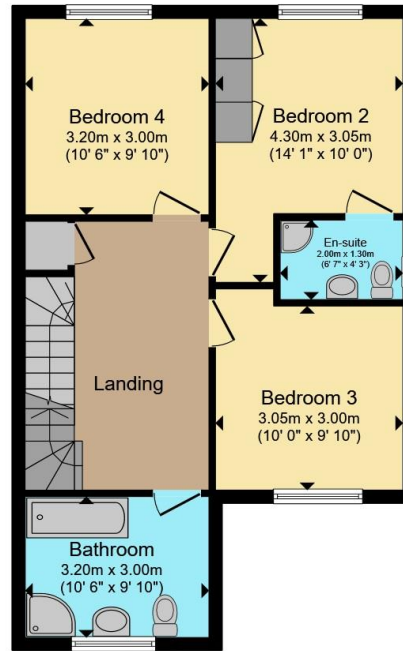








Ground Floor



First Floor



Second Floor

Total floor area 134.6 m² (1,449 sq.ft.) approx

This floor plan is for illustrative purposes only. It is not drawn to scale. Any measurements, floor areas (including any total floor area), openings and orientation are approximate. No details are guaranteed, they cannot be relied upon for any purpose and they do not form part of any agreement. No liability is taken for any error, omission or misstatement. A party must rely upon its own inspection(s). Powered by www.propertybox.io

Connells

To view this property please contact Connells on

T 01342 717 727
E copthorne@connells.co.uk

4 Copthorne Bank
COPTHORNE RH10 3QX

EPC Rating: A Council Tax
Band: B

Tenure: Freehold

view this property online connells.co.uk/Property/COP404327



1. MONEY LAUNDERING REGULATIONS Intending purchasers will be asked to produce identification documentation at a later stage and we would ask for your co-operation in order that there will be no delay in agreeing the sale. 2. These particulars do not constitute part or all of an offer or contract. 3. The measurements indicated are supplied for guidance only and as such must be considered incorrect. Potential buyers are advised to recheck measurements before committing to any expense. 4. We have not tested any apparatus, equipment, fixtures, fittings or services and it is in the buyers interest to check the working condition of any appliances.

Connells Residential is registered in England and Wales under company number 1489613, Registered Office is Cumbria House, 16-20 Hockliffe Street, Leighton Buzzard, Bedfordshire, LU7 1GN. VAT Registration Number is 500 2481 05.

See all our properties at www.connells.co.uk | www.rightmove.co.uk | www.zoopla.co.uk

Property Ref: COP404327 - 0005