



**Connells**

Halley Road  
Broad Oak Heathfield



## Property Description

Are you looking for a family home to move straight into? This home really needs to be at the top of your list.

Boasting fantastic living accommodation and bedroom sizes, the house is also flooded with natural light throughout thanks to large windows to the front and rear. This house we feel would certainly suit a family looking for their forever home.

The accommodation comprises of, Entrance Porch, Spacious Entrance Hall, Cloakroom, Impressive Lounge with large window to the front to enjoy the view and a working log burning stove. The Lounge then opens onto a Formal Dining area. The Kitchen is fully fitted with a range of wall and base units, quartz worktops and rangemaster cooker. Further on, you'll find a handy breakfast room come utility space which offers internal access into the Garage.

Upstairs, the landing enjoys a long large window which really does show off the fantastic view over the farmland. Bedrooms One and Bedroom Two are both comfortable double bedrooms, Bedroom Three is a double bedroom and Bedroom four makes the ideal nursery or study.

The Family bathroom is well appointed with a modern suite. Outside, the garden enjoys a patio area and a raised area of lawn with mature flower beds and hedge borders. The front of the house has off road parking and an area of lawn. There is a single garage.

Viewing this home is highly recommended to fully appreciate what is on offer.

**Entrance Porch**

**Entrance Hall**

**Cloakroom**

**Lounge**

15' 10" x 13' 9" ( 4.83m x 4.19m )

**Dining Room**

11' 10" x 9' 9" ( 3.61m x 2.97m )

**Kitchen**

14' 8" x 9' 9" ( 4.47m x 2.97m )

**Breakfast Utility Room**

14' 10" x 9' 11" ( 4.52m x 3.02m )

**Bedroom One**

15' 10" x 11' 1" ( 4.83m x 3.38m )

**Bedroom Two**

11' 11" x 9' 8" ( 3.63m x 2.95m )

**Bedroom Three**

12' 3" x 8' 6" ( 3.73m x 2.59m )

**Bedroom Four**

11' 7" x 6' 6" ( 3.53m x 1.98m )

**Family Bathroom**

**Rear Garden**

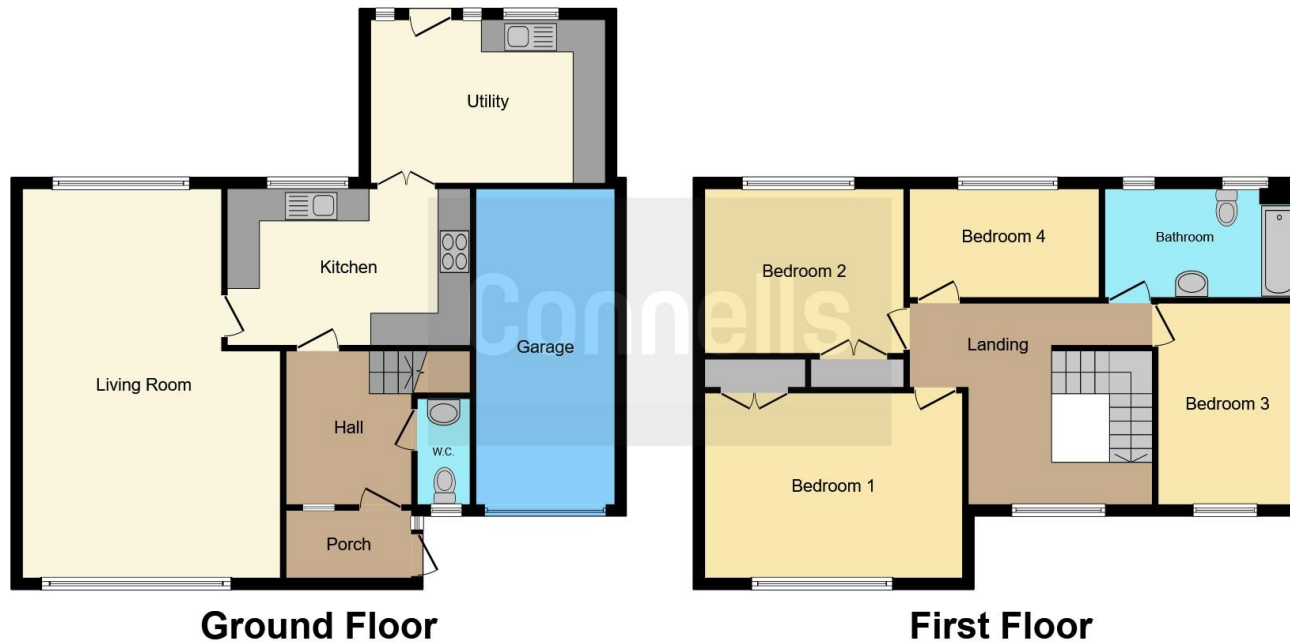
**Front Garden**

**Garage**









This floor plan is for illustrative purposes only. It is not drawn to scale. Any measurements, floor areas (including any total floor area), openings and orientation are approximate. No details are guaranteed, they cannot be relied upon for any purpose and they do not form part of any agreement. No liability is taken for any error, omission or misstatement. A party must rely upon its own inspection(s). Powered by [www.focalagent.com](http://www.focalagent.com)

To view this property please contact Connells on

**T 01892 547 966**  
**E [tunbridgewells@connells.co.uk](mailto:tunbridgewells@connells.co.uk)**

5 Vale Road  
 TUNBRIDGE WELLS TN1 1BS

**EPC Rating: C**

Tenure: Freehold

**view this property online [connells.co.uk/Property/TWL405130](http://connells.co.uk/Property/TWL405130)**



1. MONEY LAUNDERING REGULATIONS Intending purchasers will be asked to produce identification documentation at a later stage and we would ask for your co-operation in order that there will be no delay in agreeing the sale. 2. These particulars do not constitute part or all of an offer or contract. 3. The measurements indicated are supplied for guidance only and as such must be considered incorrect. Potential buyers are advised to recheck measurements before committing to any expense. 4. We have not tested any apparatus, equipment, fixtures, fittings or services and it is in the buyers interest to check the working condition of any appliances.

Connells Residential is registered in England and Wales under company number 1489613, Registered Office is Cumbria House, 16-20 Hockliffe Street, Leighton Buzzard, Bedfordshire, LU7 1GN. VAT Registration Number is 500 2481 05.

**See all our properties at [www.connells.co.uk](http://www.connells.co.uk) | [www.rightmove.co.uk](http://www.rightmove.co.uk) | [www.zoopla.co.uk](http://www.zoopla.co.uk)**

Property Ref: TWL405130 - 0003