



Connells

Rosewood
Langley Maidstone



Property Description

A beautifully presented two-bedroom apartment situated in the desirable village of Langley, just a short drive from Maidstone town centre. This modern home offers an ideal combination of comfort and convenience, making it a fantastic choice for professionals, first-time buyers, or those seeking a smart investment opportunity.

The apartment boasts a bright and airy open-plan living space, complemented by a contemporary kitchen with integrated appliances. Two well-proportioned bedrooms provide flexibility for guests, a home office, or family living, while the stylish bathroom is finished to a high standard.

Additional benefits include secure entry, allocated parking, and well-maintained communal areas.

Located within easy reach of local amenities, schools, and excellent transport links, this property combines village charm with superb connectivity. Whether you're looking for a stylish home or a lucrative rental investment, this charming apartment at Rosewood ticks all the boxes.



Entrance Hall

Lounge/Diner/Kitchen Area

Balcony

Bedroom One

En Suite

Bedroom Two

Bathroom

Parking

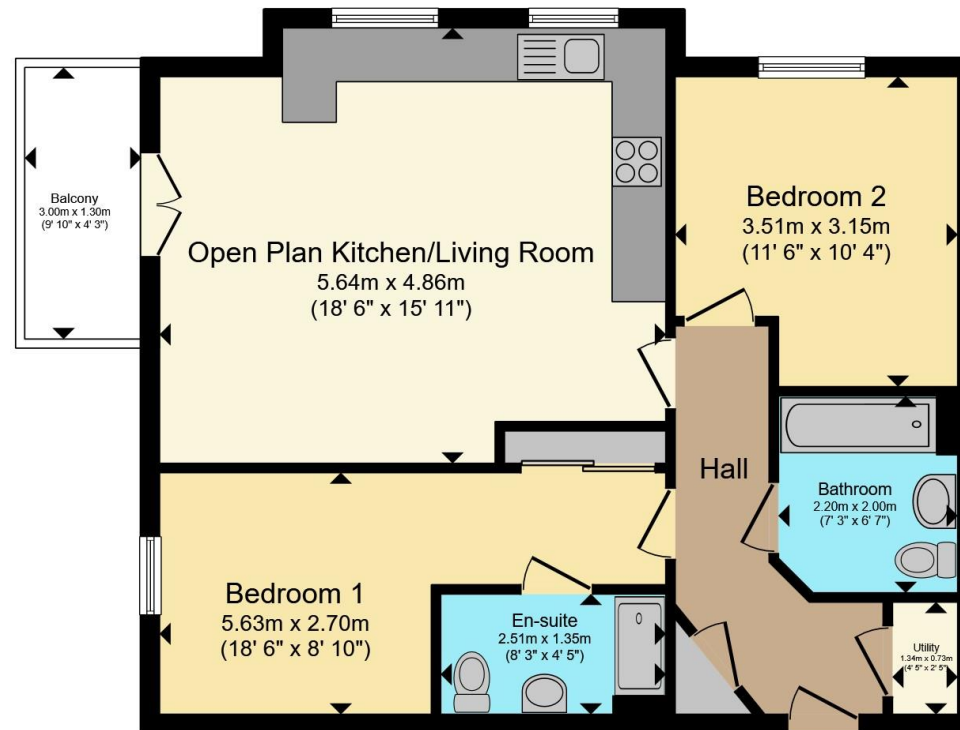
Agents Note

Please be aware that the information we have about this property is limited. If there is any point which is of particular importance to you, please contact the branch and we will endeavour to check for you, especially if you are contemplating travelling some distance to view the property









Total floor area 65.6 m² (706 sq.ft.) approx

This floor plan is for illustrative purposes only. It is not drawn to scale. Any measurements, floor areas (including any total floor area), openings and orientation are approximate. No details are guaranteed, they cannot be relied upon for any purpose and they do not form part of any agreement. No liability is taken for any error, omission or misstatement. A party must rely upon its own inspection(s). Powered by www.propertybox.io

Connells

To view this property please contact Connells on

T 01622 751034

E maidstone@connells.co.uk

30 King Street
MAIDSTONE ME14 1BS

EPC Rating: B

Council Tax
Band: C

Service Charge: Ask
Agent

Ground Rent:
Ask Agent

Tenure: Leasehold

view this property online connells.co.uk/Property/MAI408478

This is a Leasehold property. We are awaiting further details about the Term of the lease. For further information please contact the branch. Please note additional fees could be incurred for items such as Leasehold packs.



1. MONEY LAUNDERING REGULATIONS Intending purchasers will be asked to produce identification documentation at a later stage and we would ask for your co-operation in order that there will be no delay in agreeing the sale. 2. These particulars do not constitute part or all of an offer or contract. 3. The measurements indicated are supplied for guidance only and as such must be considered incorrect. Potential buyers are advised to recheck measurements before committing to any expense. 4. We have not tested any apparatus, equipment, fixtures, fittings or services and it is in the buyers interest to check the working condition of any appliances.

Connells Residential is registered in England and Wales under company number 1489613, Registered Office is Cumbria House, 16-20 Hockliffe Street, Leighton Buzzard, Bedfordshire, LU7 1GN. VAT Registration Number is 500 2481 05.

See all our properties at www.connells.co.uk | www.rightmove.co.uk | www.zoopla.co.uk

Property Ref: MAI408478 - 0005