



**Connells**

Gleesk House Grecian Street  
Maidstone

# Gleesk House Grecian Street Maidstone ME14 2TS

for sale  
**£130,000**



## Property Description

This beautifully presented ground floor apartment is located in the sought-after Gleesk House, a characterful period building in the heart of Maidstone. Offering a stylish and modern interior with its own private entrance and outdoor space, Flat 1 is perfect for first-time buyers, downsizers, or investors looking for a high-yield opportunity in a prime location.

### Local Area Highlights:

Grecian Street is a quiet residential road just moments from Maidstone's vibrant town centre. Residents enjoy:

**Retail & Leisure:** Fremlin Walk shopping centre, cafés, pubs, and gyms are all nearby.

**Green Spaces:** Brenchley Gardens and Whatman Park offer scenic walks and outdoor activities.

**Healthcare Access:** Close to GP surgeries, pharmacies, and private clinics.

**Education:** Within reach of reputable schools and colleges.

**Community & Safety:** Low crime rates and a strong sense of community make this a desirable area to live.



## Ground Floor

### Entrance Hall

### Bedroom One

11' 5" x 8' 2" ( 3.48m x 2.49m )

### En Suite

### Bedroom Two

9' 4" x 6' 1" ( 2.84m x 1.85m )

### Toilet

### Basement

### Lounge

10' Max x 15' 5" Max ( 3.05m Max x 4.70m Max )

### Kitchen

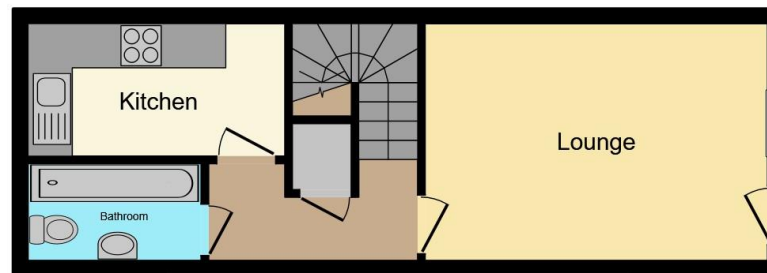
9' 5" x 5' 7" Max ( 2.87m x 1.70m Max )

### Bathroom

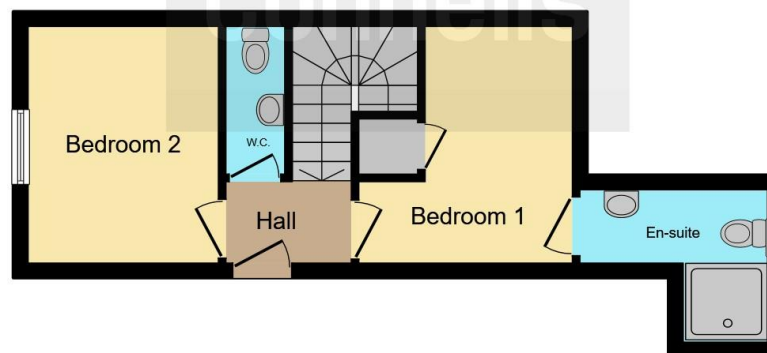








**Basement**



**Ground Floor**

This floor plan is for illustrative purposes only. It is not drawn to scale. Any measurements, floor areas (including any total floor area), openings and orientation are approximate. No details are guaranteed, they cannot be relied upon for any purpose and they do not form part of any agreement. No liability is taken for any error, omission or misstatement. A party must rely upon its own inspection(s). Powered by [www.focalagent.com](http://www.focalagent.com)

To view this property please contact Connells on

**T 01622 751034**  
**E [maidstone@connells.co.uk](mailto:maidstone@connells.co.uk)**

30 King Street  
 MAIDSTONE ME14 1BS

EPC Rating: C    Council Tax  
 Band: C

Service Charge: Ask  
 Agent

Ground Rent:  
 200.00

Tenure: Leasehold

**view this property online [connells.co.uk/Property/MAI408341](http://connells.co.uk/Property/MAI408341)**

This is a Leasehold property with details as follows; Term of Lease 99 years from 01 Jan 2010. Should you require further information please contact the branch. Please Note additional fees could be incurred for items such as

1. MONEY LAUNDERING REGULATIONS Intending purchasers will be asked to produce identification documentation at a later stage and we would ask for your co-operation in order that there will be no delay in agreeing the sale. 2. These particulars do not constitute part or all of an offer or contract. 3. The measurements indicated are supplied for guidance only and as such must be considered incorrect. Potential buyers are advised to recheck measurements before committing to any expense. 4. We have not tested any apparatus, equipment, fixtures, fittings or services and it is in the buyers interest to check the working condition of any appliances.

Connells Residential is registered in England and Wales under company number 1489613, Registered Office is Cumbria House, 16-20 Hockliffe Street, Leighton Buzzard, Bedfordshire, LU7 1GN. VAT Registration Number is 500 2481 05.



**See all our properties at [www.connells.co.uk](http://www.connells.co.uk) | [www.rightmove.co.uk](http://www.rightmove.co.uk) | [www.zoopla.co.uk](http://www.zoopla.co.uk)**

Property Ref: MAI408341 - 0006